



iASL: ACPI Source Language Optimizing Compiler and Disassembler

User Guide

iASL Overview and Compiler Operation

Revision 6.3

September 14, 2021





Information in this document is provided in connection with Intel® products. No license, express or implied, by estoppel or otherwise, to any intellectual property rights is granted by this document with the sole exceptions that a) you may republish an unmodified copy and b) code included in this document is licensed subject to Zero-Clause BSD open source license (0BSD). You may create software implementations based on this document and in compliance with the foregoing. No rights are granted to create modifications or derivatives of this document.

Except as provided in Intel's Terms and Conditions of Sale for such products, Intel assumes no liability whatsoever, and Intel disclaims any express or implied warranty, relating to sale and/or use of Intel products including liability or warranties relating to fitness for a particular purpose, merchantability, or infringement of any patent, copyright, or other intellectual property right. Intel products are not intended for use in medical, life saving, or life sustaining applications.

Intel may make changes to specifications and product descriptions at any time, without notice.

Designers must not rely on the absence or characteristics of any features or instructions marked "reserved" or "undefined." Intel reserves these for future definition and shall have no responsibility whatsoever for conflicts or incompatibilities arising from future changes to them.

The iASL compiler may contain design defects or errors known as errata which may cause the product to deviate from published specifications. Current characterized errata are available on request.

Copyright © 2000 - 2021 Intel Corporation

*Other brands and names are the property of their respective owners.



Contents

1	Introduction -----	6
1.1	Document Structure	7
1.2	Reference Documents	7
1.3	Document History.....	8
1.4	Definition of Terms.....	9
2	Compiler/Disassembler Overview-----	10
2.1	Supported Execution Environments.....	10
2.2	ASL Compiler	10
2.2.1	Input Files.....	10
2.2.2	Output File Options	10
2.3	AML Disassembler.....	11
2.3.1	Input Files.....	11
2.3.2	Output	11
2.4	Data Table Compiler	11
2.4.1	Input Files.....	12
2.4.2	Output	12
2.5	Data Table Disassembler.....	12
2.5.1	Input Files.....	12
2.5.2	Output	12
2.6	Template Generator.....	12
3	Preprocessor -----	13
3.1	Command Line Options	13
3.2	Integer Expressions	13
3.3	Supported Directives.....	13
3.3.1	Text Substitution and Macros	14
3.3.1.1	#define.....	14
3.3.1.2	#undef	14
3.3.2	Conditional Compilation	14
3.3.2.1	#if -	14
3.3.2.2	#ifdef.....	14
3.3.2.3	#ifndef.....	15
3.3.2.4	#else.....	15
3.3.2.5	#elif.....	15
3.3.2.6	#endif.....	15
3.3.3	Include Files.....	15
3.3.3.1	#include vs. ASL Include()	15
3.3.3.2	#include	15
3.3.3.3	#includebuffer.....	16
3.3.3.4	#line.....	16
3.3.4	Miscellaneous Directives	16
3.3.4.1	#error.....	16
3.3.4.2	#pragma	16
3.3.4.3	#warning.....	17
4	ASL-AML Subsystem-----	18
4.1	ASL Compiler	18
4.1.1	Support for Symbolic Operators and Expressions (ASL+)	18



4.1.1.1	Binary AML Considerations	20
4.1.1.2	AML Disassembler Notes.....	20
4.1.2	Built-in ASL Macros	21
4.1.3	Compiler Analysis Phases	21
4.1.3.1	General ASL Syntax Analysis	21
4.1.3.2	General Semantic Analysis.....	21
4.1.3.3	Control Method Semantic Analysis	22
4.1.3.4	Control Method Invocation Analysis.....	22
4.1.3.5	Predefined ACPI Names	22
4.1.3.6	Resource Descriptors.....	22
4.1.4	Compiler Optimizations.....	23
4.1.4.1	Named References	23
4.1.4.2	Integers	23
4.1.4.3	Constant Folding.....	23
4.2	ASL-to-AML Disassembler.....	23
4.2.1	Multiple Table Disassembly	23
4.2.2	External Declarations.....	24
4.2.2.1	The External AML Opcode.....	24
4.2.2.2	Generation of ASL External() Statements.....	25
4.3	ASL to ASL+ Converter.....	25
4.3.1	Using the ASL/ASL+ Converter	25
4.3.2	Example: ASL/ASL+ Converter and Disassembler	25
4.3.3	Items currently not supported	26
5	ACPI Data Table Subsystem	27
5.1	Data Table Compiler	27
5.1.1	Input Format.....	27
5.1.1.1	Ignored Fields/Comments.....	28
5.1.2	Data Table Definition Language	28
5.1.3	Input Example	30
5.1.4	Data Types for User-Entered Fields	30
5.1.4.1	Integers	30
5.1.4.2	Integer Expressions	30
5.1.4.3	Flags.....	31
5.1.4.4	Strings	31
5.1.4.5	Buffers	32
5.1.5	Fields Set Automatically.....	32
5.1.6	Special Fields.....	32
5.1.7	Generic Fields / Generic Data Types.....	33
5.2	Data Table Disassembler.....	35
5.2.1	Example Output	35
5.3	ACPI Table Template Generator	38
6	Compiler/Disassembler Operation	39
6.1	Command Line Invocation	39
6.2	Wildcard Support.....	39
6.3	Command Line Options	40
6.3.1	General Options	41
6.3.2	Help.....	42
6.3.3	Preprocessor.....	42
6.3.4	Errors, Warnings, and Remarks.....	42
6.3.5	AML Bytecode Generation.....	43
6.3.6	Listings	43
6.3.7	Firmware Support – C Text Output.....	43
6.3.8	Firmware Support – Assembler Text Output	44



6.3.9	Firmware Support – ASL Text Output.....	44
6.3.10	Legacy-ASL to ASL+ Converter.....	44
6.3.11	Data Table Compiler.....	44
6.3.12	AML Disassembler.....	45
6.3.13	Compiler Debug Options.....	45
6.4	Compiler Output Examples.....	46
6.4.1	Input ASL.....	46
6.4.2	Output of –tc (make C hex table) Option.....	47
6.4.3	Output of –sc (make C source) Option.....	48
6.4.4	Output of –ic (make include file) Option.....	49
6.4.5	Output of –l (Listing) Option.....	49
6.4.6	Output of –lm (Hardware Mapfile) Option.....	50
6.4.7	Output of –ln (Namespace Listing) Option.....	51
6.5	Using the Disassembler.....	51
6.5.1	Resolving External Control Methods.....	51
6.5.1.1	Standard Disassembly.....	52
6.5.1.2	Disassembly with –e option.....	53
6.5.1.3	Disassembly with both –e and –fe options.....	53
6.6	Integration Into MS VC++ Environment.....	54
6.6.1	Integration as a Custom Tool.....	54
6.6.2	Integration into a Project Build.....	55
7	Generating iASL from Source Code-----	56
7.1	Required Tools.....	56
7.2	Required Source Code.....	56



1 Introduction

The iASL compiler/disassembler is a fully-featured translator for the ACPI Source Language (ASL) and ACPI binary data tables. As part of the Intel ACPI Component Architecture, the Intel ASL compiler implements translation for the ACPI Source Language (ASL) to the ACPI Machine Language (AML). The disassembler feature will disassemble compiled AML code back to (near-original) ASL source code.

The major features of the iASL compiler include:

- Full support for the ACPI 5.1 Specification including ASL grammar elements and operators.
- Extensive compiler syntax and semantic error checking, especially in the area of control methods. This reduces the number of errors that are not discovered until the AML code is actually interpreted (i.e., the compile-time error checking reduces the number of run-time errors.)
- An integrated preprocessor provides C-compatible preprocessor directives and conditional compilation directives such as `#define`, `#if`, `#ifdef`, `#else`, etc.
- Multiple types of output files. Besides binary ACPI tables, output options include formatted listing files with intermixed source, several types of AML files, and error messages.
- Automatic detection and compilation of either ASL source code or ACPI data table source code.
- Portable code (ANSI C) and source code availability allows the compiler to be easily ported and run on multiple execution platforms.
- Support for integration with the Microsoft Visual C++ (or similar) development environments.
- Disassembly of all ACPI tables, including tables that contain AML (DSDT, SSDT) as well as ACPI “data” tables such as the FADT, MADT, SRAT, etc.
- Support for compilation of non-AML data tables such as the FADT, MADT, SRAT, etc.
- Support for ASL language extensions that support symbolic math/logical operators and expressions.



1.1 Document Structure

This document consists of these major sections:

Introduction: Contains a brief overview of the iASL compiler/disassembler, document structure, related reference documents, and definition of terms used throughout the document

Compile/Disassembler Overview: Compiler subsystems, inputs, outputs, and supported system environments.

ASL-AML Subsystem: Describes the ASL compiler and the AML disassembler.

ACPI Data Table Subsystem: Describes the Data Table compiler and the Data Table disassembler.

Compiler/Disassembler Operation: Guide for compiler options and general operation, including output examples.

Generating iASL from Source Code: Instructions for building the iASL compiler from the open-source package.

1.2 Reference Documents

ACPI documents are available at:

<http://uefi.org/specifications/>

Advanced Configuration and Power Interface Specification, Revision 1.0, December 1, 1996

Advanced Configuration and Power Interface Specification, Revision 1.0a, July 1, 1998

Advanced Configuration and Power Interface Specification, Revision 1.0b, February 8, 1999

Advanced Configuration and Power Interface Specification, Revision 2.0, July 27, 2000

Advanced Configuration and Power Interface Specification, Revision 2.0a, March 32, 2002

Advanced Configuration and Power Interface Specification, Revision 2.0b, October 11, 2002

Advanced Configuration and Power Interface Specification, Revision 2.0c, August 23, 2003

Advanced Configuration and Power Interface Specification, Revision 3.0, September 2, 2004

Advanced Configuration and Power Interface Specification, Revision 3.0a, December 30, 2005

Advanced Configuration and Power Interface Specification, Revision 3.0b, October 10, 2006

Advanced Configuration and Power Interface Specification, Revision 4.0, June 16, 2009

Advanced Configuration and Power Interface Specification, Revision 4.0a, April 5, 2010

Advanced Configuration and Power Interface Specification, Revision 5.0, December, 6, 2011

Advanced Configuration and Power Interface Specification, Revision 5.0a, November, 13, 2013

Advanced Configuration and Power Interface Specification, Revision 5.1, July 2014

Advanced Configuration and Power Interface Specification, Revision 6.0, April 2015

Advanced Configuration and Power Interface Specification, Revision 6.1, January 2016



ACPICA documents are available at:
<https://www.acpica.org/documentation/>

ACPI Component Architecture User Guide and Programmer Reference
iASL: ACPI Source Language Optimizing Compiler and Disassembler User Guide

ACPICA and iASL source code is available at:
<https://www.acpica.org/downloads/>

iASL Windows binaries are available at:
<https://www.acpica.org/downloads/binary-tools>

1.3 Document History

May 2012: Add preprocessor support.

June 2012: Update command line options and descriptions.

January 2013: Add `-in` flag to ignore ASL/AML NoOp operators/opcodes.

August 2013: Add `-fe` option for the disassembler.

December 2013: Add `-ve` option to display compilation errors only, no warnings or remarks.

September 2014: Add `-lm` option to generate a hardware mapfile.

November 2014: Add support for C-style math/logical operators and expressions. Added new debug option to prune ASL namespace hierarchy tree.

May 2015: Add the `#includebuffer` preprocessor directive.

May 2016: Add support for ASL-to-ASL+ converter.



1.4 Definition of Terms

ACPI: Advanced Configuration and Power Interface. An open standard for device configuration and power management.

ACPICA: ACPI Component Architecture. An open-source implementation of ACPI that is hosted on many different operating systems.

ACPI Data Table: Any ACPI table that does not contain AML byte code but is instead simply a structure of static packed binary data. In practice, any ACPI table other than DSDTs or SSDTs.

ACPI Table: Generic reference to any of the ACPI-related tables (both AML and Data Tables) that are presented by the BIOS for consumption by the host operating system.

AML: ACPI Machine Language. A byte code language to be executed by an ACPI/AML interpreter within the host operating system. Created by translation of ASL code via an ASL compiler. Defined by the ACPI specification.

ASL: ACPI Source Language. A higher level language that corresponds to the low level AML byte code language. ASL source code is translated into AML byte code by an ASL compiler. Defined by the ACPI specification

Binary ACPI Table: An ACPI table that contains either raw AML byte code, or a packed ACPI Data Table

Data Table Language: A simple language developed to describe the individual fields within an ACPI Data Table. It is used by both the compiler and disassembler portions of the iASL Data Table Subsystem.

Disassembler: In the ACPI context, a tool that will either convert AML byte code back to the original ASL code, or will convert an ACPI Data Table into a format that is human-readable.

Hex Table: A table containing data that is in a format suitable for translation via an Assembler, C compiler, or ASL compiler.



2 Compiler/Disassembler Overview

The iASL compiler/disassembler consists of several distinct subsystems, as described below:

- An integrated C-like preprocessor
- An ASL-to-AML compiler that translates ASL code (ACPI Source Language) to AML byte code (ACPI Machine Language).
- An ACPI Data Table compiler that translates Data Table definitions to binary ACPI tables. An ACPI Data Table is any ACPI table that contains only data, not AML byte code. Examples include the FADT, MADT, SRAT, etc.
- An AML-to-ASL disassembler that translates compiled AML byte code back to the (nearly) original ASL source code. This disassembler is used on tables like the DSDT and SSDT.
- An ACPI Data Table disassembler that formats binary ACPI data tables into a readable format. The output of this disassembler can be compiled with the ACPI data table compiler.
- An ACPI table template generator that will emit examples of all known ACPI tables, in a format similar to the output of the data table disassembler. The output files from the template generator are intended to be used as the basis or starting point for the development of actual ACPI tables.

2.1 Supported Execution Environments

iASL runs on multiple platforms as a 32-bit or 64-bit application.

Portable code – requires only ANSI C and a compiler generation package such as Bison/Flex or Yacc/Lex.

Error and warning messages are compatible with Microsoft Visual C++, allowing for integration of the compiler into the development environment to simplify project building and debug.

The iASL source code is distributed with the compiler binaries under the ACPICA source license.

2.2 ASL Compiler

2.2.1 Input Files

Existing ACPI ASL source files are fully supported. Enhanced compiler error checking will often uncover unknown problems in these files.

All ACPI 5.0 ASL additions and new ACPI tables are supported. The compiler fully supports ACPI 5.0.

2.2.2 Output File Options

- Preprocessed source code file



- AML binary output file
- AML code in C source code form for inclusion into a BIOS project
- AML code in x86 assembly code form for inclusion into a BIOS project
- AML Hex Table output file in either C, ASL, or x86 assembly code as a table initialization statement.
- Listing file with source file line number, source statements, and intermixed generated AML code. Include files named in the original source ASL file are expanded within the listing file
- Namespace output file — shows the ACPI namespace that corresponds to the input ASL file (and all include files.)
- Debug parse trace output file — gives a trace of the parser and namespace during the compile. Used to debug problems in the compiler, or to help add new compiler features.

2.3 AML Disassembler

The AML Disassembler has the capability of reverse translating any binary AML table back to nearly the original ASL code. These are typically DSDTs and SSDTs. It can also disassemble and format all other known non-AML data tables.

2.3.1 Input Files

The AML Disassembler accepts binary ACPI tables that contain valid AML code. These tables are the DSDT and any SSDTs.

These files may be obtained via the acpidump/acpixtract utilities, or some other host-specific tools.

2.3.2 Output

The output is disassembled (or de-compiled) ASL code. The file extension used for these output files is .DSL, meaning “disassembled ASL”. As opposed to original ASL source code files which typically have the extension .ASL.

2.4 Data Table Compiler

The Data Table compiler is used to compile the “non-ASL/AML” ACPI tables such as the FADT, MADT, SRAT, etc. These tables are not compiled to AML byte code, but are compiled to simple binary data, usually with the standard ACPI table header (signature, length, checksum, etc.)

The intent of the Data Table Compiler is to simplify the generation of the many non-ASL ACPI data tables and to make the generation process less error-prone. The Data Table Compiler knows the required format for each recognized ACPI table, as well as the exact size and allowable values for each field within the tables.



2.4.1 Input Files

The Data Table compiler accepts as input files that are in the same or simplified format as the files emitted by the data table disassembler. An existing ACPI binary data table may be disassembled, modified, and then recompiled.

Also, the ACPI table template generator may be used to generate template ACPI data tables that can in turn be used for the basis for additional table development. This would be the preferred starting point for ACPI table development, since the ACPI table templates contain a valid example of each table header, table section, and table sub-table as applicable.

2.4.2 Output

- Binary output file
- Hex Table output file in either C, ASL, or x86 assembly code as a table initialization statement for inclusion into a BIOS project.

2.5 Data Table Disassembler

This second part of the disassembler package will extract all data from a binary ACPI “data table” and format it into human readable form. The format of this output is compatible with the Data Table Compiler, meaning that such ACPI tables may be easily disassembled, modified, and recompiled.

2.5.1 Input Files

The Data Table Disassembler accepts binary ACPI tables that do not contain AML code. These tables include the FADT, MADT, SRAT, etc.

2.5.2 Output

The output is a disassembled and formatted ACPI table in human-readable format. The file extension used for these files is also .DSL, for consistency with the AML disassembler.

2.6 Template Generator

The iASL Template Generator can be used to create ACPI tables from templates that are stored within the iASL image. These templates can be used as a starting point for the development of any ACPI table known to the compiler.



3 Preprocessor

iASL contains an integrated preprocessor that is compatible with most C preprocessors, and implements a large subset of the standard C preprocessor directives

3.1 Command Line Options

These iASL command line options directly affect the operation of the preprocessor:

```
-D <symbol>      Define symbol for preprocessor use
-li             Create preprocessed output file (*.i)
-P             Preprocess only and create preprocessor output file (*.i)
-Pn            Disable preprocessor
```

3.2 Integer Expressions

Expressions are supported in all fields that require an integer value.

Supported operators (Standard C meanings, in precedence order):

```
!      Logical NOT
~      Bitwise ones compliment (NOT)
*      Multiply
/      Divide
%      Modulo
+      Add
-      Subtract
<<    Shift left
>>    Shift right
<      Less than
>      Greater than
<=    Less than or equal
>=    Greater than or equal
==    Equal
!=    Not Equal
&     Bitwise AND
^     bitwise Exclusive OR
|     Bitwise OR
&&   Logical AND
||    Logical OR
```

3.3 Supported Directives

The following directives are supported:

```
#define
#elif
#else
#endif
```



```
#error
#if
#ifdef
#ifndef
#include
#includeBuffer
#line
#pragma
#undef
#warning
```

3.3.1 Text Substitution and Macros

3.3.1.1 #define

Note: At this time, only text substitution #defines are supported. Full macros (with arguments) are not supported.

Usage:

```
#define name text_to_substitute
```

Every instance of “name” is replaced by “text_to_substitute”.

3.3.1.2 #undef

Usage:

```
#undef symbol
```

Removes a previously defined symbol, either from a #define or from the -D command line option.

3.3.2 Conditional Compilation

3.3.2.1 #if -

Usage:

```
#if expression
```

Conditionally compile a block of text. The block is included in the compilation if the expression evaluates to a non-zero value. The standard C operators (+,-,/,*,==, etc.) may be used within the expression.

3.3.2.2 #ifdef

Usage:

```
#ifdef symbol
```

Conditionally compile a block of text. The block is included in the compilation if the symbol is defined, either from a #define or from the -D command line option.



3.3.2.3 **#ifndef**

Usage:

#ifndef symbol

Conditionally compile a block of text. The block is included in the compilation if the symbol is *not* defined (opposite from `#ifdef`.)

3.3.2.4 **#else**

Usage:

#else

Conditionally compile a block of text. The block is included in the compilation if the result of a previous `#if`, `#ifdef`, `#ifndef`, or `#elif` was false.

3.3.2.5 **#elif**

Usage:

#elif expression

Combines `#else` and `#if` to conditionally compile a block of text.

3.3.2.6 **#endif**

Usage:

#endif

Indicates the completion of a `#if...#else` block.

3.3.3 **Include Files**

3.3.3.1 **#include vs. ASL Include()**

The `#include` is a preprocessor directive. The included file can contain additional preprocessor directives.

The ASL `Include()` operator includes a file during compile time, after the preprocessor has run. Therefore, it cannot contain any preprocessor directives.

3.3.3.2 **#include**

Usage:

#include "filename"

#include <filename>



Include an additional file for compilation. This file is subject to processing by the preprocessor, unlike the Include() ASL operator, which is only invoked after the preprocessor has completed operation.

3.3.3.3 **#includebuffer**

Usage:

```
#includebuffer "binary_filename" BufferName
```

```
#includebuffer <binary_filename> BufferName
```

Where *BufferName* is a standard ACPI NamePath. An ACPI buffer object is created with this name and the named object can be created anywhere within the ACPI namespace.

This directive allows for the inclusion of binary data into an ASL file. The binary data is converted into the ASL declaration of an ACPI Buffer object with the binary data as the buffer initialization data.

Since #includebuffer is not a standard C or ASL preprocessor directive, the directive can be bypassed during this early preprocessing via the __IASL__ predefined name:

```
#ifdef __IASL__  
#includebuffer ...  
#endif
```

3.3.3.4 **#line**

Usage:

```
#line value
```

Changes the internal line number that is used for compiler error and warning messages.

3.3.4 **Miscellaneous Directives**

3.3.4.1 **#error**

Usage:

```
#error error_message
```

Generates a compiler error.

3.3.4.2 **#pragma**

Usage:

```
#pragma operator
```

Only "#pragma message" is supported at this time.

```
#pragma message "message".
```

Emits the *message*.



3.3.4.3 **#warning**

Usage:

`#warning warning_message`

Generates a compiler warning.



4 ASL-AML Subsystem

This subsystem consists of tools to compile ASL source code to AML byte code, and disassemble AML byte code back to the original ASL code.

4.1 ASL Compiler

The iASL compiler fully supports ACPI 5.1. The ASL and AML languages are defined within the ACPI specification.

4.1.1 Support for Symbolic Operators and Expressions (ASL+)

As an extension to the ASL language, iASL implements support for symbolic (C-style) operators for math and logical expressions. This can greatly simplify ASL code as well as improve readability and maintainability. These language extensions can exist concurrently with all legacy ASL code and expressions. ASL with these language extensions is called ASL+.

The symbolic extensions are 100% compatible with existing AML interpreters, since no new AML opcodes are created. To implement the extensions, the iASL compiler transforms the symbolic expressions into the legacy ASL/AML equivalents at compile time.

Full symbolic expressions are supported, along with the standard C precedence and associativity rules.

Full disassembler support for the symbolic expressions is provided, and creates a migration path for existing ASL code via the disassembly process.

Below is the full list of the currently supported symbolic operators with examples to follow.

ASL+ Syntax Legacy ASL Equivalent

// Math operators

Z = X + Y	Add (X, Y, Z)
Z = X - Y	Subtract (X, Y, Z)
Z = X * Y	Multiply (X, Y, Z)
Z = X / Y	Divide (X, Y, , Z)
Z = X % Y	Mod (X, Y, Z)
Z = X << Y	ShiftLeft (X, Y, Z)
Z = X >> Y	ShiftRight (X, Y, Z)
Z = X & Y	And (X, Y, Z)
Z = X Y	Or (X, Y, Z)
Z = X ^ Y	Xor (X, Y, Z)
Z = ~X	Not (X, Z)
X++	Increment (X)
X--	Decrement (X)



```
// Logical operators

(X == Y)          LEqual (X, Y)
(X != Y)          LNotEqual (X, Y)
(X < Y)           LLess (X, Y)
(X > Y)           LGreater (X, Y)
(X <= Y)          LLessEqual (X, Y)
(X >= Y)          LGreaterEqual (X, Y)
(X && Y)           LAnd (X, Y)
(X || Y)          LOr (X, Y)
(!X)              LNot (X)

// Compound assignment operations

X = Y             Store (Y, X)
X += Y           Add (X, Y, X)
X -= Y           Subtract (X, Y, X)
X *= Y           Multiply (X, Y, X)
X /= Y           Divide (X, Y, , X)
X %= Y           Mod (X, Y, X)
X <<= Y          ShiftLeft (X, Y, X)
X >>= Y          ShiftRight (X, Y, X)
X &= Y           And (X, Y, X)
X |= Y           Or (X, Y, X)
X ^= Y           Xor (X, Y, X)
```

Examples:

```
If (LAnd (LAnd (LEqual (IID0, EID0), LEqual (IID1, EID1)), LAnd (LEqual
    (IID2, EID2), LEqual (IID3, EID3))))
--->   if ((IID0 == EID0) && (IID1 == EID1) &&
        (IID2 == EID2) && (IID3 == EID3))

If (LAnd (LGreaterEqual (\_PR.CLVL, One), LLessEqual (\_PR.CLVL, 0x03)))
--->   if ((\_PR.CLVL >= 1) && (\_PR.CLVL <= 3))

If (LOr (LEqual (And (RF0H, 0xE0), 0x60), LEqual (And (
    RF0H, 0xE0), 0x40)))
--->   if (((RF0H & 0xE0) == 0x60) || ((RF0H & 0xE0) == 0x40))

ShiftRight (And (\_SB.IAOE.ECTM, 0x00FF0000), 0x10)
--->   (\_SB.IAOE.ECTM & 0x00FF0000) >> 0x10

If (LAnd (And (IUBE, One), LGreaterEqual (OSYS, 0x07DC)))
--->   if ((IUBE & 1) && (OSYS >= 0x07DC))
```



4.1.1.1 Binary AML Considerations

Typically, the iASL compiler will produce identical AML code for both symbolic expressions and the equivalent legacy ASL code.

For example, consider these two semantically identical statements:

```
Add (Local0, ShiftLeft (Temp, 3), Local1)
```

```
Local1 = Local0 + (Temp << 3)
```

Both of these statements compile to the identical AML code, as shown in the listing below:

```
11:          Add (Local0, ShiftLeft (Temp, 3), Local1)
0000003A: 72 60 ..... "r`"
0000003C: 79 54 45 4D 50 0A 03 00 "yTEMP..."
00000044: 61 ..... "a"

13:          Local1 = Local0 + (Temp << 3)
00000045: 72 60 ..... "r`"
00000047: 79 54 45 4D 50 0A 03 00 "yTEMP..."
0000004F: 61 ..... "a"
```

4.1.1.2 AML Disassembler Notes

The AML disassembler by default produces ASL+ code with symbolic operators and expressions. In fact, this is the quickest way to convert existing (legacy) ASL code to the ASL+ language.

In general, a disassemble/recompile sequence will produce AML code that is identical to the original AML code. However, there are some cases where this is not true and the AML code becomes optimized during the process. For example:

```
14:          Store (Multiply (TEMP, 5), Local1)
00000050: 70 ..... "p"
00000051: 77 54 45 4D 50 0A 05 00 "wTEMP..."
00000059: 61 ..... "a"
```

This code will disassemble to equivalent ASL+ and then recompile to slightly different AML:

```
14:          Local1 = TEMP * 5
00000050: 77 54 45 4D 50 0A 05 61 "wTEMP..a"
```

As shown above, the disassembly/recompile process has optimized the original statement to this legacy ASL equivalent:

```
18:          Multiply (TEMP, 5, Local1)
00000062: 77 54 45 4D 50 0A 05 61 "wTEMP..a"
```



4.1.2 Built-in ASL Macros

The iASL compiler implements several macros that are not part of the ACPI specification, but have been implemented for convenience. These macros are similar to their C equivalents:

__FILE__ - Returns the current input (source) filename.

__PATH__ - Returns the current full pathname of the input (source) file.

__LINE__ - Returns the current line number within the input (source) file.

__DATE__ - Returns the current date and time.

__IASL__ - Always defined for the iASL compiler. Can be used to differentiate between ASL compilers and/or other preprocessors such as a C preprocessor.

Example:

```
DefinitionBlock ("dsdt.aml", "DSDT", 2, "Intel", "Template", 0x00000001)
{
    Method (MAIN, 0, NotSerialized)
    {
        Store (__FILE__, Debug)
        Store (__LINE__, Debug)
        Store (__DATE__, Debug)
    }
}

- execute main
Executing \MAIN

[ACPI Debug] String [0x08] "dsdt.asl"
[ACPI Debug] Integer 0x0000000000000006
[ACPI Debug] String [0x18] "Thu Jan 13 12:29:44 2011"
```

4.1.3 Compiler Analysis Phases

4.1.3.1 General ASL Syntax Analysis

Enhanced ASL syntax checking. Multiple errors and warnings are reported in one compile – the compiler recovers to the next ASL statement upon detection of a syntax error.

Constants larger than the target data size are flagged as errors. For example, if the target data type is a BYTE, the compiler will reject any constants larger than 0xFF (255). The same error checking is performed for WORD and DWORD constants.

4.1.3.2 General Semantic Analysis

All named references to objects are checked for validity. All names (both full ACPI Namepaths and 4-character Namesegs) must refer to valid declared objects.



All Fields created within Operation Regions and Buffers are checked for out-of-bounds offset and length. The minimum access width specified for the field is used when performing this check to ensure that the field can be properly accessed.

4.1.3.3 Control Method Semantic Analysis

Method local variables are checked for initialization before use. All locals (LOCAL0 – LOCAL7) must be initialized before use. This prevents fatal run-time errors for uninitialized ASL arguments.

Method arguments are checked for validity. For example, a control method defined with 1 argument can't use ARG4. Again, this prevents fatal run-time errors for uninitialized ASL arguments.

Control method execution paths are analyzed to determine if all return statements are of the same type — to ensure that either all return statements return a value, or all do not. This includes an analysis to determine if execution can possibly fall through to the default implicit return (which does not return a value) at the end of the method. A warning is issued if some method control paths return a value and others do not

4.1.3.4 Control Method Invocation Analysis

All control method invocations (method calls) are checked for the correct number of arguments in all cases, regardless of whether the method is invoked with argument parentheses or not (e.g. both ABCD() and ABCD). Prevents run-time errors caused by non-existent arguments.

All control methods and invocations are checked to ensure that if a return value is expected and used by the method caller, the target method actually returns a value.

4.1.3.5 Predefined ACPI Names

For all ACPI reserved control methods (such as _STA, _TMP, etc.), both the number of arguments and return types (whether the method must return a value or not) are checked. This prevents missing operand run-time errors that may not be detected until after the product is shipped.

Predefined names that are defined with arguments or return no value must be implemented as control methods and are flagged if they are not. Predefined names that may be implemented as static objects via the ASL Name() operator are typechecked.

Reserved names (all names that begin with an underscore are reserved) that are not currently defined by ACPI are flagged with a warning.

4.1.3.6 Resource Descriptors

Validation of values for Resource Descriptors is performed wherever possible.

Address Descriptors: Values for AddressMin, AddressMax, Length, and Granularity are validated:

AddressMax must be greater than or equal to AddressMin

Length must be less than or equal to (Max-Min+1)

If Granularity is non-zero, it must be a power-of-two minus one.

The IsMinFixed and IsMaxFixed parameters are validated against the values given for the AddressMin, AddressMax, Length, and Granularity. This implements the rules given in Table 6-179 of the ACPI 5.0 specification.



4.1.4 Compiler Optimizations

The compiler implements several optimizations whose primary intent is to reduce the size of the resulting AML output.

4.1.4.1 Named References

Namepaths within the ASL can often be optimized to shorter strings than specified by the ASL programmer. For example, a full pathname can be optimized to a single 4-character ACPI name if the final name in the path is within the local scope or is along the upward search path to the root from the local scope. In addition, the carat (^) operator can often be used to optimize Namepaths.

4.1.4.2 Integers

Certain integers can be optimized to single-byte AML opcodes. These are: 0, 1, and -1. The opcodes used are Zero, One, and Ones. All other integers are described in AML code using the smallest representation necessary – either Byte, Word, DWord, or QWord.

4.1.4.3 Constant Folding

All expressions that can be evaluated at compile-time rather than run time are executed and reduced to the simplified value. The ASL operators that are supported in this manner are the Type3, Type4, and Type5 operators defined in the ACPI specification.

The iASL compiler contains the ACPICA AML interpreter which is used to evaluate these expressions at compile time.

4.2 ASL-to-AML Disassembler

The AML disassembler is used to regenerate the original ASL code from a binary ACPI AML table. Tables that contain AML are typically the DSDT and any SSDTs.

The disassembler is invoked by using the `-d` option of iASL.

Because the AML contains all of the original symbols from the ASL, the AML byte code of a binary ACPI table can be disassembled back to nearly the original ASL code with only a few caveats.

4.2.1 Multiple Table Disassembly

There is a known difficulty in disassembling control method invocations for methods that are external to the table being disassembled. This is because there is often insufficient information within the AML to properly disassemble these method invocations.

Therefore, whenever possible, all DSDTs and SSDTs for a given machine should be disassembled together using the `-da` or `-e` option. If all SSDTs are included this way, the necessary information will be available to fully and correctly disassemble the target table.



For example, to disassemble the DSDT on a machine with multiple SSDTs:

```
$ iasl -essdt1.dat,ssdt2.dat,ssdt3.dat -d dsdt.dat

Intel ACPI Component Architecture
AML Disassembler version 20100528 [May 28 2010]
Copyright (c) 2000 - 2010 Intel Corporation
Supports ACPI Specification Revision 5.0

Loading Acpi table from file DSDT.dat
Acpi table [DSDT] successfully installed and loaded
Loading Acpi table from file ssdt1.dat
Acpi table [SSDT] successfully installed and loaded
Pass 1 parse of [SSDT]
Pass 2 parse of [SSDT]
Loading Acpi table from file ssdt2.dat
Acpi table [SSDT] successfully installed and loaded
Pass 1 parse of [SSDT]
Pass 2 parse of [SSDT]
Loading Acpi table from file ssdt3.dat
Acpi table [SSDT] successfully installed and loaded
Pass 1 parse of [SSDT]
Pass 2 parse of [SSDT]
Pass 1 parse of [DSDT]
Pass 2 parse of [DSDT]
Parsing Deferred Opcodes (Methods/Buffers/Packages/Regions)
.....
Parsing completed
Disassembly completed, written to "DSDT.dsl"
```

4.2.2 External Declarations

During disassembly, any ACPI names that cannot be found or resolved within the table under disassembly are added to a list of externals that are emitted at the start of the table definition block, as shown below:

```
DefinitionBlock ("DSDT.aml", "DSDT", 1, "INTEL ", "EXAMPLE", 0x06040000)
{
    External (Z003)
    External (\_SB_.PCI0.LNKH)
```

If the object type that is associated with the name can be resolved during the disassembly, this type is emitted with the external statement also:

```
External (PETE, IntObj)
External (HDOS, MethodObj) // 0 Arguments
External (ECST, MethodObj) // 1 Arguments
External (PSEN, FieldUnitObj)
External (C7EN, FieldUnitObj)
External (\_PR_.CPU1, DeviceObj)
External (\_PR_.CPU0, DeviceObj)
```

4.2.2.1 The External AML Opcode

In ACPI 6.1, a new AML opcode (0x15) was defined to allow the compiler to insert external declarations within the AML code itself. This allows the disassembler to easily and deterministically construct the original External() statements in the source ASL code.



4.2.2.2 Generation of ASL External() Statements

There are two ways that external declarations can be emitted by the disassembler: external opcodes within the AML and ACPI names that cannot be found within the table. External opcodes encode names that should be declared as external named objects. This facilitates disassembly of external control method objects because the external opcode contains the object's type as well as the number of parameters for external control methods. These externals are emitted at the start of the table definition block shown below:

However, not all AML contain external opcodes. During disassembly, any ACPI names that cannot be found or resolved within the table under disassembly are added to a list of externals that are emitted at the start of the table definition block, as shown above.

4.3 ASL to ASL+ Converter

Legacy ASL (also known as ASL) does not support symbolic operators such as arithmetic and logical operators. This often results in code that looks cluttered and therefore difficult to read and maintain. The ASL/ASL+ Converter can be used to translate legacy ASL to ASL+ by compiling and disassembling an input ASL file while retaining comments. Since ASL+ has support for symbolic operators, the ASL/ASL+ Converter can be used to increase readability and maintainability.

4.3.1 Using the ASL/ASL+ Converter

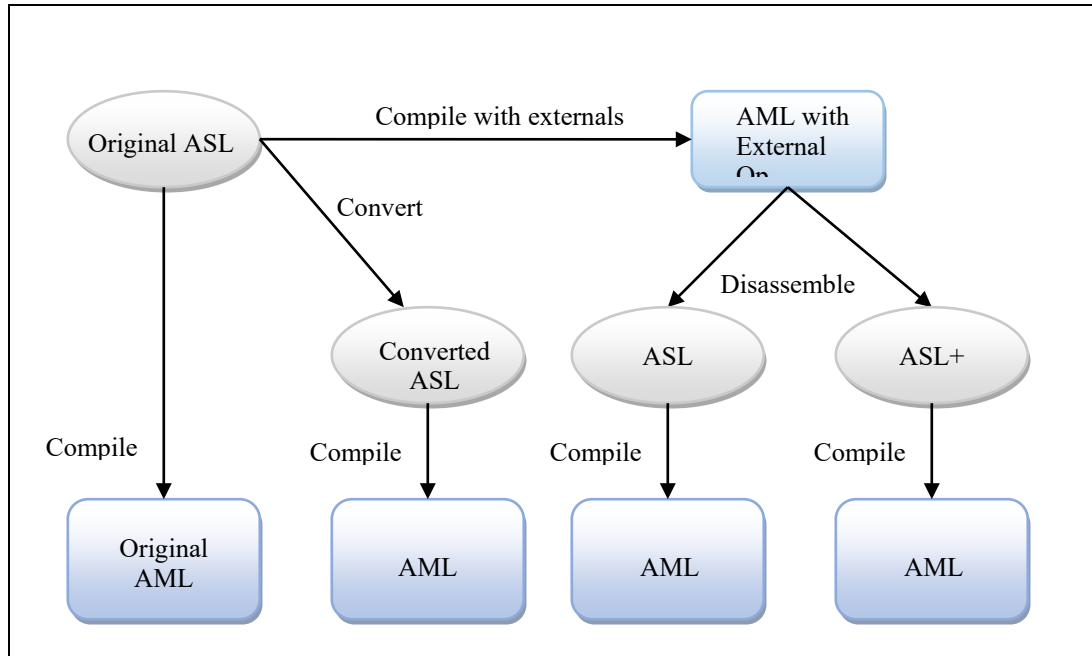
To run the converter, use the `-ca` flag along with a targetASL filename.

```
➤ iasl -ca sstdt.asl
```

This produces translated dsl files for `sstdt.asl` as well as all files that `sstdt.asl` includes via the ASL include. A sample file is located at `acpica/tests/misc/converterSample.asl`

4.3.2 Example: ASL/ASL+ Converter and Disassembler

AML files resulting from compiling the converted file should be an exact binary match as a normally compiled ASL file. This is true for files that have been compiled with externals in place, disassembled with externals, and recompiled. Figure 1 illustrates a portion of the ASL test suite architecture that exercise the ideas described above. Note that all AML files generated from this process should all have matching binary comparisons.

**Figure 1. ASL Test Suite Architecture**

4.3.3 Items currently not supported

The following ASL constructs are currently not supported within the ASL/ASL+ converter:

1. Pre-processor directives such as `#include` and macros are not supported.
2. Comments within buffer and resource template declarations will not be kept.
3. Using the `-f` option in conjunction with `-ca` does not guarantee a correct conversion.



5 ACPI Data Table Subsystem

This subsystem consists of tools to compile ACPI Data Tables such as the FADT, MADT, SRAT, etc., to binary ACPI tables, and to disassemble binary ACPI data tables to formatted and structured tables in the data table language.

5.1 Data Table Compiler

The iASL Data Table Compiler is intended to compile ACPI data tables (FADT, MADT, etc) to binary data, to be integrated into a BIOS project.

Data Tables are described in a simple language that is directly compatible with the output of the data table disassembler. The two goals for this language are simplicity and compatibility with the disassembler.

Data Table input files are automatically detected and differentiated from ASL files, therefore no special iASL option is required to invoke the data table compiler.

The default output is a binary ACPI data table. Use one of the iASL options `-ta`, `-tc`, or `-ts`, in order to create the binary output in an ASCII hex table that is suitable for direct inclusion into a BIOS project.

On some host operating systems, the iASL data table disassembler and compiler may be used to disassemble a data table, modify it, then recompile it to a binary file that can be used to override the original table. This override support depends upon features supported by the host operating system. This feature would be useful, for example, to repair invalid or incorrect values in an important table such as the FADT.

5.1.1 Input Format

The format of the input file is a series of fields, each of which represents a field in the target ACPI table. Each field is comprised of a field name and a field value, separated by a colon. The fields must appear in the exact order in which they are defined for the target ACPI table.

```
<FieldName> : <Field Value>
<FieldName> : <Field Value>
.
.
.
<FieldName> : <Field Value>
```

Both slash-asterisk and slash-slash comments are supported. Blank lines are ignored.

The language itself is defined in the next section. The Field Names (`AcpiTableName`) that are available for any given ACPI table can be obtained from the template file generated by the iASL Template Generator:

```
iASL -T <ACPI Table Signature> // Obtain one template
iASL -T all // Obtain templates for all ACPI tables
```



5.1.1.1 Ignored Fields/Comments

Comments can be either traditional `/* .. */` style or `//` style.

Additional fields that are ignored (and are essentially comments) are fields surrounded by brackets – `[..]`. This allows automatic compatibility with the output of the AML disassembler.

5.1.2 Data Table Definition Language

```
//
// Root Term
//
DataTable :=
    FieldList

//
// Field Terms
//
FieldList :=
    Field |
    <Field FieldList>

Field :=
    <FieldDefinition OptionalFieldComment> |
    CommentField

FieldDefinition :=

    // Fields for predefined (known) ACPI tables
    <OptionalFieldName ':' FieldValue> |

    // Generic data types (used for custom or undefined ACPI tables)
    <'UINT8'   ':' IntegerExpression> | // 8-bit unsigned integer
    <'UINT16'  ':' IntegerExpression> | // 16-bit unsigned integer
    <'UINT24'  ':' IntegerExpression> | // 24-bit unsigned integer
    <'UINT32'  ':' IntegerExpression> | // 32-bit unsigned integer
    <'UINT40'  ':' IntegerExpression> | // 40-bit unsigned integer
    <'UINT48'  ':' IntegerExpression> | // 48-bit unsigned integer
    <'UINT56'  ':' IntegerExpression> | // 56-bit unsigned integer
    <'UINT64'  ':' IntegerExpression> | // 64-bit unsigned integer
    <'String'  ':' String>             | // Quoted ASCII string
    <'Unicode' ':' String>             | // Quoted ASCII string -> Unicode string
    <'Buffer'  ':' ByteConstList>     | // Raw buffer of 8-bit unsigned integers
    <'GUID'    ':' Guid>              | // In GUID format
    <'Label'   ':' Label>             | // ASCII label - unquoted string

OptionalFieldName :=
    Nothing |
    AsciiCharList // Optional field name/description

FieldValue :=
    IntegerExpression | String | Buffer | Flags | Label

OptionalFieldComment :=
    Nothing |
    <[' AsciiCharList ']'>

CommentField :=
    <[' AsciiCharList NewLine]> |
    <[' AsciiCharList '*/]> |
    <[' AsciiCharList ']'>

//
// Data Expressions
//
IntegerExpression :=
    Integer |
    <IntegerExpression IntegerOperator IntegerExpression> |
    <(' IntegerExpression ')>
```



```
//
// Operators below are shown in precedence order. The meanings and precedence rules
// are the same as the C language. Parentheses have precedence over
// all operators.
//
IntegerOperator :=
    '\!' | '\~' | '\*' | '/' | '%' | '+' | '-' | '<<' | '>>' |
    '<' | '>' | '<=' | '>=' | '==' | '!=' | '&' | '^' | '|' |
    '&&' | '||' |

//
// Data Types
//
String :=
    <'"' AsciiCharList '">
Buffer :=
    ByteConstList
Guid :=
    <DWordConst '-' WordConst '-' WordConst '-' WordConst '-' Const48>
Label :=
    AsciiCharList

//
// Data Terms
//
Integer :=
    ByteConst | WordConst | Const24 | DWordConst | Const40 | Const48 | Const56 |
    QWordConst | LabelReference

LabelReference :=
    <'$' Label>

Flags :=
    OneBit | TwoBits

ByteConstList :=
    ByteConst |
    <Byte Const ' ' ByteConstList>

AsciiCharList :=
    Nothing |
    PrintableAsciiChar |
    <PrintableAsciiChar AsciiCharList>

//
// Terminals
//
ByteConst :=
    0x00-0xFF
WordConst :=
    0x0000 - 0xFFFF
Const24 :=
    0x000000 - 0xFFFFF
DWordConst :=
    0x00000000 - 0xFFFFFFFF
Const40 :=
    0x0000000000 - 0xFFFFFFFFFFFF
Const48 :=
    0x000000000000 - 0xFFFFFFFFFFFFFF
Const56 :=
    0x00000000000000 - 0xFFFFFFFFFFFFFFF
QWordConst :=
    0x0000000000000000 - 0xFFFFFFFFFFFFFFFF

OneBit :=
    0 - 1
TwoBits :=
    0 - 3

PrintableAsciiChar :=
    0x20 - 0x7E
NewLine :=
    '\n'
```



5.1.3 Input Example

Input is similar to the output of the Data Table disassembler. The example below shows a portion of input describing a FADT.

```

/*
 * Intel ACPI Component Architecture
 * iASL Compiler/Disassembler version 20100528
 *
 * Template for [FACP] ACPI Table
 * Format: [ByteLength]  FieldName : HexFieldValue
 */

[004]                Signature : "FACP" // Fixed ACPI Description Table
[004]                Table Length : 000000F4
[001]                Revision : 04
[001]                Checksum : 4E
[006]                Oem ID : "INTEL "
[008]                Oem Table ID : "TEMPLATE"
[004]                Oem Revision : 00000000
[004]                Asl Compiler ID : "INTL"
[004]                Asl Compiler Revision : 20100528

[004]                FACS Address : 00000001

```

Each valid, non-comment line in the input file represents a field within the target ACPI table. The value in brackets (e.g., “[004]”) is the required length (in bytes) of the field described on the line. It is essentially a comment and is not required; this value is created by the iASL template generator for reference purposes only.

5.1.4 Data Types for User-Entered Fields

The following data types are supported:

5.1.4.1 Integers

All integers in ACPI are unsigned. Four major types of unsigned integers are supported by the compiler: *Bytes*, *Words*, *DWords* and *QWords*. In addition, for special cases, there are some odd sized integers such as 24-bit and 56-bit. The actual required width of an integer is defined by the ACPI table. If an integer is specified that is numerically larger than the width of the target field within the input source, an error is issued by the compiler. Integers are expected by the data table compiler to be entered in hexadecimal with no “hex” prefix.

Examples:

```

[001]                Revision : 04                // Byte (8-bit)
[002]                C2 Latency : 0000            // Word (16-bit)
[004]                DSDT Address : 00000001      // DWord (32-bit)
[008]                Address : 0000000000000001  // QWord (64-bit)

```

Length of non-power-of-two examples:

```

[003]                Reserved : 000000           // 24 bits
[007]                Capabilities : 0000000000000000 // 56 bits

```

5.1.4.2 Integer Expressions

Expressions are supported in all fields that require an integer value.

Supported operators (Standard C meanings, in precedence order):

! Logical NOT



~	Bitwise ones compliment (NOT)
*	Multiply
/	Divide
%	Modulo
+	Add
-	Subtract
<<	Shift left
>>	Shift right
<	Less than
>	Greater than
<=	Less than or equal
>=	Greater than or equal
=	Equal
!=	Not Equal
&	Bitwise AND
^	bitwise Exclusive OR
	Bitwise OR
&&	Logical AND
	Logical OR

Examples:

```
[001] Revision : 04 * 4 // Byte (8-bit)
[002] C2 Latency : 0032 + 8 // Word (16-bit)
[004] DSDT Address : 00000001 // DWord (32-bit)
[008] Address : 0000000000000001 // QWord (64-bit)
```

5.1.4.3 Flags

Many ACPI tables contain flag fields. For these fields, only the individual flag bits need to be specified to the compiler. The individual bits are aggregated into a single integer of the proper size by the compiler.

Examples:

```
[002] Flags (decoded below) : 0005
      Polarity : 1
      Trigger Mode : 1
```

In this example, only the Polarity and Trigger Mode fields need to be specified to the compiler (as either zero or one). The compiler then creates the final 16-bit Flags field for the ACPI table.

5.1.4.4 Strings

Strings must always be surrounded by quotes. The actual string that is generated by the compiler may or may not be null-terminated, depending on the table definition in the ACPI specification. For example, the *OEM ID* and *OEM Table ID* in the common ACPI table header (shown above) are fixed at six and eight characters, respectively. They are not necessarily null terminated. Most other strings, however, are of variable-length and are automatically null terminated by the compiler. If a string is specified that is too long for a fixed-length string field, an error is issued. String lengths are specified in the definition for each relevant ACPI table.

Escape sequences within a quoted string are not allowed. The backslash character ‘\’ refers to the root of the ACPI namespace.

Examples:

```
[008] Oem Table ID : "TEMPLATE" // Fixed length
```



```
[006] Processor UID String : "\CPU0" // Variable length
```

5.1.4.5 Buffers

A buffer is typically used whenever the required binary data is larger than a QWord, or the data does not fit exactly into one of the standard integer widths. Examples include UUIDs and byte data defined by the SLIT table.

Examples:

```
// SLIT entry
[032] Locality 0 : 0A 10 16 17 18 19 1A 1B 1C 1D 1E 1F 20 21 22 23 \
           04 25 26 27 28 29 2A 2B 2C 2D 2E 2F 30 31 32 33
// DMAR entry
[002] PCI Path : 1F 07
```

Each hexadecimal byte should be entered separately, separated by a space. Additional lines may be specified with the continuation character ('\').

5.1.5 Fields Set Automatically

There are several types of ACPI table fields that are set automatically by the compiler. This simplifies the process of ACPI table development by relieving the programmer from these tasks.

Checksums: All ACPI table checksums are computed and inserted automatically. This includes the main checksum that appears in the standard ACPI table header, as well as any additional checksum fields such as the extended checksum that appears in the ACPI 2.0 RSDP.

Table Lengths: All ACPI table lengths are computed and inserted automatically. This includes the master table length that appears in the common ACPI table header, and the length of any internal subtables as applicable.

Examples:

```
[004] Table Length : 000000F4
[001] Subtable Type : 08 <Platform Interrupt Sources>
[001] Length : 10
[001] Subtable Type : 01 <Memory Affinity>
[001] Length : 28
```

Flags: As described in the previous section, individual flags are aggregated automatically by the compiler and inserted into the ACPI table as the correctly sized and valued integer.

Compiler IDs: The data table compiler automatically inserts the ID and current revision for iASL into the common ACPI table header for each table during compilation.

5.1.6 Special Fields

Reserved Fields: All fields that are declared as *Reserved* by the table definition within the ACPI (or other) specification should be set to zero.



Table Revision: This field in the common ACPI table header is often very important and defines the structure of the remaining table. The developer should take care to ensure that this value is correct and current. This field is *not* set automatically.

The iASL table template generator emits tables with a *TableRevision* that is the latest known value.

Table Signature: There are several table signatures within ACPI that are either different from the table name, or have unusual length:

```
FADT - signature is "FACP".
MADT - signature is "APIC".
RSDP - signature is "RSD PTR " (with trailing space)
```

5.1.7 Generic Fields / Generic Data Types

The following “generic” data types/field names are provided to support tables like the UEFI, which mostly consist of platform-defined data.

UINT8	Generates an 8-bit unsigned integer
UINT16	Generates a 16-bit unsigned integer
UINT24	Generates a 24-bit unsigned integer
UINT32	Generates a 32-bit unsigned integer
UINT40	Generates a 40-bit unsigned integer
UINT48	Generates a 48-bit unsigned integer
UINT56	Generates a 56-bit unsigned integer
UINT64	Generates a 64-bit unsigned integer
String	Generates a null-terminated ASCII string (ASCIIZ)
Unicode	Generates a null terminated Unicode (UTF-16) string
Buffer	Generates a buffer of 8-bit unsigned integers
GUID	Generates an encoded GUID in a 16-byte buffer
Label	Generates a Label at the current location (offset) within the table. This label can be referenced within integer expressions by prepending the label with a '\$' sign.

Examples:

```
Label : StartRecord
UINT8 : 11
UINT16 : $EndRecord - $StartRecord // Record length
UINT24 : 112233
UINT32 : 11223344
UINT56 : 11223344556677
UINT64 : 1122334455667788

String : "This is a string"
DevicePath : "\PciRoot(0)\Pci(0x1f,1)\Usb(0,0)"
Unicode : "This string will be encoded to Unicode"

Buffer : AA 01 32 4C 77
GUID : 11223344-5566-7788-99aa-bbccddeeff00
Label : EndRecord
```

Example UEFI table with generic data types:



```
/*
 * Intel ACPI Component Architecture
 * iASL Compiler/Disassembler version 20101209-32 [Jan  6 2011]
 * Copyright (c) 2000 - 2011 Intel Corporation
 *
 * Template for [UEFI] ACPI Table
 * Format: [ByteLength]  FieldName : HexFieldValue
 */

[004]                Signature : "UEFI"      /* UEFI Boot Optimization Table */
[004]                Table Length : 00000036
[001]                Revision : 01
[001]                Checksum : 9B
[006]                Oem ID : "INTEL "
[008]                Oem Table ID : "TEMPLATE"
[004]                Oem Revision : 00000001
[004]                Asl Compiler ID : "INTL"
[004]                Asl Compiler Revision : 20100528

[016]                UUID Identifier : 03020100-0504-0706-0809-0A0B0C0D0E0F
[002]                Data Offset : 0000

                Label : StartRecord
                UINT8 : ab
                UINT16 : $EndRecord - $StartRecord // length
                UINT24 : 123456
                UINT32 : 01020304
                UINT56 : 11223344556677
                UINT64 : 0102030405060708

                String : "This is a string"
                DevicePath : "\PCI0\ABCD"
                Unicode : "Unicode String"

                Buffer : 41 42 43 44 45
                String : ""
                GUID : 03020100-0504-0706-0809-0A0B0C0D0E0F
                Label : EndRecord
```



5.2 Data Table Disassembler

The Data Table Disassembler will disassemble and format any ACPI data table (non-AML table) that is supported. The current set of ACPI Data Tables that are supported by the Data Table disassembler and Data Table compiler are shown below:

APIC (MADT)	Multiple APIC Description Table
ASF!	Alert Standard Format table
BOOT	Simple Boot Flag Table
BERT	Boot Error Record Table
BGRT	Boot Graphics Resource Table
CPEP	Corrected Platform Error Polling table
DBGP	Debug Port table
DMAR	DMA Remapping table
DRTM	Dynamic Root of Trust for Measurement table
ECDT	Embedded Controller Boot Resources Table
EINJ	Error Injection table
ERST	Error Record Serialization Table
FACP (FADT)	Fixed ACPI Description Table
FACS	Firmware ACPI Control Structure
FPDT	Firmware Performance Data Table
GTDT	Generic Timer Description Table
HEST	Hardware Error Source Table
HPET	High Precision Event Timer table
MPST	Memory Power State Table
IVRS	I/O Virtualization Reporting Structure
MCFG	PCI Memory Mapped Configuration table
MCHI	Management Controller Host Interface table
MSCT	Maximum System Characteristics Table
PCCT	Platform Communications Channel Table
PMTT	Platform Memory Topology Table
RASF	RAS Feature table
RSDP	Root System Description Pointer
RSDT	Root System Description Table
SBST	Smart Battery Specification Table
SLIC	Software Licensing Description Table
SLIT	System Locality Distance Information Table
SPCR	Serial Port Console Redirection table
SPMI	Server Platform Management Interface table
SRAT	System Resource Affinity Table
TCPA	Trusted Computing Platform Alliance table
UEFI	Uefi Boot Optimization Table
WAET	Windows ACPI Emulated devices Table
WDAT	Watchdog Action Table
WDDT	Watchdog Timer Description Table
WDRT	Watchdog Resource Table
XSDT	Extended System Description Table

These non-AML ACPI data tables can be “disassembled”, meaning that they are formatted with the individual fields and data. While most ACPI tables found in the field are supported, there may exist a few additional ACPI tables that are not defined in the ACPI specification and are not supported by the disassembler (or compiler.)

5.2.1 Example Output

Example disassembly of an FADT. This example contains a revision 4 FADT, which contains both 32-bit and 64-bit addresses for the ACPI registers.

```
/*
 * Intel ACPI Component Architecture
 * AML Disassembler version 20100528
 *
 * Disassembly of FACP.aml, Thu Jun 17 13:18:03 2010
 *
 * ACPI Data Table [FACP]
```



```

*
* Format: [HexOffset DecimalOffset ByteLength]  FieldName : FieldValue
*/

[000h 0000 4]                Signature : "FACP"
[004h 0004 4]                Table Length : 000000F4
[008h 0008 1]                Revision : 04
[009h 0009 1]                Checksum : 9F
[00Ah 0010 6]                Oem ID : "INTEL"
[010h 0016 8]                Oem Table ID : "EXAMPLE"
[018h 0024 4]                Oem Revision : 00000002
[01Ch 0028 4]                Asl Compiler ID : "INTL"
[020h 0032 4]                Asl Compiler Revision : 20100528

[024h 0036 4]                FACS Address : 78D22000
[028h 0040 4]                DSDT Address : 71F61000
[02Ch 0044 1]                Model : 00
[02Dh 0045 1]                PM Profile : 04 (Enterprise Server)
[02Eh 0046 2]                SCI Interrupt : 0009
[030h 0048 4]                SMI Command Port : 000000B2
[034h 0052 1]                ACPI Enable Value : A0
[035h 0053 1]                ACPI Disable Value : A1
[036h 0054 1]                S4BIOS Command : 00
[037h 0055 1]                P-State Control : 00
[038h 0056 4]                PM1A Event Block Address : 00000400
[03Ch 0060 4]                PM1B Event Block Address : 00000000
[040h 0064 4]                PM1A Control Block Address : 00000404
[044h 0068 4]                PM1B Control Block Address : 00000000
[048h 0072 4]                PM2 Control Block Address : 00000450
[04Ch 0076 4]                PM Timer Block Address : 00000408
[050h 0080 4]                GPE0 Block Address : 00000420
[054h 0084 4]                GPE1 Block Address : 00000000
[058h 0088 1]                PM1 Event Block Length : 04
[059h 0089 1]                PM1 Control Block Length : 02
[05Ah 0090 1]                PM2 Control Block Length : 01
[05Bh 0091 1]                PM Timer Block Length : 04
[05Ch 0092 1]                GPE0 Block Length : 10
[05Dh 0093 1]                GPE1 Block Length : 00
[05Eh 0094 1]                GPE1 Base Offset : 00
[05Fh 0095 1]                CST Support : 00
[060h 0096 2]                C2 Latency : 0065
[062h 0098 2]                C3 Latency : 03E9
[064h 0100 2]                CPU Cache Size : 0000
[066h 0102 2]                Cache Flush Stride : 0000
[068h 0104 1]                Duty Cycle Offset : 01
[069h 0105 1]                Duty Cycle Width : 00
[06Ah 0106 1]                RTC Day Alarm Index : 0D
[06Bh 0107 1]                RTC Month Alarm Index : 00
[06Ch 0108 1]                RTC Century Index : 32
[06Dh 0109 2]                Boot Flags (decoded below) : 0001
    Legacy Devices Supported (V2) : 1
    8042 Present on ports 60/64 (V2) : 0
    VGA Not Present (V4) : 0
    MSI Not Supported (V4) : 0
    PCIe ASPM Not Supported (V4) : 0
[06Fh 0111 1]                Reserved : 00
[070h 0112 4]                Flags (decoded below) : 000004A5
    WBINVD instruction is operational (V1) : 1
    WBINVD flushes all caches (V1) : 0
    All CPUs support C1 (V1) : 1
    C2 works on MP system (V1) : 0
    Control Method Power Button (V1) : 0
    Control Method Sleep Button (V1) : 1
    RTC wake not in fixed reg space (V1) : 0
    RTC can wake system from S4 (V1) : 1
    32-bit PM Timer (V1) : 0
    Docking Supported (V1) : 0
    Reset Register Supported (V2) : 1
    Sealed Case (V3) : 0
    Headless - No Video (V3) : 0
    Use native instr after SLP_TYPx (V3) : 0
    PCIEXP_WAK Bits Supported (V4) : 0
    Use Platform Timer (V4) : 0
    RTC STS valid on S4 wake (V4) : 0
    Remote Power-on capable (V4) : 0
    Use APIC Cluster Model (V4) : 0
    Use APIC Physical Destination Mode (V4) : 0

```



```
[074h 0116 12]          Reset Register : <Generic Address Structure>
[074h 0116 1]           Space ID : 01 (SystemIO)
[075h 0117 1]           Bit Width : 08
[076h 0118 1]           Bit Offset : 00
[077h 0119 1]           Access Width : 01
[078h 0120 8]           Address : 00000000000000CF9

[080h 0128 1]           Value to cause reset : 06
[081h 0129 3]           Reserved : 000000
[084h 0132 8]           FACS Address : 0000000078D22000
[08Ch 0140 8]           DSDT Address : 0000000071F61000
[094h 0148 12]          PM1A Event Block : <Generic Address Structure>
[094h 0148 1]           Space ID : 01 (SystemIO)
[095h 0149 1]           Bit Width : 20
[096h 0150 1]           Bit Offset : 00
[097h 0151 1]           Access Width : 02
[098h 0152 8]           Address : 00000000000000400

[0A0h 0160 12]          PM1B Event Block : <Generic Address Structure>
[0A0h 0160 1]           Space ID : 01 (SystemIO)
[0A1h 0161 1]           Bit Width : 00
[0A2h 0162 1]           Bit Offset : 00
[0A3h 0163 1]           Access Width : 00
[0A4h 0164 8]           Address : 00000000000000000

[0ACh 0172 12]          PM1A Control Block : <Generic Address Structure>
[0ACh 0172 1]           Space ID : 01 (SystemIO)
[0ADh 0173 1]           Bit Width : 10
[0AEh 0174 1]           Bit Offset : 00
[0AFh 0175 1]           Access Width : 02
[0B0h 0176 8]           Address : 00000000000000404

[0B8h 0184 12]          PM1B Control Block : <Generic Address Structure>
[0B8h 0184 1]           Space ID : 01 (SystemIO)
[0B9h 0185 1]           Bit Width : 00
[0BAh 0186 1]           Bit Offset : 00
[0BBh 0187 1]           Access Width : 00
[0BCh 0188 8]           Address : 00000000000000000

[0C4h 0196 12]          PM2 Control Block : <Generic Address Structure>
[0C4h 0196 1]           Space ID : 01 (SystemIO)
[0C5h 0197 1]           Bit Width : 08
[0C6h 0198 1]           Bit Offset : 00
[0C7h 0199 1]           Access Width : 00
[0C8h 0200 8]           Address : 00000000000000450

[0D0h 0208 12]          PM Timer Block : <Generic Address Structure>
[0D0h 0208 1]           Space ID : 01 (SystemIO)
[0D1h 0209 1]           Bit Width : 20
[0D2h 0210 1]           Bit Offset : 00
[0D3h 0211 1]           Access Width : 03
[0D4h 0212 8]           Address : 00000000000000408

[0DCh 0220 12]          GPE0 Block : <Generic Address Structure>
[0DCh 0220 1]           Space ID : 01 (SystemIO)
[0DDh 0221 1]           Bit Width : 80
[0DEh 0222 1]           Bit Offset : 00
[0DFh 0223 1]           Access Width : 01
[0E0h 0224 8]           Address : 00000000000000420

[0E8h 0232 12]          GPE1 Block : <Generic Address Structure>
[0E8h 0232 1]           Space ID : 01 (SystemIO)
[0E9h 0233 1]           Bit Width : 00
[0EAh 0234 1]           Bit Offset : 00
[0EBh 0235 1]           Access Width : 00
[0ECh 0236 8]           Address : 00000000000000000
```



5.3 ACPI Table Template Generator

The Table Template Generator is used to create examples for each of the supported ACPI tables. It emits code in a format similar to the ACPI data table disassembler, and can be compiled directly via the ACPI data table compiler.

These templates contain examples of each possible subtable as applicable to the particular table. The template can be used as a starting point for actual ACPI table development.

Use "**iasl -T all**" to generate a template for every supported table

Example Template file for ECDDT:

```

/*
 * Intel ACPI Component Architecture
 * iASL Compiler/Disassembler version 20100528
 *
 * Template for [ECDDT] ACPI Table
 * Format: [ByteLength]  FieldName : HexFieldValue
 */

[004]                Signature : "ECDDT"
[004]                Table Length : 00000042
[001]                Revision : 01
[001]                Checksum : 2D
[006]                Oem ID : "INTEL "
[008]                Oem Table ID : "TEMPLATE"
[004]                Oem Revision : 00000001
[004]                Asl Compiler ID : "INTL"
[004]                Asl Compiler Revision : 20100528

[012]                Command/Status Register : <Generic Address Structure>
[001]                Space ID : 01 (SystemIO)
[001]                Bit Width : 08
[001]                Bit Offset : 00
[001]                Access Width : 00
[008]                Address : 0000000000000066

[012]                Data Register : <Generic Address Structure>
[001]                Space ID : 01 (SystemIO)
[001]                Bit Width : 08
[001]                Bit Offset : 00
[001]                Access Width : 00
[008]                Address : 0000000000000062

[004]                UID : 00000000
[001]                GPE Number : 09
[001]                Namepath : ""

```



6 Compiler/Disassembler Operation

The iASL compiler is a command line utility that is invoked to translate one or more ASL source files to corresponding AML binary files or the reverse. The syntax of the various command line options is identical across all platforms.

6.1 Command Line Invocation

The general command line syntax is as follows:

```
iasl [options] file1, file2, ... fileN
```

6.2 Wildcard Support

Wildcards are supported on all platforms.

On Windows, wildcard support is implemented within the compiler. For other platforms, it is expected that the shell or command line interpreter will automatically expand wildcards into the **argv** array that is passed to the compiler **main()**.



6.3 Command Line Options

All compiler options are specified using the single '-' (minus) prefix, regardless of the platform of operation. These options are summarized below, and described in detail after.

```

General:
  -@ <file>          Specify command file
  -I <dir>           Specify additional include directory
  -p <prefix>       Specify path/filename prefix for all output files
  -v                Display compiler version
  -vd              Display compiler build date and time
  -vo              Enable optimization comments
  -vs              Disable signon

Help:
  -h                This message
  -hc              Display operators allowed in constant expressions
  -hd              Info for obtaining and disassembling binary ACPI tables
  -hf              Display help for output filename generation
  -hr              Display ACPI reserved method names
  -ht              Display currently supported ACPI table names

Preprocessor:
  -D <symbol>      Define symbol for preprocessor use
  -li              Create preprocessed output file (*.i)
  -P               Preprocess only and create preprocessor output file (*.i)
  -Pn              Disable preprocessor

Errors, Warnings, and Remarks:
  -va              Disable all errors/warnings/remarks
  -ve              Report only errors (ignore warnings and remarks)
  -vi              Less verbose errors and warnings for use with IDEs
  -vr              Disable remarks
  -vw <messageid> Disable specific warning or remark
  -w <1|2|3>       Set warning reporting level
  -we              Report warnings as errors

AML Bytecode Generation (*.aml):
  -oa              Disable all optimizations (compatibility mode)
  -of              Disable constant folding
  -oi              Disable integer optimization to Zero/One/Ones
  -on              Disable named reference string optimization
  -ot              Disable typechecking
  -cr              Disable Resource Descriptor error checking
  -in              Ignore NoOp operators
  -r <revision>    Override table header Revision (1-255)

Listings:
  -l               Create mixed listing file (ASL source and AML) (*.lst)
  -lm              Create hardware summary map file (*.map)
  -ln              Create namespace file (*.nsp)
  -ls              Create combined source file (expanded includes) (*.src)
  -lx              Create cross-reference file (*.xrf)

Firmware Support - C Text Output:
  -tc              Create hex AML table in C (*.hex)
  -sc              Create named hex AML arrays in C (*.c)
  -ic              Create include file in C for -sc symbols (*.h)
  -so              Create namespace AML offset table in C (*.offset.h)

Firmware Support - Assembler Text Output:
  -ta              Create hex AML table in assembler (*.hex)
  -sa              Create named hex AML arrays in assembler (*.asm)
  -ia              Create include file in assembler for -sa symbols (*.inc)

Firmware Support - ASL Text Output:
  -ts              Create hex AML table in ASL (Buffer object) (*.hex)

Legacy-ASL to ASL+ Converter:
  -ca <file>      Convert legacy-ASL source file to new ASL+ file
                  (Original comments are passed through to ASL+ file)

Data Table Compiler:
  -G               Compile custom table that contains generic operators

```




```

-T <sig list>|ALL    Create ACPI table template/example files
-T <count>          Emit DSDT and <count> SSDTs to same file
-vt                Create verbose template files (full disassembly)

AML Disassembler:
-d <f1 f2 ...>     Disassemble or decode binary ACPI tables to file (*.dsl)
                    (Optional, file type is automatically detected)
-da <f1 f2 ...>     Disassemble multiple tables from single namespace
-db                Do not translate Buffers to Resource Templates
-dc <f1 f2 ...>     Disassemble AML and immediately compile it
                    (Obtain DSDT from current system if no input file)
-df                Force disassembler to assume table contains valid AML
-dl                Emit legacy ASL code only (no C-style operators)
-e <f1 f2 ...>     Include ACPI table(s) for external symbol resolution
-fe <file>         Specify external symbol declaration file
-in                Ignore NoOp opcodes
-l                Disassemble to mixed ASL and AML code
-vt                Dump binary table data in hex format within output file

Debug Options:
-bc                Create converter debug file (*.cdb)
-bf                Create debug file (full output) (*.txt)
-bs                Create debug file (parse tree only) (*.txt)
-bp <depth>        Prune ASL parse tree
-bt <type>         Object type to be pruned from the parse tree
-f                Ignore errors, force creation of AML output file(s)
-m <size>         Set internal line buffer size (in Kbytes)
-n                Parse only, no output generation
-oc                Display compile times and statistics
-x <level>        Set debug level for trace output
-z                Do not insert new compiler ID for DataTables

```

6.3.1 General Options

These options affect the compiler globally.

- @<file> Read additional command line options from a command file. The format of this text file is one complete option per line.
- I<dir> Specify an additional directory for include files. The directory that contains the source ASL file is searched first. Then, any additional directories specified via this option are searched. This option may be invoked an unlimited number of times. Directories are searched in the order they appear on the command line.
- p<prefix> Specify the filename prefix used for all output files, including the .AML file. (This option overrides the output filename specified in the DefinitionBlock of the ASL.)
- v Display compiler version in the format <version_number>-<build_bit_width>

Where:

Version_number is in the format YYYYMMDD

Build_bit_width is either 32 or 64 and represents the bit width used to generate the compiler.

- vd Display the compiler build date and time.
- vo Enable optimization comments in the listing file. A remark/comment is made wherever an optimization has been performed.
- vs Disable the compiler signon.



6.3.2 Help

- h Help screen
- hc Display a complete list of all ASL operators that are allowed in constant expressions that can be evaluated at compile time. (This is a list of the Type 3, 4, and 5 operators.)
- hd An info help screen describing the toolchain to obtain and disassemble AML tables.
- hf Display help for AML output file name generation.
- hr Display a list of the ACPI predefined names (reserved names.)
- ht Display a list of all supported ACPI tables, both AML and data table.

6.3.3 Preprocessor

These options affect the integrated preprocessor.

- D <symbol> Define *symbol* for use by the preprocessor.
- li Save the preprocessor output file (*.i) This file contains the output of the preprocessor and is used as input to the main compiler.
- P Preprocess only. Create the preprocessor output file (*.i), but do not invoke the main compiler.
- Pn Disable the preprocessor completely. The input source file is passed directly to the main compiler.

6.3.4 Errors, Warnings, and Remarks

These options affect the output of errors and warnings.

- va Disable all errors/warnings/remarks. The compiler signon and compilation summary information are the only messages.
- ve Report errors only. This option ignores warnings and remarks, and is useful for recompiling disassembled ASL code to quickly determine the actual errors in the code.
- vi Provide less verbose errors and warnings in the format required by the MS VC++ environment. This allows the automatic mapping of errors and warnings to the line of ASL source code that caused the message.
- vr Disable all remark messages.
- vw <id> Disable a specific warning or remark. The <id> is emitted with the message.
- w<1|2|3> Set the warning reporting level.
- we Report all warnings as errors.



6.3.5 AML Bytecode Generation

These options affect the actual AML code that is generated by the compiler.

- oa Disable all optimizations.
- of Disable the constant folding feature.
- oi Disable integer optimizations to the Zero/One/Ones AML opcodes.
- on Disable named reference string optimizations.
- ot Disable compiler typechecking.
- cr Disable Resource Descriptor error checking.
- in Ignore ASL NoOp operators during compilation. -in. Ignore the NoOp operator within the ASL source code. Often, the NoOp operator is used as padding for packages that are changed dynamically by the BIOS. When disassembled and recompiled, these NoOps will cause syntax errors. This option causes the compiler to ignore all NoOp statements.
- r<Rev> Set the revision number of the table header, overriding the existing revision.

6.3.6 Listings

These options control the listings that are produced by the compiler (as the result of the compilation of an ASL file)

- l Create a listing file with the extension .LST. This file contains intermixed ASL source code and AML byte code so that the AML corresponding to each ASL statement can be examined.
- lm Create a mapping file with a map of the GPIO/I2C/SPI/UART hardware connections and the extension .MAP
- ln Create a namespace file with a dump of the ACPI namespace and the extension .NSP
- ls Create a combined source file with the extension .SRC. This file combines all include files into a single, large source file.
- lx Create a cross-reference file – declared namespace objects with all references to each object (*.XRF)

6.3.7 Firmware Support – C Text Output

These options create files that contain the AML in hex format, with a unique label for each line of the original ASL code. This allows the BIOS to easily dynamically access/modify the ACPI table.

- tc Create a hex table file with the extension .HEX. This file contains raw AML byte data in hex table format suitable for inclusion into a C file.
- sc Create AML in a C source code file with the extension .C. This option creates a file with a unique label on the AML code for each line of ASL code.



- ic Create a C header file (.H) that contains external declarations for the symbols produced by the `-sc` option above.
- so This option creates a table of offsets within the output AML table/file for use by the BIOS in order to implement run-time table modification.

6.3.8 Firmware Support – Assembler Text Output

These options create files that contain external declarations for the symbols created by the options in the previous section.

- ta Create a hex table file with the extension .HEX. This file contains raw AML byte data in hex table format suitable for inclusion into an ASM file.
- sa Create AML in an x86 assembly source code file with the extension .ASM. This option creates a file with a unique label on the AML code for each line of ASL code.
- ia Create an ASM include file (.INC) that contains external declarations for the symbols produced by the `-sa` option above.

6.3.9 Firmware Support – ASL Text Output

These options create files that contain the AML code in hex format, in a single array.

- ts Create a hex table file with the extension .HEX. This file contains raw AML byte data in an ASL Buffer object format suitable for inclusion into a ASL file.

6.3.10 Legacy-ASL to ASL+ Converter

- ca <file> Converts a legacy ASL source code file to the ASL+ equivalent. Comments in the original ASL source code are passed through to the new ASL+ file. This feature greatly simplifies the ASL-to-ASL+ conversion process.

6.3.11 Data Table Compiler

- G Compile a custom table containing “generic” operators. The table is assumed to contain a standard ACPI table header at the start.
- T <Sig> Create an ACPI Data Table template file. Use “ALL” for the signature to create templates for all ACPI tables known by iASL.
- T <Count> Create a DSDT and multiple SSDTs in a single file. All elements of ACPI support multiple definition blocks in the input and output files.
- vt Create verbose template file(s). This option creates the template file(s) with the full output of the disassembler, include file offsets and summary raw data.



6.3.12 AML Disassembler

These options are used to invoke and control the behavior of the AML disassembler.

- d <f1 f2...> Disassemble or decode a binary ACPI to a file (.DSL). Tables that contain AML code are disassembled back to ASL code. Tables that do not contain AML code are decoded and displayed with a description of each field within the table. Wildcards are supported.
- da <f1 f2...> Disassemble All. Load all files into a single common namespace, then disassemble each. Similar to `-e` option, but disassembles all of the input files. Convenient for disassembling all AML files for a given machine (DSDT plus all SSDTs.)
- db During disassembly, do not disassemble ResourceTemplates. Instead, leave them as disassembled Buffer objects (hex output).
- dc <f1 f2...> Disassemble a binary AML file and immediately compile it.
- df Force the disassembler to assume that the input table contains valid AML. Useful for tables that have a signature other than DSDT or SSDT
- dl Emit legacy AML code only. No ASL+ symbolic operators and expressions will be emitted.
- e <f1 f2...> Include these extra binary AML tables to assist with external symbol resolution. This option is very useful when attempting to disassemble a table that contains cross-table control method invocations. In these cases, it is difficult or impossible to properly disassemble the method invocation without having the definition of the method present (the important missing data is the number of arguments). Wildcards are supported.
- fe <file> Import an external declaration file that defines the external control methods and their required argument counts. This assists the disassembler in producing correct ASL code. This is a workaround for a limitation of AML code where the disassembler often cannot determine the number of arguments required for an external control method and generates incorrect ASL code. Can be used in conjunction with the `-e` option.
- in Ignore NoOp opcodes (0xA3) within the AML code being disassembled. Often, the NoOp opcode is used as padding for packages that are changed dynamically by the BIOS. When disassembled and recompiled, these NoOps will cause syntax errors. This option causes the disassembler to ignore all NoOp opcodes.
- l Disassemble to mixed ASL and corresponding AML.
- vt Dump the full binary table data in hex format within the output file.

6.3.13 Compiler Debug Options

These options are typically only used to debug the compiler/disassembler itself.



- bc For code converter, create a debug file (*.cdb)
- bf Generate a full debug output file with parser state tracing and parse tree dump. This option can create large amounts of data. (*.txt)
- bs Generate a debug output file that includes only a parse tree dump (*.txt)
- bp <depth> Prune <depth> levels from the ASL parse tree. Serious ASL debugging only, used to remove ASL code block in order to locate problem code.
- bt<type> Object types to be removed from the ASL parse tree. Default is Device.
- f Ignore errors, force creation of AML output file(s). Use this option with caution.
- m <size> Set the initial internal line buffer size (in Kbytes). The buffer is automatically expanded as necessary, however.
- n Only parse the ASL file, do not generate an AML output file.
- oc Display compile times and miscellaneous statistics.
- x<level> Set the ACPICA debug level for trace output.
- z For Data Table compilation, do not insert the compiler ID, simply pass through the ID in the original Data Table source code.

6.4 Compiler Output Examples

6.4.1 Input ASL

Example input ASL that is used for the output examples below.

```
DefinitionBlock ("", "DSDT", 2, "Intel", "EXAMPLE", 1)
{
    Name (BSTP, Package() {0,1,2,3})
    Method (_BST)
    {
        Store (BSTP, Debug)
        Return (BSTP)
    }
}
```



6.4.2 Output of `-tc` (make C hex table) Option

This is the output of the `-tc` option. The entire table is emitted in a single C array.

```
/*
 *
 * Intel ACPI Component Architecture
 * ASL Optimizing Compiler version 20100331 [Mar 31 2010]
 * Copyright (c) 2000 - 2010 Intel Corporation
 * Supports ACPI Specification Revision 4.0
 *
 * Compilation of "dsdt.asl" - Tue Apr 27 14:20:41 2010
 *
 * C source code output
 * AML code block contains 0x45 bytes
 *
 */
unsigned char AmlCode[] =
{
    0x44,0x53,0x44,0x54,0x45,0x00,0x00,0x00, /* 00000000 "DSDTE..." */
    0x02,0xED,0x49,0x6E,0x74,0x65,0x6C,0x00, /* 00000008 "..Intel." */
    0x45,0x58,0x41,0x4D,0x50,0x4C,0x45,0x00, /* 00000010 "EXAMPLE." */
    0x01,0x00,0x00,0x00,0x49,0x4E,0x54,0x4C, /* 00000018 "...INTL" */
    0x31,0x03,0x10,0x20,0x08,0x42,0x53,0x54, /* 00000020 "1...BST" */
    0x50,0x12,0x08,0x04,0x00,0x01,0x0A,0x02, /* 00000028 "P....." */
    0x0A,0x03,0x14,0x12,0x5F,0x42,0x53,0x54, /* 00000030 "...BST" */
    0x00,0x70,0x42,0x53,0x54,0x50,0x5B,0x31, /* 00000038 ".pBSTP[1" */
    0xA4,0x42,0x53,0x54,0x50, /* 00000040 ".BSTP" */
};
```



6.4.3 Output of `-sc` (make C source) Option

This is the output of the `-sc` option. The table is emitted in multiple C arrays, approximately one array per “block” of ASL code. For example, one array is emitted per control method.

```

/*
 *
 * Intel ACPI Component Architecture
 * ASL Optimizing Compiler version 20090730 [Aug 14 2009]
 * Copyright (C) 2000 - 2009 Intel Corporation
 * Supports ACPI Specification Revision 4.0
 *
 * Compilation of "dsdt.asl" - Fri Aug 14 14:59:46 2009
 *
 */
/*
 *
 *      1....
 *      2....DefinitionBlock ("", "DSDT", 2, "Intel", "EXAMPLE", 1)
 */
unsigned char    DSDT_EXAMPLE_Header [] =
{
    0x44,0x53,0x44,0x54,0x45,0x00,0x00,0x00, /* 00000000    "DSDTE..." */
    0x02,0xF1,0x49,0x6E,0x74,0x65,0x6C,0x00, /* 00000008    "..Intel." */
    0x45,0x58,0x41,0x4D,0x50,0x4C,0x45,0x00, /* 00000010    "EXAMPLE." */
    0x01,0x00,0x00,0x00,0x49,0x4E,0x54,0x4C, /* 00000018    "...INTL" */
    0x30,0x07,0x09,0x20, /* 0000001C    "0.. " */
};

/*
 *
 *      3....{
 *      4....    Name (BSTP, Package() {0,1,2,3})
 */
unsigned char    DSDT_EXAMPLE_BSTP [] =
{
    0x08,0x42,0x53,0x54,0x50, /* 00000021    ".BSTP" */
    0x12,0x08,0x04,0x00,0x01,0x0A,0x02,0x0A, /* 00000029    "....." */
    0x03, /* 0000002A    "." */
};

/*
 *
 *      5....
 *      6....    Method (_BST)
 */
unsigned char    DSDT_EXAMPLE__BST [] =
{
    0x14,0x12,0x5F,0x42,0x53,0x54,0x00, /* 00000031    ".._BST." */
};

/*
 *
 *      7....    {
 *      8....        Store (BSTP, Debug)
 */
    0x70,0x42,0x53,0x54,0x50,0x5B,0x31, /* 00000038    "pBSTP[1" */
};

/*
 *
 *      9....        Return (BSTP)
 */
    0xA4,0x42,0x53,0x54,0x50, /* 0000003D    ".BSTP" */
};

/*
 *
 *      10....    }
 *      11....}
 *      12....
 */
};

```




6.4.4 Output of `-ic` (make include file) Option

This is the output of the `-ic` option. It creates external declarations for all of the arrays created by the `-sc` option above.

```

/*
 *
 * Intel ACPI Component Architecture
 * ASL Optimizing Compiler version 20090730 [Aug 14 2009]
 * Copyright (C) 2000 - 2009 Intel Corporation
 * Supports ACPI Specification Revision 4.0
 *
 * Compilation of "dsdt.asl" - Fri Aug 14 15:05:34 2009
 *
 */
extern unsigned char    DSDT_EXAMPLE_Header [];
extern unsigned char    DSDT_EXAMPLE_BSTP [];
extern unsigned char    DSDT_EXAMPLE__BST [];

```

6.4.5 Output of `-l` (Listing) Option

This is a standard listing file with intermixed ASL and AML code.

```

Intel ACPI Component Architecture
ASL Optimizing Compiler version 20090730 [Aug 14 2009]
Copyright (C) 2000 - 2009 Intel Corporation
Supports ACPI Specification Revision 4.0

Compilation of "dsdt.asl" - Fri Aug 14 15:08:30 2009

1....
2....DefinitionBlock ("", "DSDT", 2, "Intel", "EXAMPLE", 1)

00000000....44 53 44 54 45 00 00 00    "DSDTE..."
00000008....02 F1 49 6E 74 65 6C 00    "..Intel."
00000010....45 58 41 4D 50 4C 45 00    "EXAMPLE."
00000018....01 00 00 00 49 4E 54 4C    "....INTL"
00000020....30 07 09 20 .....        "0.. "

3....{
4....    Name (BSTP, Package() {0,1,2,3})

[****iasl****]
dsdt.asl    4:    Name (BSTP, Package() {0,1,2,3})
Optimize 6033 -    ^ Integer optimized to single-byte AML
opcode (Zero)

[****iasl****]
dsdt.asl    4:    Name (BSTP, Package() {0,1,2,3})
Optimize 6033 -    ^ Integer optimized to single-byte AML
opcode (One)

00000024....08 42 53 54 50 .....        ".BSTP"
00000029....12 08 04 00 01 0A 02 0A    "....."
00000031....03 .....                "."

5....
6....    Method (_BST)

00000032....14 12 5F 42 53 54 00 ...    ".._BST."

7....    {
8....        Store (BSTP, Debug)

00000039....70 42 53 54 50 5B 31 ...    "pBSTP[1"

9....        Return (BSTP)

```



```

00000040....A4 42 53 54 50 ..... ".BSTP"
      10.... }
      11....}
      12....

Summary of errors and warnings

ASL Optimizing Compiler version 20090730 [Aug 14 2009]
ASL Input: dsdt.asl - 13 lines, 178 bytes, 4 keywords
AML Output: dsdt.aml - 69 bytes, 2 named objects, 2 executable opcodes

Compilation complete. 0 Errors, 0 Warnings, 0 Remarks, 2 Optimizations

```

6.4.6 Output of -lm (Hardware Mapfile) Option

```

Intel ACPI Component Architecture
ASL Optimizing Compiler version 20140828-32 [Sep 19 2014]
Copyright (c) 2000 - 2014 Intel Corporation

```

```

Compilation of "dsdt.dsl" - Fri Sep 19 09:43:52 2014

```

```

Resource Descriptor Connectivity Map
-----

```

```

GPIO Controller: INT33FC \_SB.GPO0 // Intel Baytrail GPIO Controller

Pin Type Direction Polarity Dest_HID Destination
0000 GpioInt -Interrupt- ActiveBoth INTCFD9 \_SB_
0000 GpioInt -Interrupt- ActiveBoth INTCFD9 \_SB_.TBAD
0001 GpioInt -Interrupt- ActiveBoth INTCFD9 \_SB_.TBAD
0002 GpioIo OutputOnly -Field- \_SB_.GPO0.CCU2
0003 GpioIo OutputOnly -Field- \_SB_.GPO0.CCU3
0026 GpioIo InputOnly 80860F14 \_SB_.SDHC
0026 GpioInt -Interrupt- ActiveBoth 80860F14 \_SB_.SDHC
0028 GpioIo OutputOnly 80860F14 \_SB_.SDHC
0029 GpioIo OutputOnly 80860F14 \_SB_.SDHC
0036 GpioIo OutputOnly -No HID- \_SB_.PCI0.OTG1
0041 GpioIo OutputOnly 10EC5640 \_SB_.I2C2.RTEK
005F GpioIo OutputOnly -Field- \_SB_.GPO0.TCON
0060 GpioInt -Interrupt- ActiveBoth INTCFD9 \_SB_.TBAD
0064 GpioIo OutputOnly MCD0001 \MDM_

I2C Controller: 80860F41 \_SB.I2C2 // Intel Baytrail I2C Host Controller

Type Address Speed Dest_HID Destination
I2C 0010 00061A80 INT33BE \_SB_.I2C2.CAM1 // Camera Sensor OV5693
I2C 001C 00061A80 10EC5640 \_SB_.I2C2.RTEK // Realtek I2S Audio Codec
I2C 0048 00061A80 INT33F0 \_SB_.I2C2.CAMB // Camera Sensor MT9M114

SPI Controller: 80860F0E \_SB.SPI1 // Intel SPI Controller

Type Address Speed Dest_HID Destination
SPI 0001 007A1200 AUTH2750 \_SB_.SPI1.FPNT // AuthenTec AES2750

UART Controller: 80860F0A \_SB.URT1 // Intel Atom UART Controller

Type Address Speed Dest_HID Destination
UART 0000 0001C200 UTK0001 \_SB_.URT1.UART
UART 0000 0001C200 OBDA8723 \_SB_.URT1.BTH1

```



6.4.7 Output of `-In` (Namespace Listing) Option

This is a namespace listing file.

```

Intel ACPI Component Architecture
ASL Optimizing Compiler version 20090730 [Aug 14 2009]
Copyright (C) 2000 - 2009 Intel Corporation
Supports ACPI Specification Revision 4.0

Compilation of "dsdt.asl" - Fri Aug 14 15:08:30 2009

Contents of ACPI Namespace

Count  Depth   Name - Type
-----
      1  [1]    _GPE - Scope
      2  [1]    _PR_ - Scope
      3  [1]    _SB_ - Device
      4  [1]    _SI_ - Scope
      5  [1]    _TZ_ - Thermal
      6  [1]    _REV_ - Integer
      7  [1]    _OS_ - String
      8  [1]    _GL_ - Mutex
      9  [1]    _OSI_ - Method
     10  [1]    BSTP - Package      [Initial Length  0x04 elements]
     11  [1]    _BST - Method      [Code Length    0x0011 bytes]

Namespace pathnames

\ _GPE
\ _PR_
\ _SB_
\ _SI_
\ _TZ_
\ _REV_
\ _OS_
\ _GL_
\ _OSI_
\ BSTP
\ _BST

```

6.5 Using the Disassembler

6.5.1 Resolving External Control Methods

Once compiled, AML code does not contain specific information for the number of arguments that a control method requires. This limitation means that the disassembler often cannot determine the number of arguments to parse for externally-defined control methods. The end result of this can be incorrectly generated ASL code that will not compile.

The iASL disassembler provides two mechanisms to workaround this problem:

- 1) The `-e` option allows additional AML tables (typically SSDTs) to be specified in order to resolve control methods.
- 2) The `-fe` option allows an external declaration file to be imported into the disassembly. This file contains the definitions (with argument counts) for the external control methods.

In the example that follows, we show the disassembly of a DSDT that has an associated SSDT. The original ASL code is shown below:

```

DefinitionBlock ("dsdt.aml", "DSDT", 2, "Intel", "Template", 0x00000001)
{

```



```

External (EXTS, MethodObj)
External (MTH1, MethodObj)

Method (MAIN, 0, NotSerialized)
{
    MTH1 (1, 2, 3, 4)
    EXTS (1, 2, 3)
    Return (Zero)
}

DefinitionBlock ("ssdt.aml", "SSDT", 2, "Intel", "Template", 0x00000001)
{
    Method (EXTS, 3, NotSerialized)
    {
        Return (Zero)
    }
}

```

Note that the DSDT invokes two external control methods. MTH1 has 4 arguments and EXTS has 3 arguments. EXTS is defined in the SSDT, but we don't know where MTH1 is defined.

6.5.1.1 Standard Disassembly

In this example, we attempt a simple disassembly of the DSDT. Note that the disassembler cannot resolve the MTH1 and EXTS methods correctly and issues a warning.

➤ **iasl -d dsdt.aml**

```

DefinitionBlock ("dsdt.aml", "DSDT", 2, "Intel", "Template", 0x00000001)
{
    /*
    * iASL Warning: There were 2 external control methods found during
    * disassembly, but additional ACPI tables to resolve these externals
    * were not specified. This resulting disassembler output file may not
    * compile because the disassembler did not know how many arguments
    * to assign to these methods. To specify the tables needed to resolve
    * external control method references, use the one of the following
    * example iASL invocations:
    *     iasl -e <ssdt1.aml ssdt2.aml...> -d <dsdt.aml>
    *     iasl -e <dsdt.aml ssdt2.aml...> -d <ssdt1.aml>
    */
    External (EXTS, MethodObj) // Warning: Unresolved Method, guessing 3
    arguments (may be incorrect, see warning above)
    External (MTH1, MethodObj) // Warning: Unresolved Method, guessing 7
    arguments (may be incorrect, see warning above)

    Method (MAIN, 0, NotSerialized)
    {
        MTH1 (One, 0x02, 0x03, 0x04, EXTS (One, 0x02, 0x03), Return (
            Zero))
    }
}

```

Both the invocation of MTH1 and EXTS have been disassembled incorrectly, because the disassembler does not know the proper number of arguments to parse for either one.



6.5.1.2 Disassembly with `-e` option

In this example, we attempt to use the `-e` option to include the SSDT AML file into the disassembly. The disassembler finds the method EXTS and disassembles it correctly. However, the MTH1 method is still unresolved and is not disassembled correctly. An appropriate warning is issued.

```
➤ iasl -e ssdt.aml -d dsdt.aml
```

```
DefinitionBlock ("dsdt.aml", "DSDT", 2, "Intel", "Template", 0x00000001)
{
    /*
     * iASL Warning: There were 2 external control methods found during
     * disassembly, but only 1 was resolved (1 unresolved). Additional
     * ACPI tables are required to properly disassemble the code. This
     * resulting disassembler output file may not compile because the
     * disassembler did not know how many arguments to assign to the
     * unresolved methods.
     */
    External (MTH1, MethodObj)    // Warning: Unresolved Method, guessing 5
    arguments (may be incorrect, see warning above)

    External (EXTS, MethodObj)    // 3 Arguments

    Method (MAIN, 0, NotSerialized)
    {
        MTH1 (One, 0x02, 0x03, 0x04, EXTS (One, 0x02, 0x03))
        Return (Zero)
    }
}
```

The number of arguments for method MTH1 is still incorrect as it was not found in the SSDT.

6.5.1.3 Disassembly with both `-e` and `-fe` options

In this example, we will attempt to use the `-fe` option to fully resolve all external control methods. First, we create a file named “external.asl” that contains a single line as below:

```
External (MTH1, MethodObj, 4)
```

Note: To generate this file, simply copy the list of unresolved externals from the disassembler output, and add the number of arguments to the end of the `External()` statement for each method.

Now, we will invoke the disassembler using the `-fe` option and specifying “external.asl” as the external declaration import file:

```
➤ iasl -e ssdt.aml -fe external.asl -d dsdt.aml
```

Note that now, all control methods have been resolved and the correct number of arguments for each are known. The DSDT is now disassembled correctly back to the original ASL code:



```

DefinitionBlock ("dsdt.aml", "DSDT", 2, "Intel", "Template", 0x00000001)
{
    /*
     * External declarations that were imported from
     * the reference file [externals.asl]
     */
    External (MTH1, MethodObj)    // 4 Arguments

    External (EXTS, MethodObj)    // 3 Arguments

    Method (MAIN, 0, NotSerialized)
    {
        MTH1 (One, 0x02, 0x03, 0x04)
        EXTS (One, 0x02, 0x03)
        Return (Zero)
    }
}

```

6.6 Integration Into MS VC++ Environment

This section contains instructions for integrating the iASL compiler into MS VC++ 6.0 development environment.

6.6.1 Integration as a Custom Tool

This procedure adds the iASL compiler as a custom tool that can be used to compile ASL source files. The output is sent to the VC output window.

- a) Select Tools->Customize.
- b) Select the "Tools" tab.
- c) Scroll down to the bottom of the "Menu Contents" window. There you will see an empty rectangle. Click in the rectangle to enter a name for this tool.
- d) Type "iASL Compiler" in the box and hit enter. You can now edit the other fields for this new custom tool.
- e) Enter the following into the fields:

Command:	C:\Acpi\iasl.exe
Arguments:	-e "\$(FilePath) "
Initial Directory:	"\$(FileDir) "
Use Output Window:	<Check this option>

"Command" must be the path to wherever you copied the compiler.

"-e" instructs the compiler to produce messages appropriate for VC.



Quotes around FilePath and FileDir enable spaces in filenames.

f) Select "Close".

These steps will add the compiler to the tools menu as a custom tool. By enabling "Use Output Window", you can click on error messages in the output window and the source file and source line will be automatically displayed by VC. Also, you can use F4 to step through the messages and the corresponding source line(s).

6.6.2 Integration into a Project Build

The compiler can be integrated into a project build by using it in the "custom build" step of the project generation. The commands and arguments should be similar to those described above.



7 Generating iASL from Source Code

Generation of the ASL compiler from source code requires these items:

7.1 Required Tools

The *flex* (or *Lex*) lexical analyzer generator

The *Bison* (*Yacc* replacement) (or *Yacc* itself) parser generator

An ANSI C compiler

7.2 Required Source Code

There are three major source code components that are required to generate the compiler

The iASL compiler source

The ACPICA Subsystem source. In particular, the Namespace Manager component is used to create an internal ACPI namespace and symbol table.), and the AML Interpreter is used to evaluate constant expressions.

The Common source for all ACPI components

ACPICA and iASL source code is available at <https://www.acpica.org/downloads/>

iASL Windows binary is available at https://www.acpica.org/downloads/binary_tools.php

The source files appear in these directories by default:

Compiler Source:	Acpica/Source/Compiler
Common Source:	Acpica/Source/Common
Subsystem Source:	Acpica/Source/Components/

