



1

2

## GENIVI Alliance

3GENIVI Document CS00065

4MapViewer

5Component Specification

6Accepted Version 4.0.0

725-01-2017

8Sponsored by:

9GENIVI Alliance

10true

11Accepted

12Abstract:

13This document provides the Component Specification for the MapViewer

14Keywords:

15Navigation, MapViewer

---

<sup>1</sup>Y2013GENIVI Alliance.

22400 Camino Ramon, Suite 375, San Ramon, CA 94583, USA

<sup>3</sup><http://www.genivi.org>Y

2

1This work is licensed under a Creative Commons Attribution-ShareAlike 4.0 International  
2License. Copyright © 2017, trueBMW Car IT GmbH, Continental Automotive GmbH, PCA Peugeot Citroën, XS  
3Embedded GmbH, TomTom International B.V., Alpine Electronics R&D Europe GmbH, AISIN AW CO.LTD.

4

5All rights reserved.

6The information within this document is the property of the true and its use and disclosure are restricted. Elements of  
7GENIVI Alliance specifications may be subject to third party intellectual property rights, including without limitation, pat-  
8ent, copyright or trademark rights (and such third parties may or may not be members of GENIVI Alliance). GENIVI Alli-  
9ance true not responsible and shall not be held responsible in any manner for identifying, failing to identify, or for securing  
10proper access to or use of, any or all such third party intellectual property rights.true

11“”“”

12

13

14

15

16

17GENIVI and the GENIVI Logo are trademarks of GENIVI Alliance in the U.S. and/or other countries. Other company,  
18brand and product names referred to in this document may be trademarks that are claimed as the property of their respective  
19owners.

20trueThis work is licensed under a Creative Commons Attribution-ShareAlike 4.0 International License.

21<http://creativecommons.org/licenses/by-sa/4.0>

22

23

24The above notice and this paragraph must be included on all copies of this document that are made.

25

26

27

GENIVI Alliance  
2400 Camino Ramon, Suite 375  
**San Ramon, CA 94583, USA**

2

**Table of contents**

1

2

31Change History.....4

42Introduction.....5

53Terminology.....6

64Architecture.....7

7 4.1Interfaces.....7

8 4.2Interaction with other Components.....8

95API.....9

10 5.1Git Repository.....9

11 5.2Sequence Diagrams.....9

    5.2.1navigation application browses map.....9

    5.2.2navigation application creates map session.....11

    5.2.3navigation application sets center.....12

    5.2.4navigation application sets map zoom by delta.....13

    5.2.5navigation application shows route.....14

12 5.3Interfaces.....15

13

14

15

## 1 Change History

Version	Date	Author	Change
0.1	27 Feb 2012	Marco Residori (XS Embedded)	Document Created
0.2	19 Mar 2012	Marco Residori (XS Embedded)	Updated sequence diagrams. Updated <i>Interfaces</i> chapter.
0.3	21 Mar 2012	Marco Residori (XS Embedded)	Updated <i>Interfaces</i> chapter.
1.0	22 Mar 2012	Marco Residori (XS Embedded)	System Architecture Team (SAT) approval.
2.0 (beta)	07 Jun 2013	Marco Residori (XS Embedded)	Updated API description. API Version 2.0.
2.0	17 Jun 2013	Marco Residori (XS Embedded)	Updated API description. API fixes: GT-2651. API Version 2.0 ( <i>4emini-final</i> tag)
3.0.0	21 Jan 2014	Marco Residori (XS Embedded)	Updated API description. API Version 3.0.0.
3.0.1	22 May 2014	Marco Residori (XS Embedded)	Updated copyright notes.
3.0.2	30 June 2014	Marco Residori (XS Embedded)	Updated contributors list.
4.0	7 Feb 2017	Philippe COLLIOT (PSA GROUPE)	Refine the document for Franca based API

## 2 Introduction

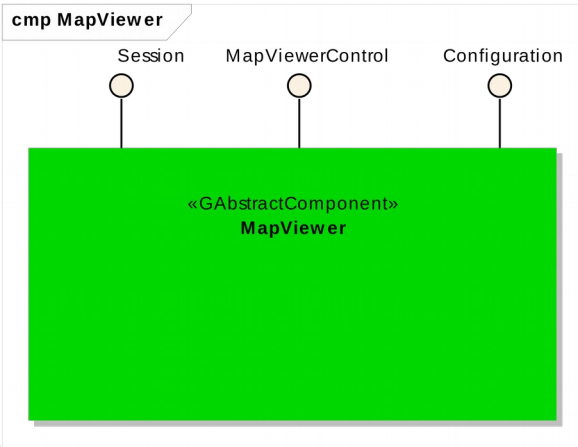
This document describes the MapViewer API.

### 3 Terminology

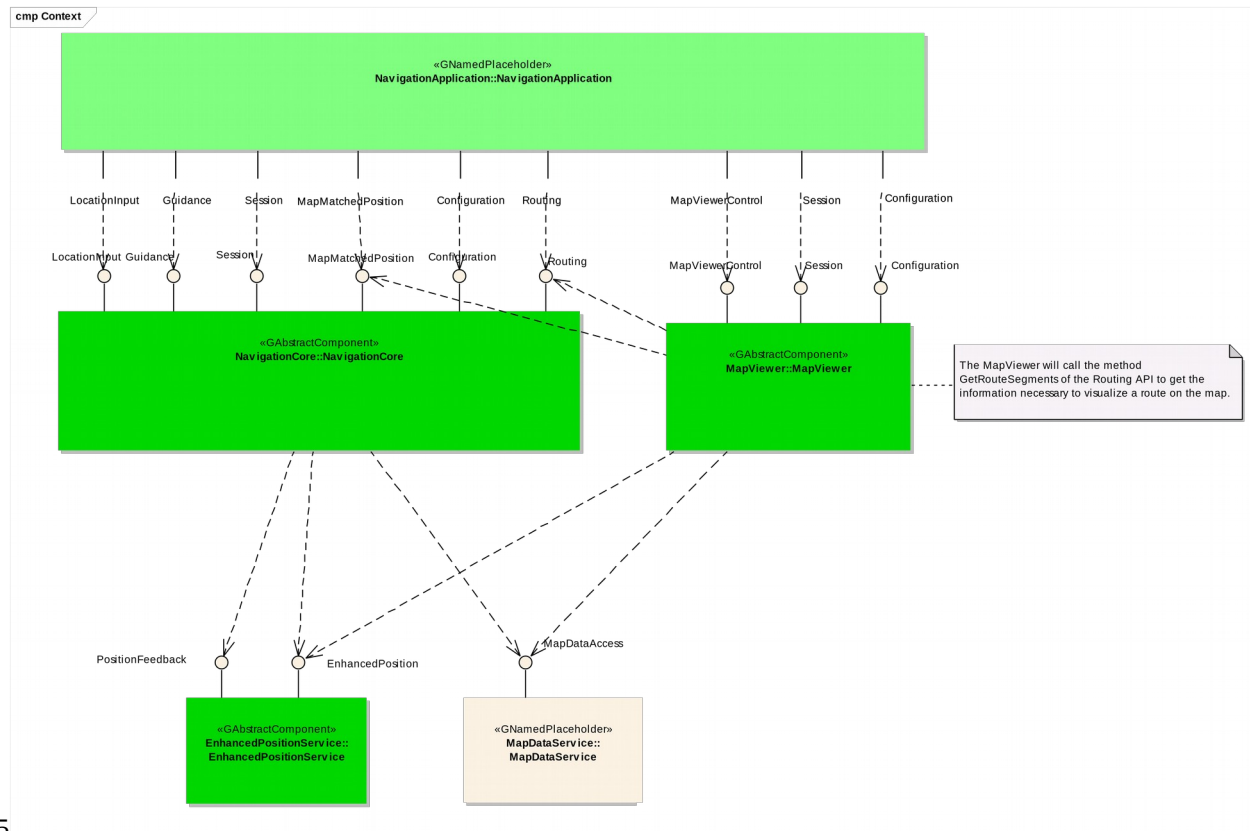
<i>Term</i>	<i>Description</i>
TargetPoint	Point the camera looks at. If the map viewer is set to follow the car position, it coincides with the vehicle position.

# 14 Architecture

## 24.1 Interfaces



### 3.4.2 Interaction with other Components





# 5 API

## 5.1 Git Repository

The MapViewer interfaces can be found in the GENIVI Git repository at:

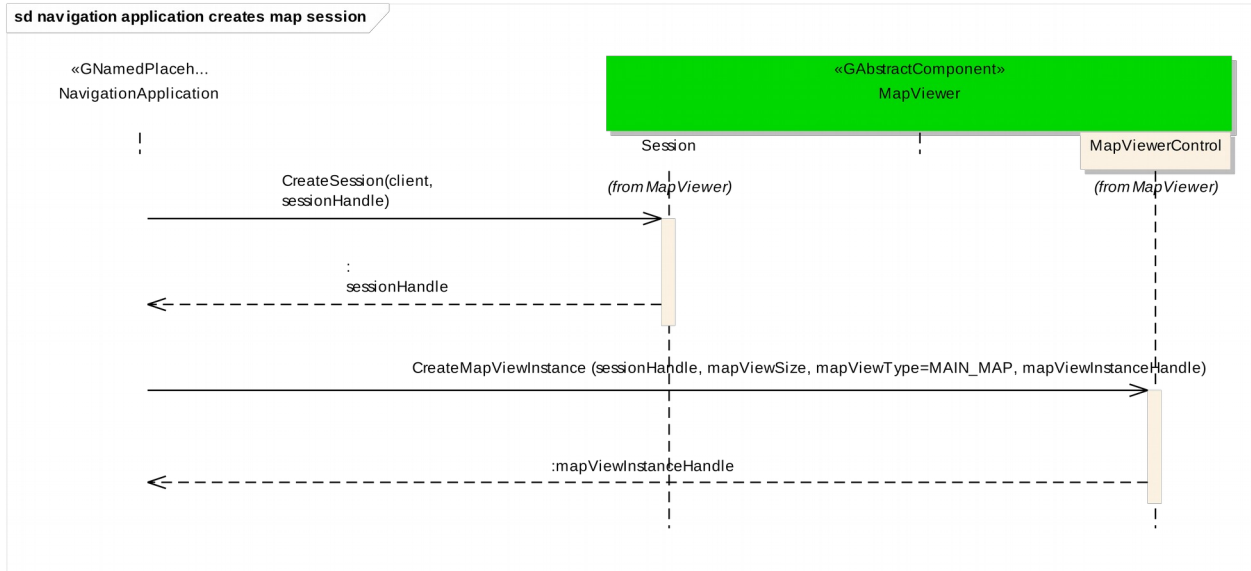
<https://github.com/GENIVI/navigation/tree/master/api/franca/navigation/mapviewer>

## 5.2 Sequence Diagrams

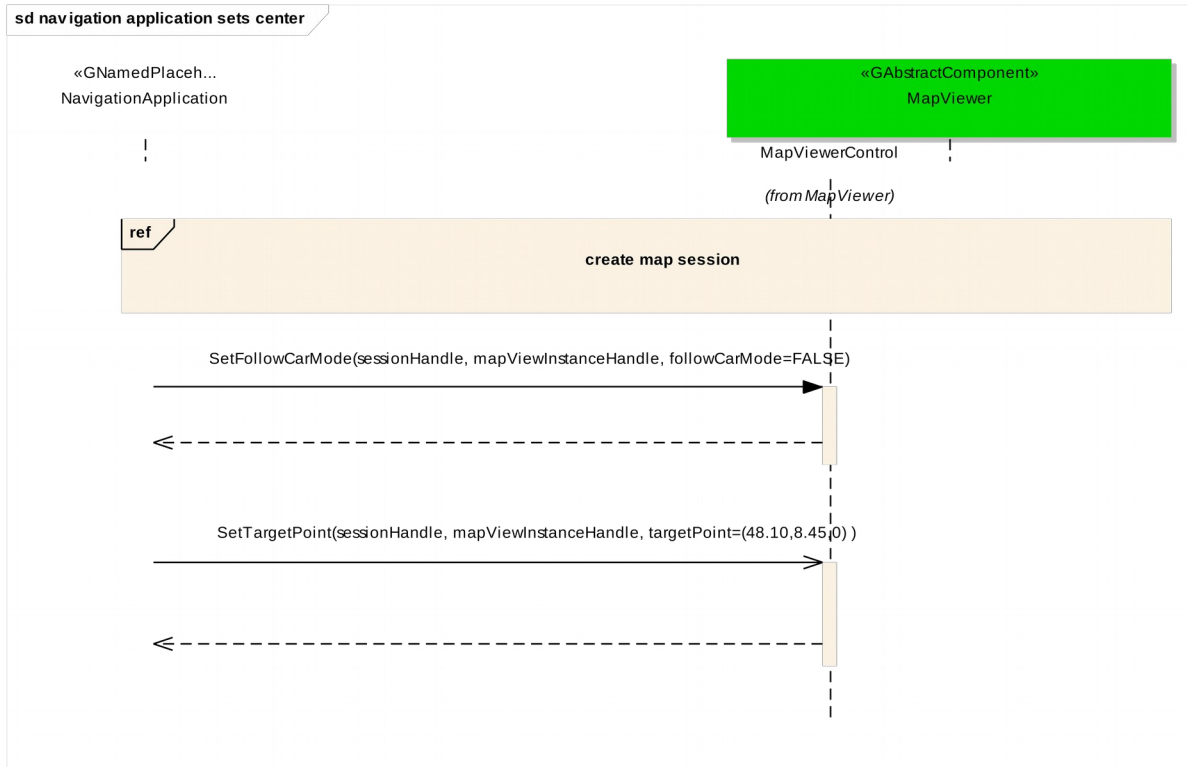
### 5.2.1 navigation application browses map



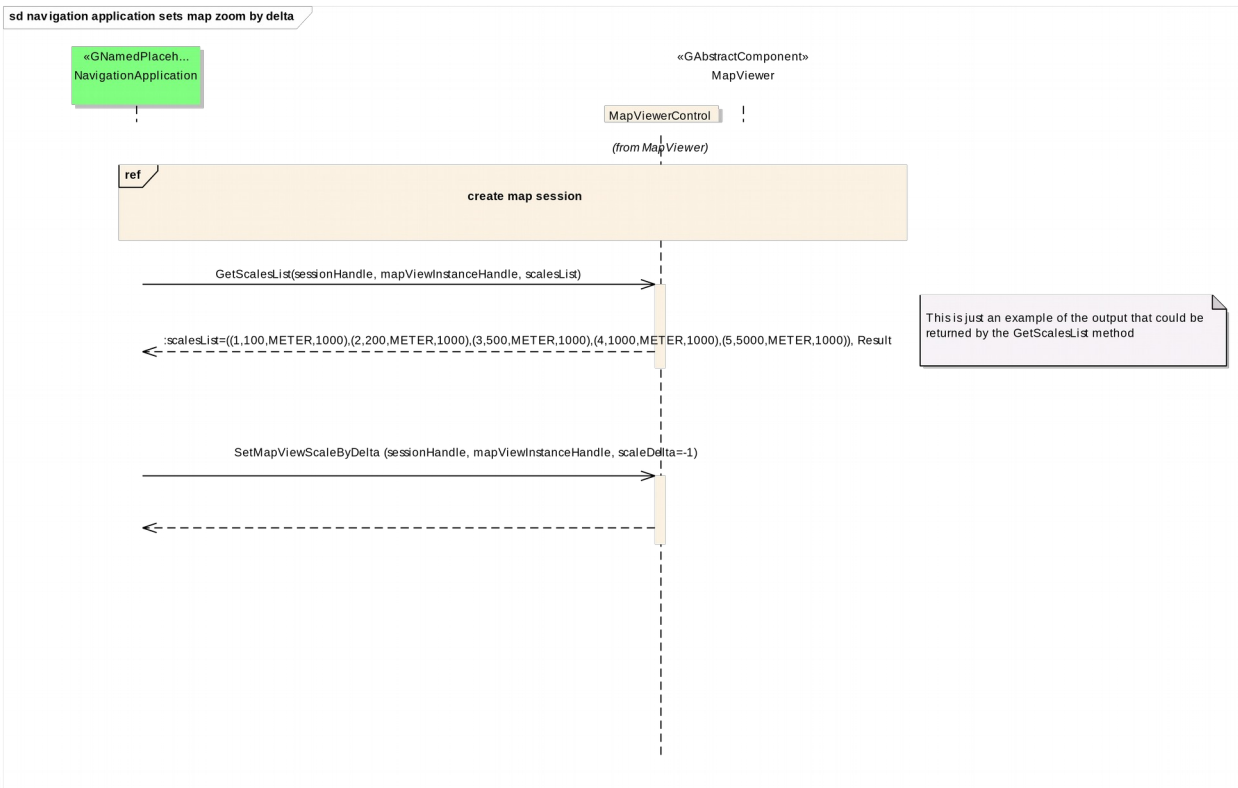
### 5.2.2 navigation application creates map session



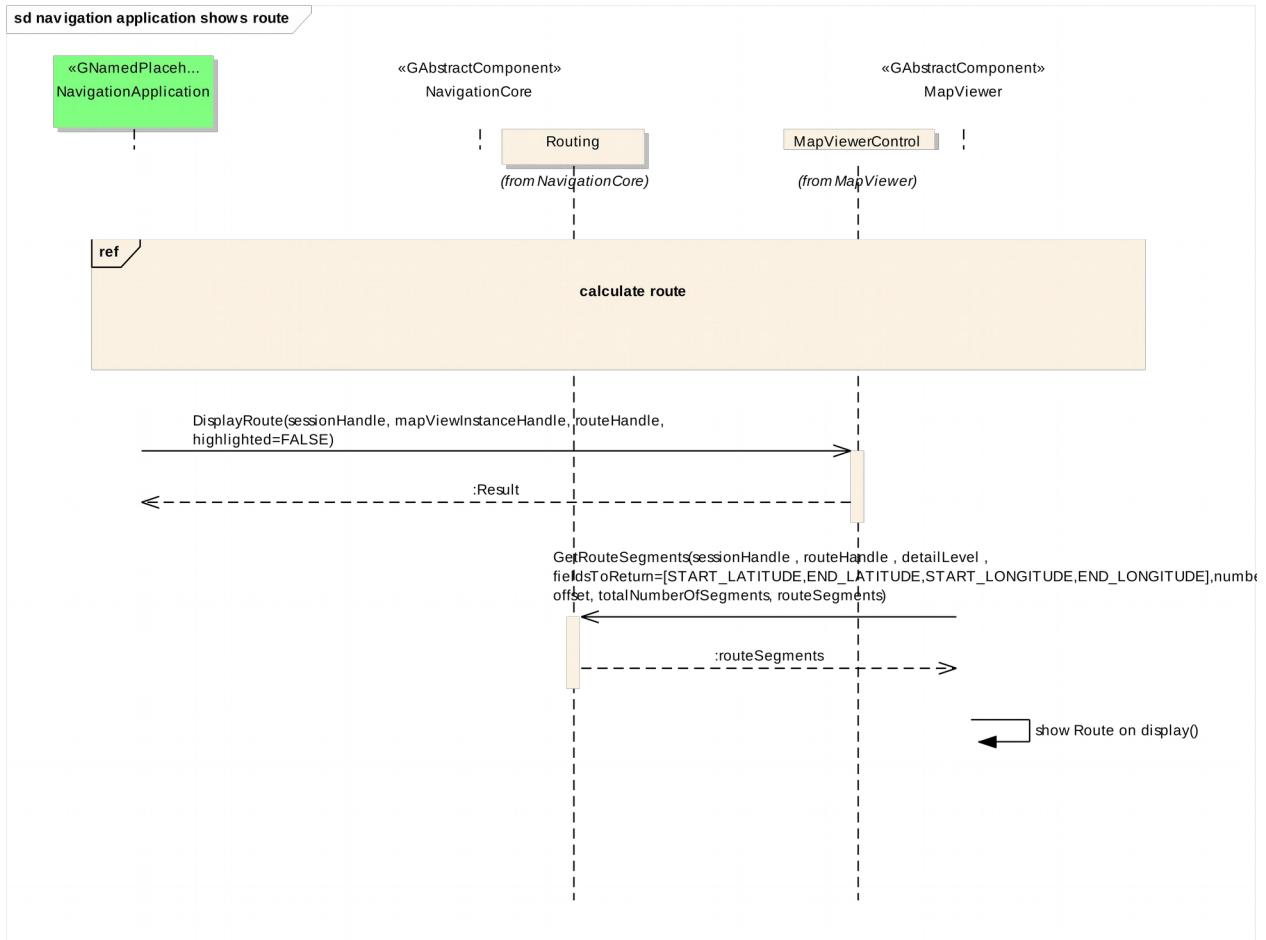
### 2.5.2.3 navigation application sets center



### 5.2.4 navigation application sets map zoom by delta



### 5.2.5 navigation application shows route



### **15.3 Interfaces**

25.4 The following pages describe the interfaces of the MapViewer API.