



1

2

GENIVI Alliance

3GENIVI Document CS00066

4POIService

5Component Specification

6Accepted Version 2.0.0

725-01-2017

8Sponsored by:
9GENIVI Alliance

10true

11Accepted

12**Abstract:**

13This document provides the Component Specification for the POIService

14**Keywords:**

15POI, Search, Navigation

2

1This work is licensed under a Creative Commons Attribution-ShareAlike 4.0 International
2License. Copyright © 2017, trueBMW Car IT GmbH, Continental Automotive GmbH, PCA Peugeot Citroën, XS
3Embedded GmbH, TomTom International B.V., Alpine Electronics R&D Europe GmbH, AISIN AW CO.LTD.

4

5All rights reserved.

6The information within this document is the property of the true and its use and disclosure are restricted. Elements of
7GENIVI Alliance specifications may be subject to third party intellectual property rights, including without limitation, pat-
8ent, copyright or trademark rights (and such third parties may or may not be members of GENIVI Alliance). GENIVI Alli-
9ance true not responsible and shall not be held responsible in any manner for identifying, failing to identify, or for securing
10proper access to or use of, any or all such third party intellectual property rights.true

11“”“”

12

13

14

15

16

17GENIVI and the GENIVI Logo are trademarks of GENIVI Alliance in the U.S. and/or other countries. Other company,
18brand and product names referred to in this document may be trademarks that are claimed as the property of their respective
19owners.

20trueThis work is licensed under a Creative Commons Attribution-ShareAlike 4.0 International License.

21<http://creativecommons.org/licenses/by-sa/4.0>

22

23

24The above notice and this paragraph must be included on all copies of this document that are made.

25

26

27

28

GENIVI Alliance
2400 Camino Ramon, Suite 375
San Ramon, CA 94583, USA

1. Revision History

The following table shows the revision history for this document.

Document Revision History

Version	Date	Author	Change
0.1	24 Oct 2012	Marco Residori (XS Embedded)	Created empty template
0.2	19 Dec 2012	Marco Residori (XS Embedded)	Added architecture diagram. Added sequence Diagrams. Updated APIs, Added Cedric Ranson's use case descriptions.
1.0	19 Dec 2012	Marco Residori (XS Embedded)	Added architecture diagram. Corrected typos.
1.1	3 Feb 2017	Philippe COLLIOT (PSA GROUPE)	Refine the document for Franca based API

2

1

Table of contents

2

31	Introduction.....	5
4	1.1 System Overview.....	5
5	1.2 Component Overview.....	5
62	Terminology.....	6
73	Architecture.....	7
8	3.1 Interfaces.....	7
9	3.2 Interaction with other Components.....	8
104	API.....	9
11	4.1 Git Repository.....	9
12	4.2 Use Cases.....	9
	4.2.1 POI Search.....	9
	4.2.1.1 The HMI displays the list of POI categories.....	9
	4.2.1.2 The user searches for a restaurants around his/her position.....	11
	4.2.1.3 The user is running out of fuel and therefore creates a proximity alert around his/her position to receive a sound alert in case a new fuel station is detected.....	13
	4.2.2 POI Content Access.....	14
	4.2.2.1 The user wants to get a list of car parks with free places around the current position sorted by price.....	14
	4.2.2.2 The user wants to display on the map the location of all his/her Facebook friends around the vehicle position (the profile picture is used to mark a friend's position). .	16
	4.2.2.3 The user wants to navigate to his/her doctor (the one listed in his/her phone contact book) if the office is open.....	17
	4.2.2.4 The user wants to watch a movie. The user requests a list of movies projected in nearby cinemas with description, cinema name and price, all sorted by start time.....	18
	4.2.2.5 The user creates a proximity alert along its route to receive a sound in case of dangerous area.....	19
13	4.3 Interfaces.....	21
14		

11 Introduction

2This document describes the API of the POIService component.

31.1 System Overview

4The GENIVI Software Platform is a platform consisting of standardized middleware, application layer interfaces and frame-
5works defined or adopted by the GENIVI Alliance.

61.2 Component Overview

7The POIService is a software component of the above mentioned GENIVI Software Platform that
8offers POI search to client applications.

12 Terminology

<i>Term</i>	<i>Description</i>
POI	Point of Interest
CAM	Content Access Module

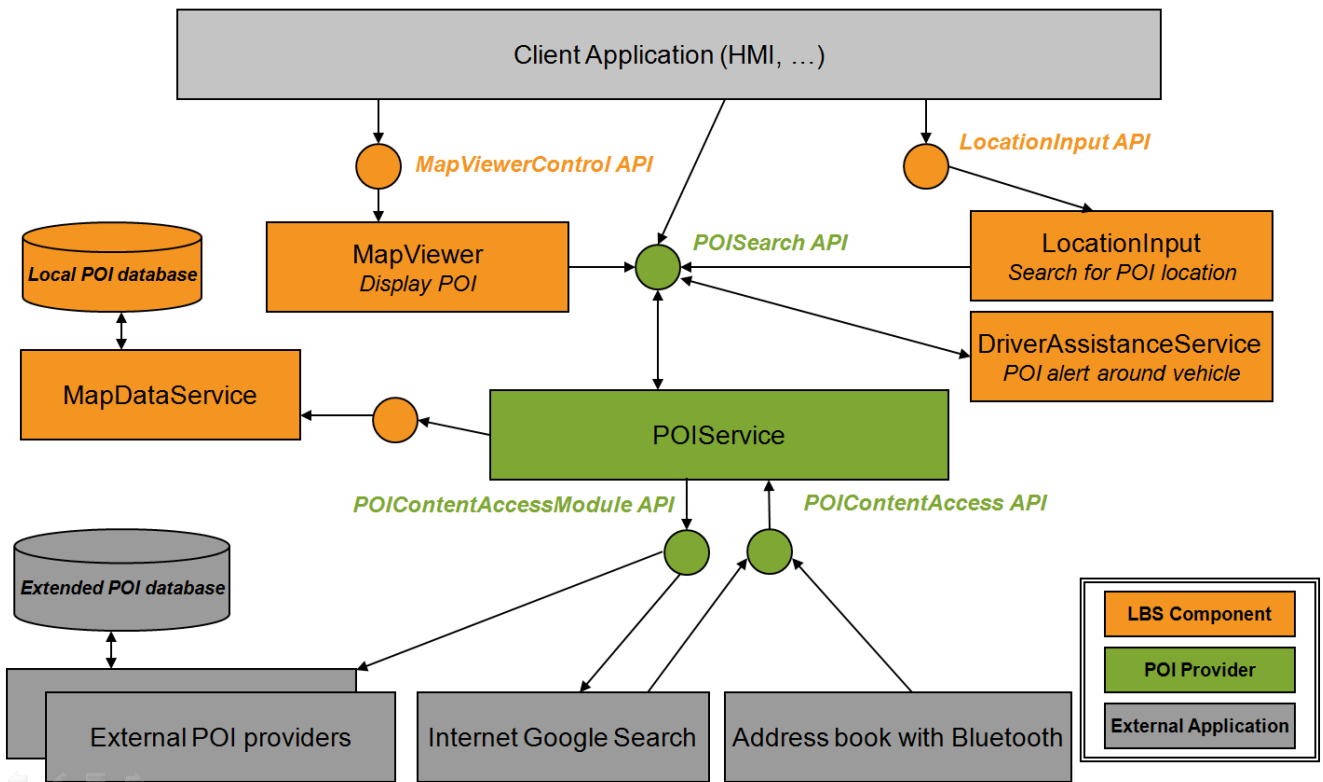
13 Architecture

23.1 Interfaces

- POISearch

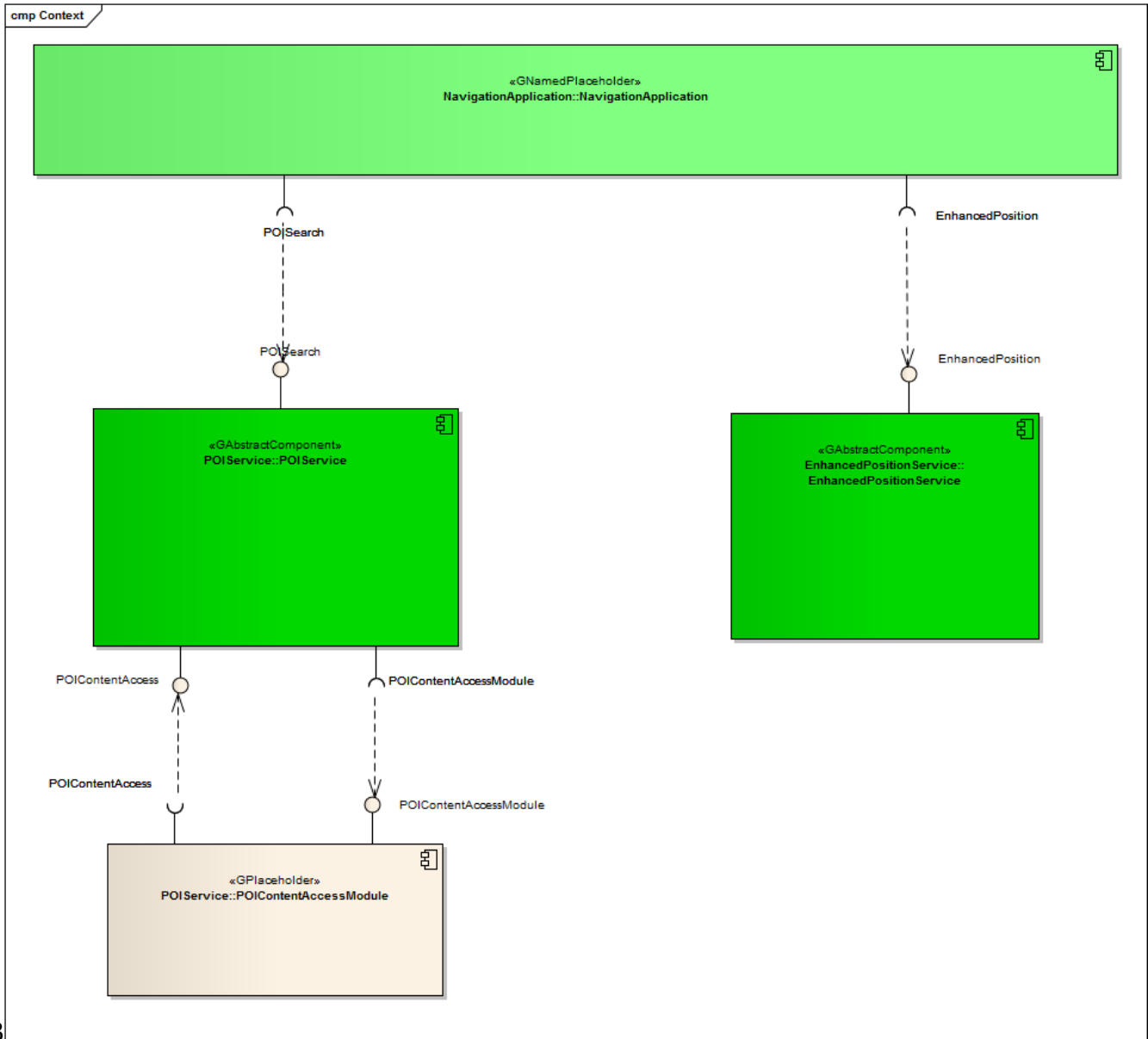
- POIContentAccess

- POIContentAccessModule



2
13.2 Interaction with other Components

2



14 API

24.1 *Git Repository*

3The POIService interfaces can be found in the GENIVI Git repository at:

4<https://github.com/GENIVI/navigation/tree/master/api/franca/navigation/poIService>

54.2 *Use Cases*

64.2.1 *POI Search*

7

84.2.1.1 **The HMI displays the list of POI categories**

10**Description**

12The HMI retrieves the root category from the component (should be ALL_CATEGORIES).

13The HMI retrieves the children categories of the root category.

14For each child category, the HMI retrieves its children:

15If there are no children, the HMI retrieves the category details from the component and displays its name as a searchable category.

16It can also display its visual icon.

17For each child found, the HMI retrieves the children again and then displays the category name if there are no children.

20**Error Management**

21Root category is not available.

22

24**Sequence diagram**

25



2

1

2.4.2.1.2 **The user searches for a restaurants around his/her position**

3

4**Description**

5

6The HMI retrieves the list of POI categories from the **search POI** API.

7The HMI retrieves the vehicle position from the **enhanced position** API.

8The HMI selects restaurant as a category and searches for POI around the vehicle position. It does not provide a search radius.

9The POIService component defines a default radius for the category *restaurant*.

10The POIService component searches for restaurant around the vehicle position within the local database.

11The POIService component provides the list of restaurants sorted by distance. It also provides basic details.

12The HMI browses the list and ask for detailed information for one of the POI.

13The POIService component gets detailed information from the local database.

14The HMI decides to drive to this restaurant.

15The POIService component provides the location of the restaurant.

16

17**Error Management**

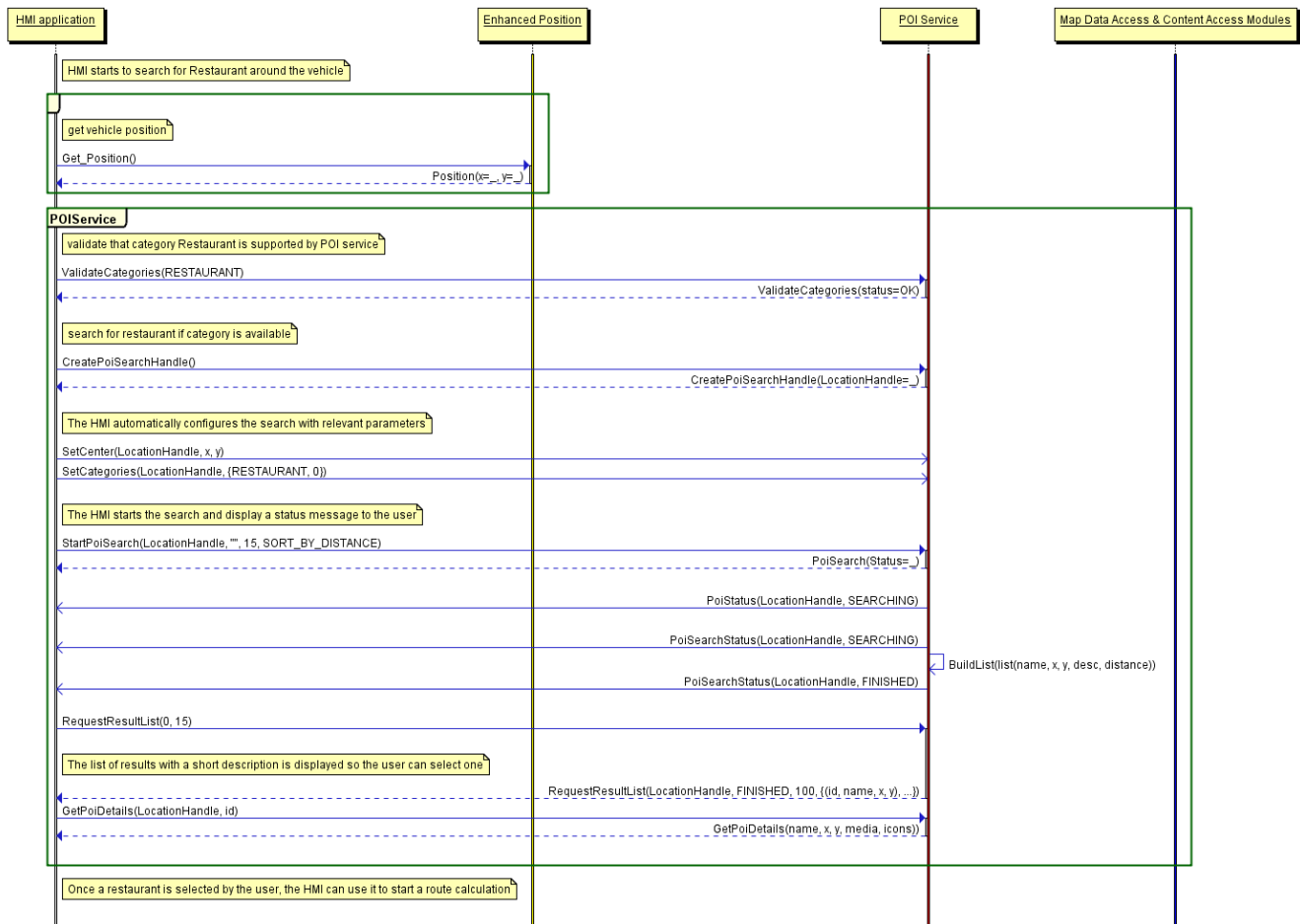
18If the local database access is down, the component returns an error.

20

21**Sequence diagram**

22

23



2

1.4.2.1.3 **The user is running out of fuel and therefore creates a proximity alert around his/her position to receive a sound alert in case a new fuel station is detected**

4 **Preconditions**

6The fuel station is a category that is supported by the local database.

8 **Description**

9The HMI configures a new POI proximity alert for fuel station around the vehicle.

10The HMI retrieves the vehicle position and the vehicle speed from the **enhanced position** API.

11The POIService component defines the search radius of 500 meters.

12The POIService component gets the list of fuel stations around the current position from the local database using **map data access** API.

13A new list of POI is sent to the HMI with all the fuel station that match the alert configuration.

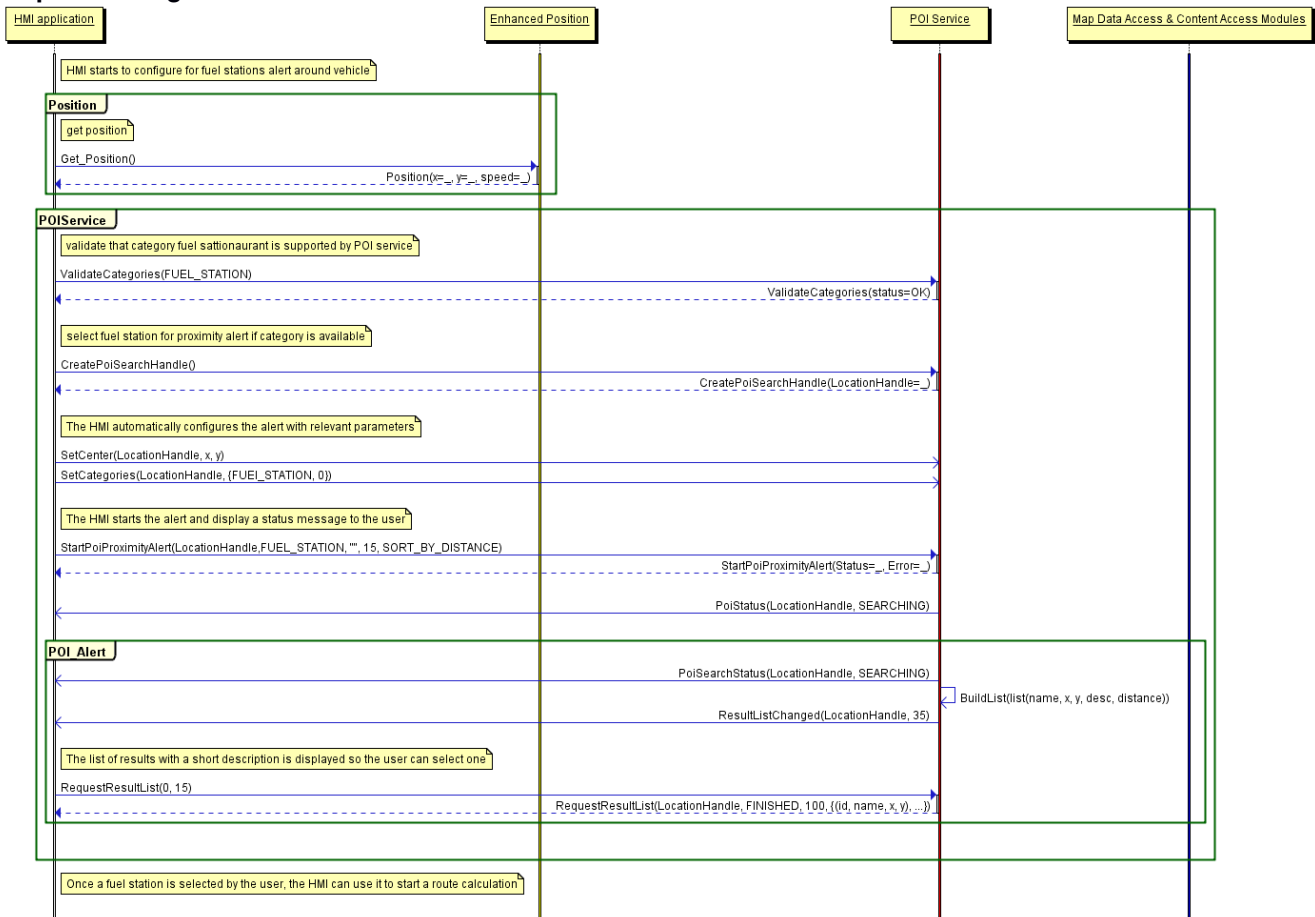
14The HMI plays a sound when a new (non-empty) list of POI is received.

15As soon as new fuel stations are available or current fuel stations are out the search radius, a new list is provided.

17 **Error Management**

18If the local database access is down, the component returns an error.

19 **Sequence diagram**



22

14.2.2 POI Content Access

2

3_{4.2.2.1} 4 **The user wants to get a list of car parks with free places around the current position sorted by price**

6 **Preconditions**

7 A plug-in was already installed in the POI Service component to access an identified online service that provides car park information (price and places left) from the name and coordinates of a car park.

10 **Description**

11 The HMI retrieves the vehicle position from the **enhanced position** API.

12 The HMI retrieves the list of car parks with free places sorted by price around the position from the **search POI** API.

13 The POIService component gets the list of car parks around the current position from the local database using **map data access** API.

14 For each car park name and location found, the POI Service uses **POI content access** API to get free places available and the park price from the plug-in (described below).

16 The POIService component stores the result (all POI found with dynamic content) into the persistent storage to manage the 'connection-down' error. This content is deleted when it gets too old.

18 The POIService component updates each car park attribute with available places and sorts the list by price.

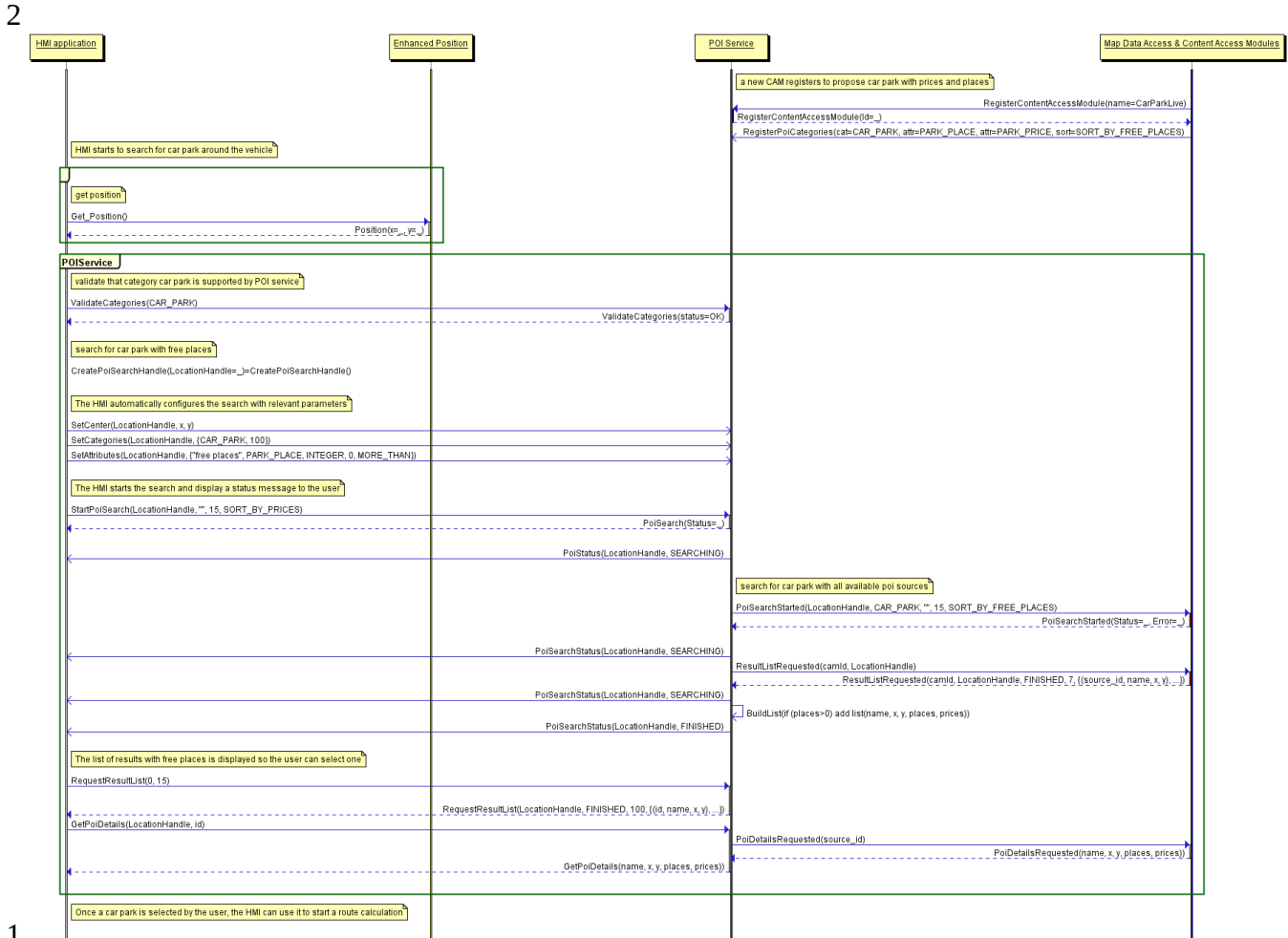
20 **Error Management**

21 If the local database access is down, the component returns an error.

22 If the network connection to the online provider is down, the content access module tries to retrieve latest content from its persistent storage (if any). If this content is too old (depends on CAM policy), it returns an error.

24

25 **Sequence diagram**



1_{4.2.2.2} **The user wants to display on the map the location of all his/her Facebook**
2 **friends around the vehicle position (the profile picture is used to mark a**
3 **friend's position)**

5**Preconditions**

6A plug-in was already installed in the POI Service component to access Facebook services and extract the profile picture and the current address from a list of friends.

8This plug-in also registered a new POI category called **Facebook friends** and sub-category of predefined **User contact**.

9The MapViewer API provides a way to create a custom location on the map with coordinates, name and icons.

11**Description**

12The HMI retrieves the vehicle position from the **enhanced position** API.

13The HMI retrieves the list of Facebook friends from the **search POI** API around the vehicle position.

14POI Service components gets the list of Facebook friends (with photo, name and coordinates) around the current position from the Facebook plug-in **POI content access** API.

16The POI Service component stores the result into the persistent storage to manage the 'connection-down' error.

17This content is deleted when it gets too old.

18For each friend, the POI Service uses **MapViewer** API to update the map with icons.

20**Error Management**

21If the network connection to the online provider is down, the content access module tries to retrieve latest content from its persistent storage (if any). If this content is too old (1 hour), it returns an error.

2

1_{4.2.2.3} **The user wants to navigate to his/her doctor (the one listed in his/her phone contact book) if the office is open**

2

4**Preconditions**

5A plug-in was already installed in the POI Service component to access a doctor's web site. The plug-in extracts the opening times and the doctor's office address.

7A plug-in was already installed in the POI Service component to access the user's smartphone. The plug-in extracts a contact list from a group of names (friend, family, doctor, ...).

9This plug-in created a new POI category called **My Phone Groups** with sub-categories like **friend** or **doctor**.

11**Description**

12The HMI retrieves the doctor's office coordinates and opening times from the user's phone POI group doctor with the **search POI** API.

13The POIService component gets the doctor's office opening time and coordinates from the smartphone contacts plug-in using the **POI content access** API.

15The HMI validates that the opening times match current time and start a route calculation.

16The POIService component gets the doctor's office coordinates from previously stored data.

17The POIService uses **NavigationCore** API to start a route calculation from vehicle position to doctor's office.

19**Error Management**

20If the network connection to the online provider is down, the content access module returns an error.

21

2

1.4.2.2.4 **The user wants to watch a movie. The user requests a list of movies
 2 projected in nearby cinemas with description, cinema name and price, all
 3 sorted by start time**

4Preconditions

5A plug-in was already installed in the POI Service component to access an identified online service that provides cinema information (list of
 6movies, opening times, prices and movies information like review and trailer link) from the name and coordinates of a cinema.

8Description

9The HMI retrieves the vehicle position from the **enhanced position** API.

10The HMI retrieves the list of cinema with movies that starts in less than 1 hour around the current position from the **search POI** API. The list
 11is sorted by start time.

12The POIService component gets the list of cinemas around the current position from the local database using the **map data access** API.

13For each cinema name and location found, the POI Service uses **POI content access** API to get list of movies available with start time,
 14movie information and price from the plug-in (described below).

15The HMI display the list of movies sorted by start time (the sooner the first) with a quick description, a review, the price and the cinema
 16name.

17The rear seat HMI downloads a video from movie trailer link and displays it.

18Depending upon the selected film, the POIServicecomponent gets the cinema coordinates from previously stored data.

19The POIService uses **NavigationCore** API to start a route calculation from vehicle position to the cinema.

21Error Management

22If the local database access is down, the component returns an error

23If the network connection to the online provider is down, the content access module tries to retrieve latest content from its persistent storage

24(if any). If this content is too old (20 minutes), it returns an error.

25

2

1.4.2.2.5 **The user creates a proximity alert along its route to receive a sound in case of dangerous area**

3Preconditions

4A plug-in was already installed in the POI Service component to access an identified online service that provides dangerous area content
5(road conditions, weather, traffic jam, men at work) around a location.

6The dangerous area is a category that is supported by the local database.

7

8Description

9The HMI configures a new POI proximity alert for dangerous events in front of the vehicle.

10The HMI retrieves the vehicle position and speed from the **enhanced position** API.

11The POI component defines the search radius in front of vehicle position depending on the category and the vehicle speed.

12The POIService component gets the list of dangerous areas around the current position from the local database using the **map data access**
13API.

14The POIService component gets the list of dangerous events around the position from content access module according to its defined radius
15and criteria.

16The POIService component updates local events with dynamic contents if necessary.

17A new list of POI is sent to the HMI with all the events (from local and from CAM) that match the alert configuration.

18The HMI plays a sound when a new (non-empty) list of POI is received.

19

20Error Management

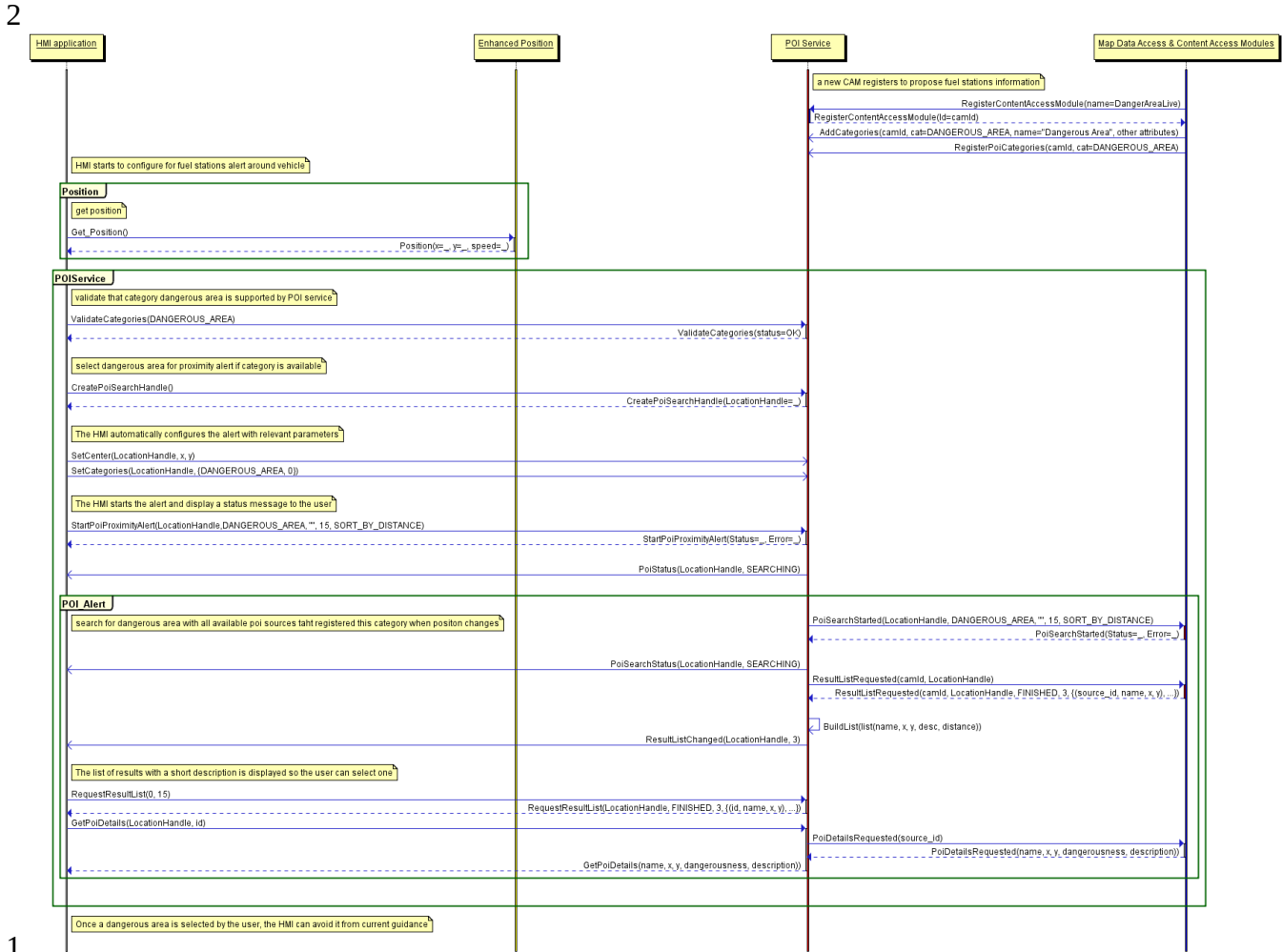
21If the local database access is down, the component returns an error.

22If the network connection to the online provider is down, the content access module tries to retrieve latest content from its persistent storage

23(if any). If this content is too old (more than 2 minutes), it returns an error.

24Sequence diagram

26



14.3 Interfaces

The following pages describe the interfaces of the POIService API.

NavigationCore

Generated by Doxygen 1.8.11

Contents

1	Namespace Documentation	1
1.1	org Module Reference	1
1.2	org::genivi Module Reference	2
1.3	org::genivi::navigation Module Reference	2
1.4	org::genivi::navigation::poiservice Module Reference	2
2	Class Documentation	2
2.1	org::genivi::navigation::poiservice::POIServiceTypes::AttributeDetails Struct Reference	2
2.1.1	Member Data Documentation	2
2.2	org::genivi::navigation::poiservice::POIServiceTypes::AttributeValue Union Reference	3
2.2.1	Member Data Documentation	3
2.3	org::genivi::navigation::poiservice::POIServiceTypes::CAMCategory Struct Reference	3
2.3.1	Member Data Documentation	3
2.4	org::genivi::navigation::poiservice::POIServiceTypes::CAMCategoryUpdate Struct Reference	3
2.4.1	Member Data Documentation	4
2.5	org::genivi::navigation::poiservice::POIServiceTypes::Category Struct Reference	4
2.5.1	Member Data Documentation	4
2.6	org::genivi::navigation::poiservice::POIServiceTypes::CategoryAndLevel Struct Reference	4
2.6.1	Member Data Documentation	4
2.7	org::genivi::navigation::poiservice::POIServiceTypes::CategoryAndName Struct Reference	5
2.7.1	Member Data Documentation	5
2.8	org::genivi::navigation::poiservice::POIServiceTypes::CategoryAndRadius Struct Reference	5
2.8.1	Member Data Documentation	5
2.9	org::genivi::navigation::poiservice::POIServiceTypes::CategoryAndReason Struct Reference	5
2.9.1	Member Data Documentation	6
2.10	org::genivi::navigation::poiservice::POIServiceTypes::CategoryAndStatus Struct Reference	6
2.10.1	Member Data Documentation	6
2.11	org::genivi::navigation::poiservice::POIServiceTypes::CategoryAttribute Struct Reference	6
2.11.1	Member Data Documentation	6

2.12	org::genivi::navigation::poiservice::POIServiceTypes::CategoryDetails Struct Reference	7
2.12.1	Member Data Documentation	7
2.13	org::genivi::navigation::poiservice::POIServiceTypes::CategorySortOption Struct Reference	7
2.13.1	Member Data Documentation	7
2.14	org::genivi::navigation::poiservice::POIServiceTypes::Details Struct Reference	8
2.14.1	Member Data Documentation	8
2.15	org::genivi::navigation::poiservice::POIServiceTypes::Icon Union Reference	8
2.15.1	Member Data Documentation	8
2.16	org::genivi::navigation::poiservice::POIServiceTypes::Media Union Reference	8
2.16.1	Member Data Documentation	9
2.17	org::genivi::navigation::poiservice::POIServiceTypes::Operator Struct Reference	9
2.17.1	Member Data Documentation	9
2.18	org::genivi::navigation::poiservice::POIServiceTypes::PoiAddedDetails Struct Reference	9
2.18.1	Member Data Documentation	9
2.19	org::genivi::navigation::poiservice::POIServiceTypes::PoiAttribute Struct Reference	10
2.19.1	Member Data Documentation	10
2.20	org::genivi::navigation::poiservice::POIServiceTypes::PoiCAMDetails Struct Reference	10
2.20.1	Member Data Documentation	10
2.21	org::genivi::navigation::poiservice::POIConfiguration Interface Reference	11
2.21.1	Detailed Description	11
2.21.2	Member Typedef Documentation	11
2.21.3	Member Enumeration Documentation	11
2.21.4	Member Function Documentation	12
2.21.5	Member Data Documentation	14
2.22	org::genivi::navigation::poiservice::POIConfiguration_client Interface Reference	14
2.22.1	Member Function Documentation	14
2.23	org::genivi::navigation::poiservice::POIContentAccess Interface Reference	14
2.23.1	Detailed Description	14
2.23.2	Member Function Documentation	15
2.24	org::genivi::navigation::poiservice::POIContentAccessModule Interface Reference	16

2.24.1	Detailed Description	16
2.24.2	Member Function Documentation	16
2.25	org::genivi::navigation::poiservice::POIContentAccessModule_client Interface Reference	18
2.25.1	Member Function Documentation	18
2.26	org::genivi::navigation::poiservice::POIServiceTypes::PoiDetails Struct Reference	19
2.26.1	Member Data Documentation	19
2.27	org::genivi::navigation::poiservice::POISearch Interface Reference	19
2.27.1	Detailed Description	20
2.27.2	Member Function Documentation	20
2.28	org::genivi::navigation::poiservice::POISearch_client Interface Reference	22
2.28.1	Member Function Documentation	22
2.29	org::genivi::navigation::poiservice::POIServiceTypes Interface Reference	23
2.29.1	Member Typedef Documentation	24
2.29.2	Member Enumeration Documentation	24
2.30	org::genivi::navigation::poiservice::POIServiceTypes::SearchResult Struct Reference	29
2.30.1	Member Data Documentation	29
2.31	org::genivi::navigation::poiservice::POIServiceTypes::SearchResultDetails Struct Reference	29
2.31.1	Member Data Documentation	30
3	File Documentation	30
3.1	POIConfiguration.fidl File Reference	30
3.2	POIContentAccess.fidl File Reference	30
3.3	POIContentAccessModule.fidl File Reference	30
3.4	POISearch.fidl File Reference	31
3.5	POIServiceTypes.fidl File Reference	31
Index		33

1 Namespace Documentation

1.1 org Module Reference

Modules

- [genivi](#)

1.2 org::genivi Module Reference

Modules

- [navigation](#)

1.3 org::genivi::navigation Module Reference

Modules

- module [poiservice](#)

1.4 org::genivi::navigation::poiservice Module Reference

Classes

- interface [POIConfiguration](#)
- interface [POIConfiguration_client](#)
- interface [POIContentAccess](#)
- interface [POIContentAccessModule](#)
- interface [POIContentAccessModule_client](#)
- interface [POISearch](#)
- interface [POISearch_client](#)
- interface [POIServiceTypes](#)

2 Class Documentation

2.1 org::genivi::navigation::poiservice::POIServiceTypes::AttributeDetails Struct Reference

Public Attributes

- [AttributeID](#) id
- [CategoryID](#) categoryId
- [AttributeType](#) type
- [AttributeValue](#) value
- [OperatorType](#) oper
- Boolean [mandatory](#)

2.1.1 Member Data Documentation

2.1.1.1 [CategoryID](#) org::genivi::navigation::poiservice::POIServiceTypes::AttributeDetails::categoryId

2.1.1.2 [AttributeID](#) org::genivi::navigation::poiservice::POIServiceTypes::AttributeDetails::id

2.1.1.3 [Boolean](#) org::genivi::navigation::poiservice::POIServiceTypes::AttributeDetails::mandatory

2.1.1.4 [OperatorType](#) org::genivi::navigation::poiservice::POIServiceTypes::AttributeDetails::oper

2.1.1.5 [AttributeType](#) org::genivi::navigation::poiservice::POIServiceTypes::AttributeDetails::type

2.1.1.6 [AttributeValue](#) org::genivi::navigation::poiservice::POIServiceTypes::AttributeDetails::value

The documentation for this struct was generated from the following file:

- [POIServiceTypes.fidl](#)

2.2 org::genivi::navigation::poiservice::POIServiceTypes::AttributeValue Union Reference

Public Attributes

- Int32 [intValue](#)
- String [stringValue](#)
- Boolean [boolValue](#)

2.2.1 Member Data Documentation

2.2.1.1 Boolean [org::genivi::navigation::poiservice::POIServiceTypes::AttributeValue::boolValue](#)

2.2.1.2 Int32 [org::genivi::navigation::poiservice::POIServiceTypes::AttributeValue::intValue](#)

2.2.1.3 String [org::genivi::navigation::poiservice::POIServiceTypes::AttributeValue::stringValue](#)

The documentation for this union was generated from the following file:

- [POIServiceTypes.fidl](#)

2.3 org::genivi::navigation::poiservice::POIServiceTypes::CAMCategory Struct Reference

Public Attributes

- [Details](#) [details](#)
- [CategoryAttribute\[\]](#) [attributeList](#)
- [CategorySortOption\[\]](#) [sortOptions](#)

2.3.1 Member Data Documentation

2.3.1.1 [CategoryAttribute \[\]](#) [org::genivi::navigation::poiservice::POIServiceTypes::CAMCategory::attributeList](#)

2.3.1.2 [Details](#) [org::genivi::navigation::poiservice::POIServiceTypes::CAMCategory::details](#)

2.3.1.3 [CategorySortOption \[\]](#) [org::genivi::navigation::poiservice::POIServiceTypes::CAMCategory::sortOptions](#)

The documentation for this struct was generated from the following file:

- [POIServiceTypes.fidl](#)

2.4 org::genivi::navigation::poiservice::POIServiceTypes::CAMCategoryUpdate Struct Reference

Public Attributes

- [CategoryID](#) [id](#)
- [CategoryAttribute\[\]](#) [attributeList](#)
- [CategorySortOption\[\]](#) [sortOptions](#)

2.4.1 Member Data Documentation

2.4.1.1 [CategoryAttribute \[\] org::genivi::navigation::poiservice::POIServiceTypes::CAMCategoryUpdate::attributeList](#)

2.4.1.2 [CategoryID org::genivi::navigation::poiservice::POIServiceTypes::CAMCategoryUpdate::id](#)

2.4.1.3 [CategorySortOption \[\] org::genivi::navigation::poiservice::POIServiceTypes::CAMCategoryUpdate::sortOptions](#)

The documentation for this struct was generated from the following file:

- [POIServiceTypes.fidl](#)

2.5 org::genivi::navigation::poiservice::POIServiceTypes::Category Struct Reference

Public Attributes

- [CategoryDetails details](#)
- [CategoryAttribute\[\] attributeList](#)
- [CategorySortOption\[\] sortOptions](#)

2.5.1 Member Data Documentation

2.5.1.1 [CategoryAttribute \[\] org::genivi::navigation::poiservice::POIServiceTypes::Category::attributeList](#)

2.5.1.2 [CategoryDetails org::genivi::navigation::poiservice::POIServiceTypes::Category::details](#)

2.5.1.3 [CategorySortOption \[\] org::genivi::navigation::poiservice::POIServiceTypes::Category::sortOptions](#)

The documentation for this struct was generated from the following file:

- [POIServiceTypes.fidl](#)

2.6 org::genivi::navigation::poiservice::POIServiceTypes::CategoryAndLevel Struct Reference

Public Attributes

- [CategoryID uniqueId](#)
- [Boolean topLevel](#)

2.6.1 Member Data Documentation

2.6.1.1 [Boolean org::genivi::navigation::poiservice::POIServiceTypes::CategoryAndLevel::topLevel](#)

2.6.1.2 [CategoryID org::genivi::navigation::poiservice::POIServiceTypes::CategoryAndLevel::uniqueId](#)

The documentation for this struct was generated from the following file:

- [POIServiceTypes.fidl](#)

2.7 org::genivi::navigation::poiservice::POIServiceTypes::CategoryAndName Struct Reference

Public Attributes

- CategoryID [uniqueId](#)
- String [name](#)
- Boolean [topLevel](#)

2.7.1 Member Data Documentation

2.7.1.1 String org::genivi::navigation::poiservice::POIServiceTypes::CategoryAndName::name

2.7.1.2 Boolean org::genivi::navigation::poiservice::POIServiceTypes::CategoryAndName::topLevel

2.7.1.3 CategoryID org::genivi::navigation::poiservice::POIServiceTypes::CategoryAndName::uniqueId

The documentation for this struct was generated from the following file:

- [POIServiceTypes.fidl](#)

2.8 org::genivi::navigation::poiservice::POIServiceTypes::CategoryAndRadius Struct Reference

Public Attributes

- CategoryID [id](#)
- UInt32 [radius](#)

2.8.1 Member Data Documentation

2.8.1.1 CategoryID org::genivi::navigation::poiservice::POIServiceTypes::CategoryAndRadius::id

2.8.1.2 UInt32 org::genivi::navigation::poiservice::POIServiceTypes::CategoryAndRadius::radius

The documentation for this struct was generated from the following file:

- [POIServiceTypes.fidl](#)

2.9 org::genivi::navigation::poiservice::POIServiceTypes::CategoryAndReason Struct Reference

Public Attributes

- CategoryID [unique_id](#)
- [UpdateReason](#) [reason](#)

2.9.1 Member Data Documentation

2.9.1.1 **UpdateReason** `org::genivi::navigation::poiservice::POIServiceTypes::CategoryAndReason::reason`

2.9.1.2 **CategoryID** `org::genivi::navigation::poiservice::POIServiceTypes::CategoryAndReason::unique_id`

The documentation for this struct was generated from the following file:

- [POIServiceTypes.fidl](#)

2.10 `org::genivi::navigation::poiservice::POIServiceTypes::CategoryAndStatus` Struct Reference

Public Attributes

- **CategoryID** [uniqueId](#)
- **Boolean** [status](#)

2.10.1 Member Data Documentation

2.10.1.1 **Boolean** `org::genivi::navigation::poiservice::POIServiceTypes::CategoryAndStatus::status`

2.10.1.2 **CategoryID** `org::genivi::navigation::poiservice::POIServiceTypes::CategoryAndStatus::uniqueId`

The documentation for this struct was generated from the following file:

- [POIServiceTypes.fidl](#)

2.11 `org::genivi::navigation::poiservice::POIServiceTypes::CategoryAttribute` Struct Reference

Public Attributes

- **AttributeID** [id](#)
- **String** [name](#)
- **AttributeType** [type](#)
- **Operator[]** [operators](#)

2.11.1 Member Data Documentation

2.11.1.1 **AttributeID** `org::genivi::navigation::poiservice::POIServiceTypes::CategoryAttribute::id`

2.11.1.2 **String** `org::genivi::navigation::poiservice::POIServiceTypes::CategoryAttribute::name`

2.11.1.3 **Operator []** `org::genivi::navigation::poiservice::POIServiceTypes::CategoryAttribute::operators`

2.11.1.4 **AttributeType** `org::genivi::navigation::poiservice::POIServiceTypes::CategoryAttribute::type`

The documentation for this struct was generated from the following file:

- [POIServiceTypes.fidl](#)

2.12 org::genivi::navigation::poiservice::POIServiceTypes::CategoryDetails Struct Reference

Public Attributes

- CategoryID [uniqueId](#)
- StandardCategory [standardCategoryId](#)
- CategoryID[] [parentsId](#)
- Icon [icons](#)
- String [name](#)
- Boolean [topLevel](#)
- String [description](#)
- Media [media](#)

2.12.1 Member Data Documentation

2.12.1.1 String [org::genivi::navigation::poiservice::POIServiceTypes::CategoryDetails::description](#)

2.12.1.2 Icon [org::genivi::navigation::poiservice::POIServiceTypes::CategoryDetails::icons](#)

2.12.1.3 Media [org::genivi::navigation::poiservice::POIServiceTypes::CategoryDetails::media](#)

2.12.1.4 String [org::genivi::navigation::poiservice::POIServiceTypes::CategoryDetails::name](#)

2.12.1.5 CategoryID [] [org::genivi::navigation::poiservice::POIServiceTypes::CategoryDetails::parentsId](#)

2.12.1.6 StandardCategory [org::genivi::navigation::poiservice::POIServiceTypes::CategoryDetails::standardCategoryId](#)

2.12.1.7 Boolean [org::genivi::navigation::poiservice::POIServiceTypes::CategoryDetails::topLevel](#)

2.12.1.8 CategoryID [org::genivi::navigation::poiservice::POIServiceTypes::CategoryDetails::uniqueId](#)

The documentation for this struct was generated from the following file:

- [POIServiceTypes.fidl](#)

2.13 org::genivi::navigation::poiservice::POIServiceTypes::CategorySortOption Struct Reference

Public Attributes

- CategoryID [id](#)
- String [name](#)

2.13.1 Member Data Documentation

2.13.1.1 CategoryID [org::genivi::navigation::poiservice::POIServiceTypes::CategorySortOption::id](#)

2.13.1.2 String [org::genivi::navigation::poiservice::POIServiceTypes::CategorySortOption::name](#)

The documentation for this struct was generated from the following file:

- [POIServiceTypes.fidl](#)

2.14 org::genivi::navigation::poiservice::POIServiceTypes::Details Struct Reference

Public Attributes

- [CategoryID\[\] parentsId](#)
- [Icon icons](#)
- [String name](#)
- [String shortDesc](#)
- [Media media](#)

2.14.1 Member Data Documentation

2.14.1.1 [Icon org::genivi::navigation::poiservice::POIServiceTypes::Details::icons](#)

2.14.1.2 [Media org::genivi::navigation::poiservice::POIServiceTypes::Details::media](#)

2.14.1.3 [String org::genivi::navigation::poiservice::POIServiceTypes::Details::name](#)

2.14.1.4 [CategoryID \[\] org::genivi::navigation::poiservice::POIServiceTypes::Details::parentsId](#)

2.14.1.5 [String org::genivi::navigation::poiservice::POIServiceTypes::Details::shortDesc](#)

The documentation for this struct was generated from the following file:

- [POIServiceTypes.fidl](#)

2.15 org::genivi::navigation::poiservice::POIServiceTypes::Icon Union Reference

Public Attributes

- [ResourceID\[\] id](#)
- [String url](#)

2.15.1 Member Data Documentation

2.15.1.1 [ResourceID \[\] org::genivi::navigation::poiservice::POIServiceTypes::Icon::id](#)

2.15.1.2 [String org::genivi::navigation::poiservice::POIServiceTypes::Icon::url](#)

The documentation for this union was generated from the following file:

- [POIServiceTypes.fidl](#)

2.16 org::genivi::navigation::poiservice::POIServiceTypes::Media Union Reference

Public Attributes

- [ResourceID\[\] id](#)
- [String url](#)

2.16.1 Member Data Documentation

2.16.1.1 ResourceID [] org::genivi::navigation::poiservice::POIServiceTypes::Media::id

2.16.1.2 String org::genivi::navigation::poiservice::POIServiceTypes::Media::url

The documentation for this union was generated from the following file:

- [POIServiceTypes.fidl](#)

2.17 org::genivi::navigation::poiservice::POIServiceTypes::Operator Struct Reference

Public Attributes

- [OperatorType](#) type
- String [name](#)
- [AttributeValue](#) value

2.17.1 Member Data Documentation

2.17.1.1 String org::genivi::navigation::poiservice::POIServiceTypes::Operator::name

2.17.1.2 [OperatorType](#) org::genivi::navigation::poiservice::POIServiceTypes::Operator::type

2.17.1.3 [AttributeValue](#) org::genivi::navigation::poiservice::POIServiceTypes::Operator::value

The documentation for this struct was generated from the following file:

- [POIServiceTypes.fidl](#)

2.18 org::genivi::navigation::poiservice::POIServiceTypes::PoiAddedDetails Struct Reference

Public Attributes

- String [name](#)
- [Coordinate3D](#) [location](#)
- [PoiAttribute](#)[] [attributeList](#)

2.18.1 Member Data Documentation

2.18.1.1 [PoiAttribute](#) [] org::genivi::navigation::poiservice::POIServiceTypes::PoiAddedDetails::attributeList

2.18.1.2 [Coordinate3D](#) org::genivi::navigation::poiservice::POIServiceTypes::PoiAddedDetails::location

2.18.1.3 String org::genivi::navigation::poiservice::POIServiceTypes::PoiAddedDetails::name

The documentation for this struct was generated from the following file:

- [POIServiceTypes.fidl](#)

2.19 org::genivi::navigation::poiservice::POIServiceTypes::PoiAttribute Struct Reference

Public Attributes

- [AttributeID](#) id
- [AttributeType](#) type
- [AttributeValue](#) value

2.19.1 Member Data Documentation

2.19.1.1 [AttributeID](#) org::genivi::navigation::poiservice::POIServiceTypes::PoiAttribute::id

2.19.1.2 [AttributeType](#) org::genivi::navigation::poiservice::POIServiceTypes::PoiAttribute::type

2.19.1.3 [AttributeValue](#) org::genivi::navigation::poiservice::POIServiceTypes::PoiAttribute::value

The documentation for this struct was generated from the following file:

- [POIServiceTypes.fidl](#)

2.20 org::genivi::navigation::poiservice::POIServiceTypes::PoiCAMDetails Struct Reference

Public Attributes

- [POI_ID](#) sourceId
- String name
- CategoryID category
- Coordinate3D location
- UInt16 distance
- [PoiAttribute\[\]](#) attributeList

2.20.1 Member Data Documentation

2.20.1.1 [PoiAttribute \[\]](#) org::genivi::navigation::poiservice::POIServiceTypes::PoiCAMDetails::attributeList

2.20.1.2 [CategoryID](#) org::genivi::navigation::poiservice::POIServiceTypes::PoiCAMDetails::category

2.20.1.3 [UInt16](#) org::genivi::navigation::poiservice::POIServiceTypes::PoiCAMDetails::distance

2.20.1.4 [Coordinate3D](#) org::genivi::navigation::poiservice::POIServiceTypes::PoiCAMDetails::location

2.20.1.5 [String](#) org::genivi::navigation::poiservice::POIServiceTypes::PoiCAMDetails::name

2.20.1.6 [POI_ID](#) org::genivi::navigation::poiservice::POIServiceTypes::PoiCAMDetails::sourceId

The documentation for this struct was generated from the following file:

- [POIServiceTypes.fidl](#)

2.21 org::genivi::navigation::poiservice::POIConfiguration Interface Reference

Public Types

- enum [UnitsOfMeasurementAttribute](#) { [INVALID](#) = 0, [LENGTH](#) = 49 }
- enum [UnitsOfMeasurementValue](#) { [METER](#) = 50, [MILE](#) = 51, [KM](#) = 52, [YARD](#) = 53, [FOOT](#) = 54 }
- enum [Units](#) { [METER](#) = 50, [MILE](#) = 51, [KM](#) = 52, [YARD](#) = 53, [FOOT](#) = 54 }
- enum [TimeFormat](#) { [INVALID](#) = 0, [TWELVEH](#) = 1, [TWENTYFOURH](#) = 2 }
- enum [CoordinatesFormat](#) { [INVALID](#) = 0, [DEGREES](#) = 1, [MINUTES](#) = 2, [SECONDS](#) = 3 }
- typedef [UnitsOfMeasurementValue](#)[] [UnitsOfMeasurementListValue](#)

Public Member Functions

- void [getVersion](#) (out Version version)
- void [setLocale](#) (in String languageCode, in String countryCode, in String scriptCode)
- void [getLocale](#) (out String languageCode, out String countryCode, out String scriptCode)
- void [getSupportedLocales](#) (out Locale localeList)
- void [setTimeFormat](#) (in [TimeFormat](#) format)
- void [getTimeFormat](#) (out [TimeFormat](#) format)
- void [getSupportedTimeFormats](#) (out [TimeFormat](#) timeFormatList)
- void [setCoordinatesFormat](#) (in [CoordinatesFormat](#) coordinatesFormat)
- void [getCoordinatesFormat](#) (out [CoordinatesFormat](#) coordinatesFormat)
- void [getSupportedCoordinatesFormat](#) (out [CoordinatesFormat](#) coordinatesFormatList)
- void [setUnitsOfMeasurement](#) (in [UnitsOfMeasurement](#) unitsOfMeasurementList)
- void [getUnitsOfMeasurement](#) (out [UnitsOfMeasurement](#) unitsOfMeasurementList)
- void [getSupportedUnitsOfMeasurement](#) (out [UnitsOfMeasurementList](#) unitsOfMeasurementList)

Public Attributes

- map_UnitsOfMeasurement [UnitsOfMeasurementAttribute](#) => [UnitsOfMeasurementValue](#)
- map_UnitsOfMeasurementList [UnitsOfMeasurementAttribute](#) => [UnitsOfMeasurementListValue](#)

2.21.1 Detailed Description

#comment : This interface offers methods that implement the POI configuration functionality of a navigation system.

2.21.2 Member Typedef Documentation

2.21.2.1 typedef [UnitsOfMeasurementValue](#) [] [org::genivi::navigation::poiservice::POIConfiguration::UnitsOfMeasurementListValue](#)

2.21.3 Member Enumeration Documentation

2.21.3.1 enum [org::genivi::navigation::poiservice::POIConfiguration::CoordinatesFormat](#)

Enumerator

INVALID
DEGREES
MINUTES
SECONDS

2.21.3.2 enum org::genivi::navigation::poiservice::POIConfiguration::TimeFormat

Enumerator

INVALID
TWELVEH
TWENTYFOURH

2.21.3.3 enum org::genivi::navigation::poiservice::POIConfiguration::Units

Enumerator

METER
MILE
KM
YARD
FOOT

2.21.3.4 enum org::genivi::navigation::poiservice::POIConfiguration::UnitsOfMeasurementAttribute

Enumerator

INVALID
LENGTH

2.21.3.5 enum org::genivi::navigation::poiservice::POIConfiguration::UnitsOfMeasurementValue

Enumerator

METER
MILE
KM
YARD
FOOT

2.21.4 Member Function Documentation

2.21.4.1 void org::genivi::navigation::poiservice::POIConfiguration::getCoordinatesFormat (out CoordinatesFormat *coordinatesFormat*)

#comment : Get the coordinates format .

2.21.4.2 void org::genivi::navigation::poiservice::POIConfiguration::getLocale (out String *languageCode*, out String *countryCode*, out String *scriptCode*)

#comment : Get the current language set .

2.21.4.3 void org::genivi::navigation::poiservice::POIConfiguration::getSupportedCoordinatesFormat (out CoordinatesFormat *coordinatesFormatList*)

#comment : Get the supported set of coordinates format .

2.21.4.4 void org::genivi::navigation::poiservice::POIConfiguration::getSupportedLocales (out Locale *localeList*)

#comment : Get the supported set of locales .

2.21.4.5 void org::genivi::navigation::poiservice::POIConfiguration::getSupportedTimeFormats (out TimeFormat *timeFormatList*)

#comment : Get the supported set of time format .

2.21.4.6 void org::genivi::navigation::poiservice::POIConfiguration::getSupportedUnitsOfMeasurement (out UnitsOfMeasurementList *unitsOfMeasurementList*)

#comment : Get the supported set of units of measurement .

2.21.4.7 void org::genivi::navigation::poiservice::POIConfiguration::getTimeFormat (out TimeFormat *format*)

#comment : Get the current time format .

2.21.4.8 void org::genivi::navigation::poiservice::POIConfiguration::getUnitsOfMeasurement (out UnitsOfMeasurement *unitsOfMeasurementList*)

#comment : Get the units of measurement .

2.21.4.9 void org::genivi::navigation::poiservice::POIConfiguration::getVersion (out Version *version*)

#comment : This method returns the API version .

2.21.4.10 void org::genivi::navigation::poiservice::POIConfiguration::setCoordinatesFormat (in CoordinatesFormat *coordinatesFormat*)

#comment : Set the coordinates format.

2.21.4.11 void org::genivi::navigation::poiservice::POIConfiguration::setLocale (in String *languageCode*, in String *countryCode*, in String *scriptCode*)

#comment : Set the current language set. If the language is not supported, the default details will be returned in the native language.

2.21.4.12 void org::genivi::navigation::poiservice::POIConfiguration::setTimeFormat (in TimeFormat *format*)

#comment : Set the time format.

2.21.4.13 void org::genivi::navigation::poiservice::POIConfiguration::setUnitsOfMeasurement (in UnitsOfMeasurement *unitsOfMeasurementList*)

#comment : Set the units of measurement .

2.21.5 Member Data Documentation

2.21.5.1 `map_UnitsOfMeasurement` `org::genivi::navigation::poiservice::POIConfiguration::UnitsOfMeasurementAttribute => UnitsOfMeasurementValue`

2.21.5.2 `map_UnitsOfMeasurementList` `org::genivi::navigation::poiservice::POIConfiguration::UnitsOfMeasurementAttribute => UnitsOfMeasurementListValue`

The documentation for this interface was generated from the following file:

- [POIConfiguration.fidl](#)

2.22 `org::genivi::navigation::poiservice::POIConfiguration_client` Interface Reference

Public Member Functions

- void [configurationChanged](#) (in Settings *changedSettings*)

2.22.1 Member Function Documentation

2.22.1.1 `void org::genivi::navigation::poiservice::POIConfiguration_client::configurationChanged (in Settings changedSettings)`

broadcast #comment : ConfigurationChanged = This signal is sent to the clients when one or more configuration settings changes

The documentation for this interface was generated from the following file:

- [POIConfiguration.fidl](#)

2.23 `org::genivi::navigation::poiservice::POIContentAccess` Interface Reference

Public Member Functions

- void [registerContentAccessModule](#) (in String *moduleName*, out ContentAccessModuleID *camId*)
- void [unRegisterContentAccessModule](#) (in ContentAccessModuleID *camId*)
- void [registerPoiCategories](#) (in ContentAccessModuleID *camId*, in CategoryID *poiCategories*)
- void [updateCategories](#) (in ContentAccessModuleID *camId*, in CAMCategoryUpdate *poiCategories*)
- void [addCategories](#) (in ContentAccessModuleID *camId*, in CAMCategory *poiCategories*, out CategoryID *poiCategoriesId*)
- void [removeCategories](#) (in ContentAccessModuleID *camId*, in CategoryID *poiCategories*)

2.23.1 Detailed Description

#comment : This interface offers a set of common methods for Content Access Modules (CAM). The CAM provide and update POI and categories information from remote sources to the POIService modules.

2.23.2 Member Function Documentation

2.23.2.1 void org::genivi::navigation::poiservice::POIContentAccess::addCategories (in ContentAccessModuleID *camId*, in CAMCategory *poiCategories*, out CategoryID *poiCategoriesId*)

#comment : Add new categories to the POI service component. The CAM provides for each categories the name, the parent categories, the top level attribute, the list of attributes, the icons,

2.23.2.2 void org::genivi::navigation::poiservice::POIContentAccess::registerContentAccessModule (in String *moduleName*, out ContentAccessModuleID *camId*)

#comment : Register to the POI provider module When the CAM registers, it provides a name and then get a unique id. This id must be used everytime the CAM communicates with the POI service component. After the registration is done, the CAM can start to update POI categories and POI attributes as well as registers POI categories to search for.

2.23.2.3 void org::genivi::navigation::poiservice::POIContentAccess::registerPoiCategories (in ContentAccessModuleID *camId*, in CategoryID *poiCategories*)

#comment : Register to the POI provider module the categories you can search for POI. The categories could be predefined one or customized ones. In order to register a customized category, you might need to create it before and add it to the POI service component.

2.23.2.4 void org::genivi::navigation::poiservice::POIContentAccess::removeCategories (in ContentAccessModuleID *camId*, in CategoryID *poiCategories*)

#comment : Remove categories from the POI service component. It could be a predefined or a customized one. Depending on the local database write policy, the CAM might only not be able to remove some categories.

2.23.2.5 void org::genivi::navigation::poiservice::POIContentAccess::unRegisterContentAccessModule (in ContentAccessModuleID *camId*)

#comment : Remove CAM from POI provider module.

2.23.2.6 void org::genivi::navigation::poiservice::POIContentAccess::updateCategories (in ContentAccessModuleID *camId*, in CAMCategoryUpdate *poiCategories*)

#comment : Update categories in the POI service component. It could be a predefined or a customized one. The CAM provides for each categories the list of attributes (mandatories like name or optional) it wants to update. Depending on the local database write policy, the CAM might only be able to update customized attributes for a category and not the predefined ones so some update could be rejected.

The documentation for this interface was generated from the following file:

- [POIContentAccess.fidl](#)

2.24 org::genivi::navigation::poiservice::POIContentAccessModule Interface Reference

Public Member Functions

- void [getVersion](#) (out Version version)
- void [setLocale](#) (in String languageCode, in String countryCode, in String scriptCode)
- void [getLocale](#) (out String languageCode, out String countryCode, out String scriptCode)
- void [getSupportedLocales](#) (out Locale localeList)
- void [getAvailableCategories](#) (out CategoryAndName categories)
- void [getRootCategory](#) (out CategoryID category)
- void [getChildrenCategories](#) (in CategoryID category, out CategoryAndLevel categories)
- void [getParentCategories](#) (in CategoryID category, out CategoryAndLevel categories)
- void [createCategory](#) (in CAMCategory category, out CategoryID unique_id)
- void [removeCategories](#) (in CategoryID categories)
- void [addPOIs](#) (in CategoryID unique_id, in PoiAddedDetails poiList)
- void [removePOIs](#) (in POI_ID ids)
- void [poiSearchStarted](#) (in Handle poiSearchHandle, in UInt16 maxSize, in Coordinate3D location, in CategoryAndRadius poiCategories, in AttributeDetails poiAttributes, in String inputString, in SortOption sort↔ Option)
- void [poiSearchCanceled](#) (in Handle poiSearchHandle)
- void [resultListRequested](#) (in ContentAccessModuleID camId, in Handle poiSearchHandle, in AttributeID attributeList, out SearchStatusState statusValue, out UInt16 resultListSize, out PoiCAMDetails resultList)
- void [poiDetailsRequested](#) (in POI_ID source_id, out SearchResultDetails results)

2.24.1 Detailed Description

#comment : This interface offers methods that implement the POI search functionality of a navigation system.

2.24.2 Member Function Documentation

2.24.2.1 void org::genivi::navigation::poiservice::POIContentAccessModule::addPOIs (in CategoryID *unique_id*, in PoiAddedDetails *poiList*)

#comment : Adds a list of POIs to a category. Because of required time to add it to the database, a signal is emitted when the update is done, that gives the id of the elements added

2.24.2.2 void org::genivi::navigation::poiservice::POIContentAccessModule::createCategory (in CAMCategory *category*, out CategoryID *unique_id*)

#comment : Creates a category by name and return an unique id.

2.24.2.3 void org::genivi::navigation::poiservice::POIContentAccessModule::getAvailableCategories (out CategoryAndName *categories*)

#comment : This method retrieves the list od POI categories available (pre-defined and custom).

2.24.2.4 void org::genivi::navigation::poiservice::POIContentAccessModule::getChildrenCategories (in CategoryID *category*, out CategoryAndLevel *categories*)

#comment : Get the children categories id and type (top level) from the a parent unique id.

2.24.2.5 void org::genivi::navigation::poiservice::POIContentAccessModule::getLocale (out String *languageCode*, out String *countryCode*, out String *scriptCode*)

#comment : Get the current language set for the search by poi provider module.

2.24.2.6 void org::genivi::navigation::poiservice::POIContentAccessModule::getParentCategories (in CategoryID *category*, out CategoryAndLevel *categories*)

#comment : Get the parent categories id and type (top level) from the a unique id.

2.24.2.7 void org::genivi::navigation::poiservice::POIContentAccessModule::getRootCategory (out CategoryID *category*)

#comment : Get the root category id. That would be ALL_CATEGORIES.

2.24.2.8 void org::genivi::navigation::poiservice::POIContentAccessModule::getSupportedLocales (out Locale *localeList*)

#comment : Get the supported set of locales for the search by poi provider module.

2.24.2.9 void org::genivi::navigation::poiservice::POIContentAccessModule::getVersion (out Version *version*)

#comment : This method returns the API version implemented by the content access module.

2.24.2.10 void org::genivi::navigation::poiservice::POIContentAccessModule::poiDetailsRequested (in POI_ID *source_id*, out SearchResultDetails *results*)

#comment : This method retrieves the details associated to one or more POI. It contains the name, the parent categories, the list of attributes, the icons,

2.24.2.11 void org::genivi::navigation::poiservice::POIContentAccessModule::poiSearchCanceled (in Handle *poiSearchHandle*)

#comment : This method cancels the search for the current id.

2.24.2.12 void org::genivi::navigation::poiservice::POIContentAccessModule::poiSearchStarted (in Handle *poiSearchHandle*, in UInt16 *maxSize*, in Coordinate3D *location*, in CategoryAndRadius *poiCategories*, in AttributeDetails *poiAttributes*, in String *inputString*, in SortOption *sortOption*)

#comment : This method is sent by the POI service component to inform all the CAM that a new POI search was started. It provides all the relevant search parameters. Of course the CAM will only be aware of the search if it registers one of the search categories.

2.24.2.13 void org::genivi::navigation::poiservice::POIContentAccessModule::removeCategories (in CategoryID *categories*)

#comment : Removes a list of categories. Because of required time to remove it from the database, a signal is emitted when the deletion is done.

2.24.2.14 void org::genivi::navigation::poiservice::POIContentAccessModule::removePOIs (in POI_ID *ids*)

#comment : Removes a list of POIs to a category. Because of required time to remove it from the database, a signal is emitted when the update is done.

2.24.2.15 void org::genivi::navigation::poiservice::POIContentAccessModule::resultListRequested (in ContentAccessModuleID *camId*, in Handle *poiSearchHandle*, in AttributeID *attributeList*, out SearchStatusState *statusValue*, out UInt16 *resultListSize*, out PoiCAMDetails *resultList*)

#comment : This method provides the poi results list found by the CAM. As the POI unique id is managed by the POI component, the CAM only provides the POI name, the category and coordinates as well as all the relevant detailed information.

2.24.2.16 void org::genivi::navigation::poiservice::POIContentAccessModule::setLocale (in String *languageCode*, in String *countryCode*, in String *scriptCode*)

#comment : Set the current language set for the search by poi provider module. The language defines the poi and categories name and details language. If the language is not supported, the default details will be returned in the native language.

The documentation for this interface was generated from the following file:

- [POIContentAccessModule.fidl](#)

2.25 org::genivi::navigation::poiservice::POIContentAccessModule_client Interface Reference

Public Member Functions

- void [ConfigurationChanged](#) (in Settings *changedSettings*)
- void [CategoriesRemoved](#) (in CategoryID *categories*)
- void [POIAdded](#) (in POI_ID *pois*)
- void [POIRemoved](#) (in POI_ID *pois*)
- void [SearchStatusChanged](#) (in Handle *poiSearchHandle*, in SearchStatusState *statusValue*, in POI_ID *pois*)

2.25.1 Member Function Documentation

2.25.1.1 void org::genivi::navigation::poiservice::POIContentAccessModule_client::CategoriesRemoved (in CategoryID *categories*)

broadcast #comment : CategoriesRemoved = This signal is emitted when a list of categories and associated content has been removed from the database.

2.25.1.2 void org::genivi::navigation::poiservice::POIContentAccessModule_client::ConfigurationChanged (in Settings *changedSettings*)

broadcast #comment : ConfigurationChanged = This signal is sent to the clients when one or more configuration settings changes.

2.25.1.3 void org::genivi::navigation::poiservice::POIContentAccessModule_client::POIAdded (in POI_ID *pois*)

broadcast #comment : POIAdded = This signal is emitted when a list of POIs and associated content has been added to the database. It returns the ids.

2.25.1.4 void org::genivi::navigation::poiservice::POIContentAccessModule_client::POIRemoved (in POI_ID *pois*)

broadcast #comment : POIRemoved = This signal is emitted when a list of POIs and associated content has been removed from the database.

2.25.1.5 void org::genivi::navigation::poiservice::POIContentAccessModule_client::SearchStatusChanged (in Handle *poiSearchHandle*, in SearchStatusState *statusValue*, in POI_ID *pois*)

broadcast #comment : SearchStatusChanged = This signal updates the search or proximity alert status of the specified handle.

The documentation for this interface was generated from the following file:

- [POIContentAccessModule.fidl](#)

2.26 org::genivi::navigation::poiservice::POIServiceTypes::PoiDetails Struct Reference

Public Attributes

- POI_ID [id](#)
- String [name](#)
- Coordinate3D [location](#)

2.26.1 Member Data Documentation

2.26.1.1 POI_ID org::genivi::navigation::poiservice::POIServiceTypes::PoiDetails::id

2.26.1.2 Coordinate3D org::genivi::navigation::poiservice::POIServiceTypes::PoiDetails::location

2.26.1.3 String org::genivi::navigation::poiservice::POIServiceTypes::PoiDetails::name

The documentation for this struct was generated from the following file:

- [POIServiceTypes.fidl](#)

2.27 org::genivi::navigation::poiservice::POISearch Interface Reference

Public Member Functions

- void [getVersion](#) (out Version *version*)
- void [validateCategories](#) (in CategoryID *categories*, out CategoryAndStatus *results*)
- void [getAvailableCategories](#) (out CategoryAndName *categories*)
- void [getRootCategory](#) (out CategoryID *category*)
- void [getChildrenCategories](#) (in CategoryID *category*, out CategoryAndLevel *categories*)
- void [getParentCategories](#) (in CategoryID *category*, out CategoryAndLevel *categories*)
- void [getCategoriesWithStandardCategoryId](#) (in StandardCategory *standardCategoryId*, out CategoryID *categories*)
- void [getCategoriesDetails](#) (in CategoryID *categories*, out Category *results*)
- void [createPoiSearchHandle](#) (out Handle *poiSearchHandle*)

- void `deletePoiSearchHandle` (in Handle `poiSearchHandle`)
- void `setCenter` (in Handle `poiSearchHandle`, in `Coordinate3D` location)
- void `setRouteHandle` (in Handle `poiSearchHandle`, in Handle `sessionHandle`, in Handle `routeHandle`, in `UInt32 startSearchOffset`, in `UInt32 endSearchOffset`)
- void `setCategories` (in Handle `poiSearchHandle`, in `CategoryAndRadius` `poiCategories`)
- void `setAttributes` (in Handle `poiSearchHandle`, in `AttributeDetails` `poiAttributes`)
- void `startPoiSearch` (in Handle `poiSearchHandle`, in `String` `inputString`, in `SortOption` `sortOption`)
- void `cancelPoiSearch` (in Handle `poiSearchHandle`)
- void `startPoiProximityAlert` (in Handle `poiSearchHandle`, in `String` `inputString`, in `SortOption` `sortOption`)
- void `cancelPoiProximityAlert` (in Handle `poiSearchHandle`)
- void `requestResultList` (in Handle `poiSearchHandle`, in `UInt16` `offset`, in `UInt16` `maxWindowSize`, in `AttributeID` `attributeList`, out `SearchStatusState` `statusValue`, out `UInt16` `resultListSize`, out `SearchResult` `resultListWindow`)
- void `getPoiDetails` (in `POI_ID` `id`, out `SearchResultDetails` `results`)

2.27.1 Detailed Description

#comment : This interface offers methods that implement the POI search functionality of a navigation system.

2.27.2 Member Function Documentation

2.27.2.1 void org::genivi::navigation::poiservice::POISearch::cancelPoiProximityAlert (in Handle *poiSearchHandle*)

#comment : This method cancels the search for the current session.

2.27.2.2 void org::genivi::navigation::poiservice::POISearch::cancelPoiSearch (in Handle *poiSearchHandle*)

#comment : This method cancels the search for the current session.

2.27.2.3 void org::genivi::navigation::poiservice::POISearch::createPoiSearchHandle (out Handle *poiSearchHandle*)

#comment : This method creates a new search input and retrieves a handle .

2.27.2.4 void org::genivi::navigation::poiservice::POISearch::deletePoiSearchHandle (in Handle *poiSearchHandle*)

#comment : This method deletes a search input and its associated resources.

2.27.2.5 void org::genivi::navigation::poiservice::POISearch::getAvailableCategories (out *CategoryAndName categories*)

#comment : This method retrieves the list of POI categories available (pre-defined and custom).

2.27.2.6 void org::genivi::navigation::poiservice::POISearch::getCategoriesDetails (in *CategoryID categories*, out *Category results*)

#comment : This method retrieves the details associated to one or more POI categories. It contains the name, the parent categories, the top level attribute, the list of attributes, the icons,

2.27.2.7 void org::genivi::navigation::poiservice::POISearch::getCategoriesWithStandardCategoryId (in *StandardCategory standardCategoryId*, out *CategoryID categories*)

#comment : Get the categories that are marked with the given standard category.

2.27.2.8 void org::genivi::navigation::poiservice::POISearch::getChildrenCategories (in CategoryID *category*, out CategoryAndLevel *categories*)

#comment : Get the children categories id and type (top level) from the a parent unique id.

2.27.2.9 void org::genivi::navigation::poiservice::POISearch::getParentCategories (in CategoryID *category*, out CategoryAndLevel *categories*)

#comment : Get the parent categories id and type (top level) from the a unique id.

2.27.2.10 void org::genivi::navigation::poiservice::POISearch::getPoiDetails (in POI_ID *id*, out SearchResultDetails *results*)

#comment : This method retrieves the details associated to one or more POI. It contains the name, the parent categories, the list of attributes, the icons,

2.27.2.11 void org::genivi::navigation::poiservice::POISearch::getRootCategory (out CategoryID *category*)

#comment : Get the root category id. That would be ALL_CATEGORIES.

2.27.2.12 void org::genivi::navigation::poiservice::POISearch::getVersion (out Version *version*)

#comment : This method returns the API version implemented by the content access module.

2.27.2.13 void org::genivi::navigation::poiservice::POISearch::requestResultList (in Handle *poiSearchHandle*, in UInt16 *offset*, in UInt16 *maxWindowSize*, in AttributeID *attributeList*, out SearchStatusState *statusValue*, out UInt16 *resultListSize*, out SearchResult *resultListWindow*)

#comment : This method gets the poi result list (e.g. after a Search/Scroll call) .

2.27.2.14 void org::genivi::navigation::poiservice::POISearch::setAttributes (in Handle *poiSearchHandle*, in AttributeDetails *poiAttributes*)

#comment : This method set POI attributes (optional) for the current search input and the corresponding result-lists for the current session An attribute is attached to a category.

2.27.2.15 void org::genivi::navigation::poiservice::POISearch::setCategories (in Handle *poiSearchHandle*, in CategoryAndRadius *poiCategories*)

#comment : This method sets the POI categories for the current search input and the corresponding result-lists for the current session .

2.27.2.16 void org::genivi::navigation::poiservice::POISearch::setCenter (in Handle *poiSearchHandle*, in Coordinate3D *location*)

#comment : This method sets the location to start the search around. If a route handle was defined before, it will be replaced by this location.

2.27.2.17 void org::genivi::navigation::poiservice::POISearch::setRouteHandle (in Handle *poiSearchHandle*, in Handle *sessionHandle*, in Handle *routeHandle*, in UInt32 *startSearchOffset*, in UInt32 *endSearchOffset*)

#comment : This method allows to start a POI search along a guided route. The route handle must be valid or the POI search will failed. If a search location was defined before, it will be replaced by the route.

2.27.2.18 void org::genivi::navigation::poiservice::POISearch::startPoiProximityAlert (in Handle *poiSearchHandle*, in String *inputString*, in SortOption *sortOption*)

#comment : This method starts to check for POI around vehicle according to the criteria defined with the unique handle. By default, it will search for POI around vehicle position with default radius defined for each categories. If a route handle was defined, it will search along the route with default categorie's radius.

2.27.2.19 void org::genivi::navigation::poiservice::POISearch::startPoiSearch (in Handle *poiSearchHandle*, in String *inputString*, in SortOption *sortOption*)

#comment : This method sends the search input for the search handle. The search will start with the either the location or the route handle. If no position or route handle were configured, the search will use the vehicle position as center location.

2.27.2.20 void org::genivi::navigation::poiservice::POISearch::validateCategories (in CategoryID *categories*, out CategoryAndStatus *results*)

#comment : This method allows the application to validate that POI categories are supported by the POI component and the Content access modules.

The documentation for this interface was generated from the following file:

- [POISearch.fidl](#)

2.28 org::genivi::navigation::poiservice::POISearch_client Interface Reference

Public Member Functions

- void [categoriesUpdated](#) (in CategoryAndReason *poiCategories*)
- void [poiStatus](#) (in Handle *poiSearchHandle*, in SearchStatusState *statusValue*)
- void [resultListChanged](#) (in Handle *poiSearchHandle*, in UInt16 *resultListSize*)

2.28.1 Member Function Documentation

2.28.1.1 void org::genivi::navigation::poiservice::POISearch_client::categoriesUpdated (in CategoryAndReason *poiCategories*)

broadcast #comment : This signal indicates that one or more POI categories were added, updated or removed.

2.28.1.2 void org::genivi::navigation::poiservice::POISearch_client::poiStatus (in Handle *poiSearchHandle*, in SearchStatusState *statusValue*)

broadcast #comment : This signal updates the search or proximity alert status of the specified handle.

2.28.1.3 void org::genivi::navigation::poiservice::POISearch_client::resultListChanged (in Handle *poiSearchHandle*, in UInt16 *resultListSize*)

broadcast #comment : This signal updates in the poi results list.

The documentation for this interface was generated from the following file:

- [POISearch.fidl](#)

2.29 org::genivi::navigation::poiservice::POIServiceTypes Interface Reference

Classes

- struct [AttributeDetails](#)
- union [AttributeValue](#)
- struct [CAMCategory](#)
- struct [CAMCategoryUpdate](#)
- struct [Category](#)
- struct [CategoryAndLevel](#)
- struct [CategoryAndName](#)
- struct [CategoryAndRadius](#)
- struct [CategoryAndReason](#)
- struct [CategoryAndStatus](#)
- struct [CategoryAttribute](#)
- struct [CategoryDetails](#)
- struct [CategorySortOption](#)
- struct [Details](#)
- union [Icon](#)
- union [Media](#)
- struct [Operator](#)
- struct [PoiAddedDetails](#)
- struct [PoiAttribute](#)
- struct [PoiCAMDetails](#)
- struct [PoiDetails](#)
- struct [SearchResult](#)
- struct [SearchResultDetails](#)

Public Types

- enum [CategoryIDSet](#) : BasicEnum {
[AIRPORT](#) = 1, [SPORTING](#) = 2, [FERRY_TERMINAL](#) = 3, [ENTERTAINMENT](#) = 4,
[HOTEL_MOTEL](#) = 5, [RESTAURANT](#) = 6, [PARKING](#) = 7, [FUEL_STATION](#) = 8,
[SERVICE_AREA](#) = 9, [CAR_REPAIR_SHOP](#) = 10, [CAR_DEALER](#) = 11, [CAR_RENTAL_AGENCY](#) = 12,
[MEDICAL](#) = 13, [SHOPPING](#) = 14, [BUSINESS_AREA](#) = 15, [LANDMARK](#) = 16,
[FLASH_RADAR](#) = 17, [POI_TRUCK](#) = 18, [SANCTUARY](#) = 19, [TOLLBOOTH](#) = 20,
[KIOSK](#) = 21, [WATER_CLOSET](#) = 22, [BANK_AND_FINANCIAL](#) = 23, [TRAVEL](#) = 24,
[TOURIST](#) = 25, [PUBLIC_BUILDING](#) = 26, [RAILWAY_STATION](#) = 27, [DESTINATION_FLAG](#) = 204,
[FAVORITE](#) = 205, [FAVORITE_HOME](#) = 206, [FAVORITE_ADDRESSBOOK](#) = 207, [USER_IMPORT](#) = 208,
[USER_CONTACT](#) = 209, [MOTORWAY_EXIT](#) = 210, [ALL_CATEGORIES](#) = 65535 }
- enum [StandardCategory](#) {
[NOT_STANDARD_CATEGORY](#), [VEHICLE_REPAIR](#) = 1, [PETROL_STATION](#) = 2, [EVS_CHARGING_STATION](#) = 3,
[CONTROLLED_ACCESS_INTERSECTION](#) = 4, [CONTROLLED_ACCESS_ENTRY_EXIT](#) = 5, [CONTROLLED_ACCESS_SMART_IC](#) = 6, [RENT_A_CAR](#) = 7,
[CAR_WASH](#) = 8, [CAR_DEALERSHIP](#) = 9, [MOTOR_CYCLE_DEALERSHIP](#) = 10, [TRUCK_DEALERSHIP](#) = 11,
[PARKING_GARAGE](#) = 12, [OPEN_PARKING](#) = 13, [REST_AREA](#) = 14, [ROAD_ASSISTANCE](#) = 15,
[CAMPING](#) = 16, [CARAVAN_SITE](#) = 17, [COACH_AND_LORRY_PARKING](#) = 18, [MOTORING_ORG_OFFICE](#) = 19,
[CAR_SHIPPING_TERMINAL](#) = 20, [HOTEL_MOTEL](#) = 5, [RESTAURANT](#) = 6, [FAST_FOOD](#) = 23,
[COFFEE_SHOP](#) = 24, [BAR_OR_PUB](#) = 25, [CINEMA](#) = 26, [MUSEUM](#) = 27,
[THEATRE](#) = 28, [LIBRARY](#) = 29, [HOSPITAL](#) = 30, [PHYSICIAN](#) = 31,
[DENTIST](#) = 32, [PHARMACY](#) = 33, [VETERINARIAN_SERVICE](#) = 34, [POLICE_STATION](#) = 35,
[POST_OFFICE](#) = 36, [CITY_HALL](#) = 37, [EMBASSY](#) = 38, [COURT_HOUSE](#) = 39,
[GOVERNMENT_OFFICE](#) = 40, [COMMUNITY_CENTER](#) = 41, [SHOPPING_CENTER](#) = 42, [STORE](#) = 43,
[BANK](#) = 44, [ATM](#) = 45, [CURRENCY_EXCHANGE](#) = 46, [TOURIST_OFFICE](#) = 47,
[TRAVEL_AGENCY](#) = 48, [TOURIST_ATTRACTION](#) = 49, [HISTORICAL_MONUMENT](#) = 50, [NATIONAL_](#)

- PARK = 51,
- CITY_CENTER = 52, HAMLET = 53, ZOO = 54, AMUSEMENT_PARK = 55,
- GOING_OUT = 56, STADIUM = 57, SPORTS_CENTER = 58, RECREATION = 59,
- SKI_RESORT = 60, SWIMMING_POOL = 61, GOLF_COURSE = 62, FERRY_TERMINAL = 3,
- MARINA = 64, HARBOUR = 65, BUSINESS_FACILITY = 66, EXHIBITION_CONFERENCE_CENTER = 67,
- RAILWAY_STATION = 27, PUBLIC_TRANSIT_STOP = 69, PARK_AND_RIDE = 70, AIRPORT = 1,
- AIRLINE_ACCESS = 72, TAXI_STAND = 73, EMERGENCY_CALL_STATION = 74, EMERGENCY_MEDICAL_SERVICE = 75,
- FIRST_AID_POST = 76, FIRE_BRIGADE = 77, PLACE_OF_WORSHIP = 78, EDUCATION = 79,
- CUSTOMS = 80, FRONTIER_CROSSING = 81, TOLL_LOCATION = 82, PUBLIC_RESTROOM = 83,
- PUBLIC_PHONE = 84, KINDERGARTEN = 85, MOUNTAIN_PASS_SUMMIT = 86, SPEED_CAMERA = 87
- }
- enum `AttributeType` { `STRING` = 500, `INTEGER` = 501, `COORDINATES` = 502, `BOOLEAN` = 503 }
- enum `SearchStatusState` : `BasicEnum` { `NOT_STARTED` = 510, `SEARCHING` = 511, `FINISHED` = 512 }
- enum `OperatorType` : `BasicEnum` { `MORE_THAN` = 520, `LESS_THAN` = 521, `EQUAL` = 522 }
- enum `SortOption` { `SORT_DEFAULT` = 560, `SORT_BY_DISTANCE` = 561, `SORT_BY_TIME` = 562, `ATTRIBUTE_CUSTOM` = 563 }
- enum `RouteStatus` { `OFF_ROUTE` = 600, `ON_ROUTE` = 601, `INSIDE_CORRIDOR` = 602 }
- enum `UpdateReason` {
 - `ADDED` = 700, `REMOVED` = 701, `ATTR_ADDED` = 702, `ATTR_MODIFIED` = 703,
 - `ATTR_REMOVED` = 704 }
- enum `ConfigurationChangedReason` { `LOCALES` }
- enum `Settings` {
 - `INVALID` = 0, `UNITS_OF_MEASUREMENT` = 48, `LOCALE` = 37, `TIME_FORMAT` = 3,
 - `COORDINATES_FORMAT` = 6 }
- typedef `UInt32` `POI_ID`
- typedef `UInt32` `ResourceID`
- typedef `UInt32` `AttributeID`
- typedef `UInt8` `ContentAccessModuleID`

2.29.1 Member Typedef Documentation

2.29.1.1 typedef `UInt32` `org::genivi::navigation::poiservice::POIServiceTypes::AttributeID`

2.29.1.2 typedef `UInt8` `org::genivi::navigation::poiservice::POIServiceTypes::ContentAccessModuleID`

2.29.1.3 typedef `UInt32` `org::genivi::navigation::poiservice::POIServiceTypes::POI_ID`

2.29.1.4 typedef `UInt32` `org::genivi::navigation::poiservice::POIServiceTypes::ResourceID`

2.29.2 Member Enumeration Documentation

2.29.2.1 enum `org::genivi::navigation::poiservice::POIServiceTypes::AttributeType`

Enumerator

STRING

INTEGER

COORDINATES

BOOLEAN

2.29.2.2 enum org::genivi::navigation::poiservice::POIServiceTypes::CategoryIDSet : BasicEnum

Enumerator

AIRPORT
SPORTING
FERRY_TERMINAL
ENTERTAINMENT
HOTEL_MOTEL
RESTAURANT
PARKING
FUEL_STATION
SERVICE_AREA
CAR_REPAIR_SHOP
CAR_DEALER
CAR_RENTAL_AGENCY
MEDICAL
SHOPPING
BUSINESS_AREA
LANDMARK
FLASH_RADAR
POI_TRUCK
SANCTUARY
TOLLBOOTH
KIOSK
WATER_CLOSET
BANK_AND_FINANCIAL
TRAVEL
TOURIST
PUBLIC_BUILDING
RAILWAY_STATION
DESTINATION_FLAG
FAVORITE
FAVORITE_HOME
FAVORITE_ADDRESSBOOK
USER_IMPORT
USER_CONTACT
MOTORWAY_EXIT
ALL_CATEGORIES

2.29.2.3 enum org::genivi::navigation::poiservice::POIServiceTypes::ConfigurationChangedReason

Enumerator

LOCALES

2.29.2.4 enum org::genivi::navigation::poiservice::POIServiceTypes::OperatorType : BasicEnum

Enumerator

MORE_THAN

LESS_THAN

EQUAL

2.29.2.5 enum org::genivi::navigation::poiservice::POIServiceTypes::RouteStatus

Enumerator

OFF_ROUTE

ON_ROUTE

INSIDE_CORRIDOR

2.29.2.6 enum org::genivi::navigation::poiservice::POIServiceTypes::SearchStatusState : BasicEnum

Enumerator

NOT_STARTED

SEARCHING

FINISHED

2.29.2.7 enum org::genivi::navigation::poiservice::POIServiceTypes::Settings

Enumerator

INVALID

UNITS_OF_MEASUREMENT

LOCALE

TIME_FORMAT

COORDINATES_FORMAT

2.29.2.8 enum org::genivi::navigation::poiservice::POIServiceTypes::SortOption

Enumerator

SORT_DEFAULT

SORT_BY_DISTANCE

SORT_BY_TIME

ATTRIBUTE_CUSTOM

2.29.2.9 enum org::genivi::navigation::poiservice::POIServiceTypes::StandardCategory

Enumerator

NOT_STANDARD_CATEGORY
VEHICLE_REPAIR
PETROL_STATION
EVS_CHARGING_STATION
CONTROLLED_ACCESS_INTERSECTION
CONTROLLED_ACCESS_ENTRY_EXIT
CONTROLLED_ACCESS_SMART_IC
RENT_A_CAR
CAR_WASH
CAR_DEALERSHIP
MOTOR_CYCLE_DEALERSHIP
TRUCK_DEALERSHIP
PARKING_GARAGE
OPEN_PARKING
REST_AREA
ROAD_ASSISTANCE
CAMPING
CARAVAN_SITE
COACH_AND_LORRY_PARKING
MOTORING_ORG_OFFICE
CAR_SHIPPING_TERMINAL
HOTEL_MOTEL
RESTAURANT
FAST_FOOD
COFFEE_SHOP
BAR_OR_PUB
CINEMA
MUSEUM
THEATRE
LIBRARY
HOSPITAL
PHYSICIAN
DENTIST
PHARMACY
VETERINARIAN_SERVICE
POLICE_STATION
POST_OFFICE
CITY_HALL
EMBASSY
COURT_HOUSE
GOVERNMENT_OFFICE
COMMUNITY_CENTER

SHOPPING_CENTER
STORE
BANK
ATM
CURRENCY_EXCHANGE
TOURIST_OFFICE
TRAVEL_AGENCY
TOURIST_ATTRACTION
HISTORICAL_MONUMENT
NATIONAL_PARK
CITY_CENTER
HAMLET
ZOO
AMUSEMENT_PARK
GOING_OUT
STADIUM
SPORTS_CENTER
RECREATION
SKI_RESORT
SWIMMING_POOL
GOLF_COURSE
FERRY_TERMINAL
MARINA
HARBOUR
BUSINESS_FACILITY
EXHIBITION_CONFERENCE_CENTER
RAILWAY_STATION
PUBLIC_TRANSIT_STOP
PARK_AND_RIDE
AIRPORT
AIRLINE_ACCESS
TAXI_STAND
EMERGENCY_CALL_STATION
EMERGENCY_MEDICAL_SERVICE
FIRST_AID_POST
FIRE_BRIGADE
PLACE_OF_WORSHIP
EDUCATION
CUSTOMS
FRONTIER_CROSSING
TOLL_LOCATION
PUBLIC_RESTROOM
PUBLIC_PHONE
KINDERGARTEN
MOUNTAIN_PASS_SUMMIT
SPEED_CAMERA

2.29.2.10 enum org::genivi::navigation::poiservice::POIServiceTypes::UpdateReason

Enumerator

ADDED
REMOVED
ATTR_ADDED
ATTR_MODIFIED
ATTR_REMOVED

The documentation for this interface was generated from the following file:

- [POIServiceTypes.fidl](#)

2.30 org::genivi::navigation::poiservice::POIServiceTypes::SearchResult Struct Reference

Public Attributes

- [POI_ID](#) id
- [UInt32](#) distance
- [RouteStatus](#) routeStatus
- [PoiAttribute\[\]](#) attributeList

2.30.1 Member Data Documentation

2.30.1.1 [PoiAttribute \[\]](#) org::genivi::navigation::poiservice::POIServiceTypes::SearchResult::attributeList

2.30.1.2 [UInt32](#) org::genivi::navigation::poiservice::POIServiceTypes::SearchResult::distance

2.30.1.3 [POI_ID](#) org::genivi::navigation::poiservice::POIServiceTypes::SearchResult::id

2.30.1.4 [RouteStatus](#) org::genivi::navigation::poiservice::POIServiceTypes::SearchResult::routeStatus

The documentation for this struct was generated from the following file:

- [POIServiceTypes.fidl](#)

2.31 org::genivi::navigation::poiservice::POIServiceTypes::SearchResultDetails Struct Reference

Public Attributes

- [PoiDetails](#) details
- [CategoryID\[\]](#) categories
- [PoiAttribute\[\]](#) attributeList

2.31.1 Member Data Documentation

2.31.1.1 [PoiAttribute \[\] org::genivi::navigation::poiservice::POIServiceTypes::SearchResultDetails::attributeList](#)

2.31.1.2 [CategoryId \[\] org::genivi::navigation::poiservice::POIServiceTypes::SearchResultDetails::categories](#)

2.31.1.3 [PoiDetails org::genivi::navigation::poiservice::POIServiceTypes::SearchResultDetails::details](#)

The documentation for this struct was generated from the following file:

- [POIServiceTypes.fidl](#)

3 File Documentation

3.1 POIConfiguration.fidl File Reference

Classes

- interface [org::genivi::navigation::poiservice::POIConfiguration](#)
- interface [org::genivi::navigation::poiservice::POIConfiguration_client](#)

Modules

- module [org::genivi::navigation::poiservice](#)

3.2 POIContentAccess.fidl File Reference

Classes

- interface [org::genivi::navigation::poiservice::POIContentAccess](#)

Modules

- module [org::genivi::navigation::poiservice](#)

3.3 POIContentAccessModule.fidl File Reference

Classes

- interface [org::genivi::navigation::poiservice::POIContentAccessModule](#)
- interface [org::genivi::navigation::poiservice::POIContentAccessModule_client](#)

Modules

- module [org::genivi::navigation::poiservice](#)

3.4 POISearch.fidl File Reference

Classes

- interface [org::genivi::navigation::poiservice::POISearch](#)
- interface [org::genivi::navigation::poiservice::POISearch_client](#)

Modules

- module [org::genivi::navigation::poiservice](#)

3.5 POIServiceTypes.fidl File Reference

Classes

- interface [org::genivi::navigation::poiservice::POIServiceTypes](#)
- union [org::genivi::navigation::poiservice::POIServiceTypes::Icon](#)
- union [org::genivi::navigation::poiservice::POIServiceTypes::Media](#)
- union [org::genivi::navigation::poiservice::POIServiceTypes::AttributeValue](#)
- struct [org::genivi::navigation::poiservice::POIServiceTypes::Details](#)
- struct [org::genivi::navigation::poiservice::POIServiceTypes::Operator](#)
- struct [org::genivi::navigation::poiservice::POIServiceTypes::CategoryAttribute](#)
- struct [org::genivi::navigation::poiservice::POIServiceTypes::CategorySortOption](#)
- struct [org::genivi::navigation::poiservice::POIServiceTypes::CAMCategory](#)
- struct [org::genivi::navigation::poiservice::POIServiceTypes::CAMCategoryUpdate](#)
- struct [org::genivi::navigation::poiservice::POIServiceTypes::PoiAttribute](#)
- struct [org::genivi::navigation::poiservice::POIServiceTypes::CategoryAndRadius](#)
- struct [org::genivi::navigation::poiservice::POIServiceTypes::PoiDetails](#)
- struct [org::genivi::navigation::poiservice::POIServiceTypes::SearchResultDetails](#)
- struct [org::genivi::navigation::poiservice::POIServiceTypes::SearchResult](#)
- struct [org::genivi::navigation::poiservice::POIServiceTypes::PoiCAMDetails](#)
- struct [org::genivi::navigation::poiservice::POIServiceTypes::AttributeDetails](#)
- struct [org::genivi::navigation::poiservice::POIServiceTypes::CategoryDetails](#)
- struct [org::genivi::navigation::poiservice::POIServiceTypes::Category](#)
- struct [org::genivi::navigation::poiservice::POIServiceTypes::CategoryAndLevel](#)
- struct [org::genivi::navigation::poiservice::POIServiceTypes::CategoryAndName](#)
- struct [org::genivi::navigation::poiservice::POIServiceTypes::CategoryAndReason](#)
- struct [org::genivi::navigation::poiservice::POIServiceTypes::CategoryAndStatus](#)
- struct [org::genivi::navigation::poiservice::POIServiceTypes::PoiAddedDetails](#)

Modules

- module [org::genivi::navigation::poiservice](#)

Index

- ADDED
 - org::genivi::navigation::poiservice::POIService↔
Types, 29
- AIRLINE_ACCESS
 - org::genivi::navigation::poiservice::POIService↔
Types, 28
- AIRPORT
 - org::genivi::navigation::poiservice::POIService↔
Types, 25, 28
- ALL_CATEGORIES
 - org::genivi::navigation::poiservice::POIService↔
Types, 25
- AMUSEMENT_PARK
 - org::genivi::navigation::poiservice::POIService↔
Types, 28
- ATTR_ADDED
 - org::genivi::navigation::poiservice::POIService↔
Types, 29
- ATTR_MODIFIED
 - org::genivi::navigation::poiservice::POIService↔
Types, 29
- ATTR_REMOVED
 - org::genivi::navigation::poiservice::POIService↔
Types, 29
- ATTRIBUTE_CUSTOM
 - org::genivi::navigation::poiservice::POIService↔
Types, 26
- ATM
 - org::genivi::navigation::poiservice::POIService↔
Types, 28
- addCategories
 - org::genivi::navigation::poiservice::POIContent↔
Access, 15
- addPOIs
 - org::genivi::navigation::poiservice::POIContent↔
AccessModule, 16
- AttributeID
 - org::genivi::navigation::poiservice::POIService↔
Types, 24
- attributeList
 - org::genivi::navigation::poiservice::POIService↔
Types::CAMCategory, 3
 - org::genivi::navigation::poiservice::POIService↔
Types::CAMCategoryUpdate, 4
 - org::genivi::navigation::poiservice::POIService↔
Types::Category, 4
 - org::genivi::navigation::poiservice::POIService↔
Types::PoiAddedDetails, 9
 - org::genivi::navigation::poiservice::POIService↔
Types::PoiCAMDetails, 10
 - org::genivi::navigation::poiservice::POIService↔
Types::SearchResult, 29
 - org::genivi::navigation::poiservice::POIService↔
Types::SearchResultDetails, 30
- AttributeType
 - org::genivi::navigation::poiservice::POIService↔
Types, 24
- BANK_AND_FINANCIAL
 - org::genivi::navigation::poiservice::POIService↔
Types, 25
- BANK
 - org::genivi::navigation::poiservice::POIService↔
Types, 28
- BAR_OR_PUB
 - org::genivi::navigation::poiservice::POIService↔
Types, 27
- BOOLEAN
 - org::genivi::navigation::poiservice::POIService↔
Types, 24
- BUSINESS_AREA
 - org::genivi::navigation::poiservice::POIService↔
Types, 25
- BUSINESS_FACILITY
 - org::genivi::navigation::poiservice::POIService↔
Types, 28
- boolValue
 - org::genivi::navigation::poiservice::POIService↔
Types::AttributeValue, 3
- CAMPING
 - org::genivi::navigation::poiservice::POIService↔
Types, 27
- CAR_DEALERSHIP
 - org::genivi::navigation::poiservice::POIService↔
Types, 27
- CAR_DEALER
 - org::genivi::navigation::poiservice::POIService↔
Types, 25
- CAR_RENTAL_AGENCY
 - org::genivi::navigation::poiservice::POIService↔
Types, 25
- CAR_REPAIR_SHOP
 - org::genivi::navigation::poiservice::POIService↔
Types, 25
- CAR_SHIPPING_TERMINAL
 - org::genivi::navigation::poiservice::POIService↔
Types, 27
- CAR_WASH
 - org::genivi::navigation::poiservice::POIService↔
Types, 27
- CARAVAN_SITE
 - org::genivi::navigation::poiservice::POIService↔
Types, 27
- CINEMA
 - org::genivi::navigation::poiservice::POIService↔
Types, 27
- CITY_CENTER
 - org::genivi::navigation::poiservice::POIService↔
Types, 28
- CITY_HALL

- org::genivi::navigation::poiservice::POIService↔
Types, 27
- COACH_AND_LORRY_PARKING
 - org::genivi::navigation::poiservice::POIService↔
Types, 27
- COFFEE_SHOP
 - org::genivi::navigation::poiservice::POIService↔
Types, 27
- COMMUNITY_CENTER
 - org::genivi::navigation::poiservice::POIService↔
Types, 27
- CONTROLLED_ACCESS_ENTRY_EXIT
 - org::genivi::navigation::poiservice::POIService↔
Types, 27
- CONTROLLED_ACCESS_INTERSECTION
 - org::genivi::navigation::poiservice::POIService↔
Types, 27
- CONTROLLED_ACCESS_SMART_IC
 - org::genivi::navigation::poiservice::POIService↔
Types, 27
- COORDINATES_FORMAT
 - org::genivi::navigation::poiservice::POIService↔
Types, 26
- COORDINATES
 - org::genivi::navigation::poiservice::POIService↔
Types, 24
- COURT_HOUSE
 - org::genivi::navigation::poiservice::POIService↔
Types, 27
- CURRENCY_EXCHANGE
 - org::genivi::navigation::poiservice::POIService↔
Types, 28
- CUSTOMS
 - org::genivi::navigation::poiservice::POIService↔
Types, 28
- cancelPoiProximityAlert
 - org::genivi::navigation::poiservice::POISearch, 20
- cancelPoiSearch
 - org::genivi::navigation::poiservice::POISearch, 20
- categories
 - org::genivi::navigation::poiservice::POIService↔
Types::SearchResultDetails, 30
- CategoriesRemoved
 - org::genivi::navigation::poiservice::POIContent↔
AccessModule_client, 18
- categoriesUpdated
 - org::genivi::navigation::poiservice::POISearch↔
client, 22
- category
 - org::genivi::navigation::poiservice::POIService↔
Types::PoiCAMDetails, 10
- CategoryIDSet
 - org::genivi::navigation::poiservice::POIService↔
Types, 24
- categoryId
 - org::genivi::navigation::poiservice::POIService↔
Types::AttributeDetails, 2
- ConfigurationChanged
 - org::genivi::navigation::poiservice::POIContent↔
AccessModule_client, 18
- configurationChanged
 - org::genivi::navigation::poiservice::POIConfiguration↔
_client, 14
- ConfigurationChangedReason
 - org::genivi::navigation::poiservice::POIService↔
Types, 25
- ContentAccessModuleID
 - org::genivi::navigation::poiservice::POIService↔
Types, 24
- CoordinatesFormat
 - org::genivi::navigation::poiservice::POIConfiguration,
11
- createCategory
 - org::genivi::navigation::poiservice::POIContent↔
AccessModule, 16
- createPoiSearchHandle
 - org::genivi::navigation::poiservice::POISearch, 20
- DEGREES
 - org::genivi::navigation::poiservice::POIConfiguration,
11
- DENTIST
 - org::genivi::navigation::poiservice::POIService↔
Types, 27
- DESTINATION_FLAG
 - org::genivi::navigation::poiservice::POIService↔
Types, 25
- deletePoiSearchHandle
 - org::genivi::navigation::poiservice::POISearch, 20
- description
 - org::genivi::navigation::poiservice::POIService↔
Types::CategoryDetails, 7
- details
 - org::genivi::navigation::poiservice::POIService↔
Types::CAMCategory, 3
 - org::genivi::navigation::poiservice::POIService↔
Types::Category, 4
 - org::genivi::navigation::poiservice::POIService↔
Types::SearchResultDetails, 30
- distance
 - org::genivi::navigation::poiservice::POIService↔
Types::PoiCAMDetails, 10
 - org::genivi::navigation::poiservice::POIService↔
Types::SearchResult, 29
- EDUCATION
 - org::genivi::navigation::poiservice::POIService↔
Types, 28
- EMBASSY
 - org::genivi::navigation::poiservice::POIService↔
Types, 27
- EMERGENCY_CALL_STATION
 - org::genivi::navigation::poiservice::POIService↔
Types, 28
- EMERGENCY_MEDICAL_SERVICE
 - org::genivi::navigation::poiservice::POIService↔
Types, 28

ENTERTAINMENT

org::genivi::navigation::poiservice::POIService↔
Types, 25

EQUAL

org::genivi::navigation::poiservice::POIService↔
Types, 26

EVS_CHARGING_STATION

org::genivi::navigation::poiservice::POIService↔
Types, 27

EXHIBITION_CONFERENCE_CENTER

org::genivi::navigation::poiservice::POIService↔
Types, 28

FAST_FOOD

org::genivi::navigation::poiservice::POIService↔
Types, 27

FAVORITE_ADDRESSBOOK

org::genivi::navigation::poiservice::POIService↔
Types, 25

FAVORITE_HOME

org::genivi::navigation::poiservice::POIService↔
Types, 25

FAVORITE

org::genivi::navigation::poiservice::POIService↔
Types, 25

FERRY_TERMINAL

org::genivi::navigation::poiservice::POIService↔
Types, 25, 28

FINISHED

org::genivi::navigation::poiservice::POIService↔
Types, 26

FIRE_BRIGADE

org::genivi::navigation::poiservice::POIService↔
Types, 28

FIRST_AID_POST

org::genivi::navigation::poiservice::POIService↔
Types, 28

FLASH_RADAR

org::genivi::navigation::poiservice::POIService↔
Types, 25

FOOT

org::genivi::navigation::poiservice::POIConfiguration,
12

FRONTIER_CROSSING

org::genivi::navigation::poiservice::POIService↔
Types, 28

FUEL_STATION

org::genivi::navigation::poiservice::POIService↔
Types, 25

GOING_OUT

org::genivi::navigation::poiservice::POIService↔
Types, 28

GOLF_COURSE

org::genivi::navigation::poiservice::POIService↔
Types, 28

GOVERNMENT_OFFICE

org::genivi::navigation::poiservice::POIService↔
Types, 27

getAvailableCategories

org::genivi::navigation::poiservice::POIContent↔
AccessModule, 16

org::genivi::navigation::poiservice::POISearch, 20

getCategoriesDetails

org::genivi::navigation::poiservice::POISearch, 20

getCategoriesWithStandardCategoryId

org::genivi::navigation::poiservice::POISearch, 20

getChildrenCategories

org::genivi::navigation::poiservice::POIContent↔
AccessModule, 16

org::genivi::navigation::poiservice::POISearch, 20

getCoordinatesFormat

org::genivi::navigation::poiservice::POIConfiguration,
12

getLocale

org::genivi::navigation::poiservice::POIConfiguration,
12

org::genivi::navigation::poiservice::POIContent↔
AccessModule, 16

getParentCategories

org::genivi::navigation::poiservice::POIContent↔
AccessModule, 17

org::genivi::navigation::poiservice::POISearch, 21

getPoiDetails

org::genivi::navigation::poiservice::POISearch, 21

getRootCategory

org::genivi::navigation::poiservice::POIContent↔
AccessModule, 17

org::genivi::navigation::poiservice::POISearch, 21

getSupportedCoordinatesFormat

org::genivi::navigation::poiservice::POIConfiguration,
12

getSupportedLocales

org::genivi::navigation::poiservice::POIConfiguration,
12

org::genivi::navigation::poiservice::POIContent↔
AccessModule, 17

getSupportedTimeFormats

org::genivi::navigation::poiservice::POIConfiguration,
13

getSupportedUnitsOfMeasurement

org::genivi::navigation::poiservice::POIConfiguration,
13

getTimeFormat

org::genivi::navigation::poiservice::POIConfiguration,
13

getUnitsOfMeasurement

org::genivi::navigation::poiservice::POIConfiguration,
13

getVersion

org::genivi::navigation::poiservice::POIConfiguration,
13

org::genivi::navigation::poiservice::POIContent↔
AccessModule, 17

org::genivi::navigation::poiservice::POISearch, 21

HAMLET

- org::genivi::navigation::poiservice::POIService↔
Types, 28
- HARBOUR
 - org::genivi::navigation::poiservice::POIService↔
Types, 28
- HISTORICAL_MONUMENT
 - org::genivi::navigation::poiservice::POIService↔
Types, 28
- HOSPITAL
 - org::genivi::navigation::poiservice::POIService↔
Types, 27
- HOTEL_MOTEL
 - org::genivi::navigation::poiservice::POIService↔
Types, 25, 27
- INSIDE_CORRIDOR
 - org::genivi::navigation::poiservice::POIService↔
Types, 26
- INTEGER
 - org::genivi::navigation::poiservice::POIService↔
Types, 24
- INVALID
 - org::genivi::navigation::poiservice::POIConfiguration,
11, 12
 - org::genivi::navigation::poiservice::POIService↔
Types, 26
- icons
 - org::genivi::navigation::poiservice::POIService↔
Types::CategoryDetails, 7
 - org::genivi::navigation::poiservice::POIService↔
Types::Details, 8
- id
 - org::genivi::navigation::poiservice::POIService↔
Types::AttributeDetails, 2
 - org::genivi::navigation::poiservice::POIService↔
Types::CAMCategoryUpdate, 4
 - org::genivi::navigation::poiservice::POIService↔
Types::CategoryAndRadius, 5
 - org::genivi::navigation::poiservice::POIService↔
Types::CategoryAttribute, 6
 - org::genivi::navigation::poiservice::POIService↔
Types::CategorySortOption, 7
 - org::genivi::navigation::poiservice::POIService↔
Types::Icon, 8
 - org::genivi::navigation::poiservice::POIService↔
Types::Media, 9
 - org::genivi::navigation::poiservice::POIService↔
Types::PoiAttribute, 10
 - org::genivi::navigation::poiservice::POIService↔
Types::PoiDetails, 19
 - org::genivi::navigation::poiservice::POIService↔
Types::SearchResult, 29
- intValue
 - org::genivi::navigation::poiservice::POIService↔
Types::AttributeValue, 3
- KINDERGARTEN
 - org::genivi::navigation::poiservice::POIService↔
Types, 28
- KIOSK
 - org::genivi::navigation::poiservice::POIService↔
Types, 25
- KM
 - org::genivi::navigation::poiservice::POIConfiguration,
12
- LANDMARK
 - org::genivi::navigation::poiservice::POIService↔
Types, 25
- LENGTH
 - org::genivi::navigation::poiservice::POIConfiguration,
12
- LESS_THAN
 - org::genivi::navigation::poiservice::POIService↔
Types, 26
- LIBRARY
 - org::genivi::navigation::poiservice::POIService↔
Types, 27
- LOCALES
 - org::genivi::navigation::poiservice::POIService↔
Types, 25
- LOCALE
 - org::genivi::navigation::poiservice::POIService↔
Types, 26
- location
 - org::genivi::navigation::poiservice::POIService↔
Types::PoiAddedDetails, 9
 - org::genivi::navigation::poiservice::POIService↔
Types::PoiCAMDetails, 10
 - org::genivi::navigation::poiservice::POIService↔
Types::PoiDetails, 19
- MARINA
 - org::genivi::navigation::poiservice::POIService↔
Types, 28
- MEDICAL
 - org::genivi::navigation::poiservice::POIService↔
Types, 25
- METER
 - org::genivi::navigation::poiservice::POIConfiguration,
12
- MILE
 - org::genivi::navigation::poiservice::POIConfiguration,
12
- MINUTES
 - org::genivi::navigation::poiservice::POIConfiguration,
11
- MORE_THAN
 - org::genivi::navigation::poiservice::POIService↔
Types, 26
- MOTOR_CYCLE_DEALERSHIP
 - org::genivi::navigation::poiservice::POIService↔
Types, 27
- MOTORING_ORG_OFFICE
 - org::genivi::navigation::poiservice::POIService↔
Types, 27
- MOTORWAY_EXIT

- org::genivi::navigation::poiservice::POIService↔
Types, 25
- MOUNTAIN_PASS_SUMMIT
 - org::genivi::navigation::poiservice::POIService↔
Types, 28
- MUSEUM
 - org::genivi::navigation::poiservice::POIService↔
Types, 27
- mandatory
 - org::genivi::navigation::poiservice::POIService↔
Types::AttributeDetails, 2
- media
 - org::genivi::navigation::poiservice::POIService↔
Types::CategoryDetails, 7
 - org::genivi::navigation::poiservice::POIService↔
Types::Details, 8
- NATIONAL_PARK
 - org::genivi::navigation::poiservice::POIService↔
Types, 28
- NOT_STANDARD_CATEGORY
 - org::genivi::navigation::poiservice::POIService↔
Types, 27
- NOT_STARTED
 - org::genivi::navigation::poiservice::POIService↔
Types, 26
- name
 - org::genivi::navigation::poiservice::POIService↔
Types::CategoryAndName, 5
 - org::genivi::navigation::poiservice::POIService↔
Types::CategoryAttribute, 6
 - org::genivi::navigation::poiservice::POIService↔
Types::CategoryDetails, 7
 - org::genivi::navigation::poiservice::POIService↔
Types::CategorySortOption, 7
 - org::genivi::navigation::poiservice::POIService↔
Types::Details, 8
 - org::genivi::navigation::poiservice::POIService↔
Types::Operator, 9
 - org::genivi::navigation::poiservice::POIService↔
Types::PoiAddedDetails, 9
 - org::genivi::navigation::poiservice::POIService↔
Types::PoiCAMDetails, 10
 - org::genivi::navigation::poiservice::POIService↔
Types::PoiDetails, 19
- OFF_ROUTE
 - org::genivi::navigation::poiservice::POIService↔
Types, 26
- ON_ROUTE
 - org::genivi::navigation::poiservice::POIService↔
Types, 26
- OPEN_PARKING
 - org::genivi::navigation::poiservice::POIService↔
Types, 27
- oper
 - org::genivi::navigation::poiservice::POIService↔
Types::AttributeDetails, 2
- OperatorType
 - org::genivi::navigation::poiservice::POIService↔
Types, 25
- operators
 - org::genivi::navigation::poiservice::POIService↔
Types::CategoryAttribute, 6
- org, 1
- org::genivi, 2
- org::genivi::navigation, 2
- org::genivi::navigation::poiservice, 2
- org::genivi::navigation::poiservice::POIConfiguration, 11
 - CoordinatesFormat, 11
 - DEGREES, 11
 - FOOT, 12
 - getCoordinatesFormat, 12
 - getLocale, 12
 - getSupportedCoordinatesFormat, 12
 - getSupportedLocales, 12
 - getSupportedTimeFormats, 13
 - getSupportedUnitsOfMeasurement, 13
 - getTimeFormat, 13
 - getUnitsOfMeasurement, 13
 - getVersion, 13
 - INVALID, 11, 12
 - KM, 12
 - LENGTH, 12
 - METER, 12
 - MILE, 12
 - MINUTES, 11
 - SECONDS, 11
 - setCoordinatesFormat, 13
 - setLocale, 13
 - setTimeFormat, 13
 - setUnitsOfMeasurement, 13
 - TWELVEH, 12
 - TWENTYFOURH, 12
 - TimeFormat, 11
 - Units, 12
 - UnitsOfMeasurementAttribute, 12, 14
 - UnitsOfMeasurementListValue, 11
 - UnitsOfMeasurementValue, 12
 - YARD, 12
- org::genivi::navigation::poiservice::POIConfiguration_↔
 - client, 14
 - configurationChanged, 14
- org::genivi::navigation::poiservice::POIContentAccess, 14
 - addCategories, 15
 - registerContentAccessModule, 15
 - registerPoiCategories, 15
 - removeCategories, 15
 - unRegisterContentAccessModule, 15
 - updateCategories, 15
- org::genivi::navigation::poiservice::POIContent↔
 - AccessModule, 16
 - addPOIs, 16
 - createCategory, 16
 - getAvailableCategories, 16
 - getChildrenCategories, 16

- getLocale, 16
- getParentCategories, 17
- getRootCategory, 17
- getSupportedLocales, 17
- getVersion, 17
- poiDetailsRequested, 17
- poiSearchCanceled, 17
- poiSearchStarted, 17
- removeCategories, 17
- removePOIs, 17
- resultListRequested, 17
- setLocale, 18
- org::genivi::navigation::poiservice::POIContent←
 - AccessModule_client, 18
 - CategoriesRemoved, 18
 - ConfigurationChanged, 18
 - POIAdded, 18
 - POIRemoved, 18
 - SearchStatusChanged, 19
- org::genivi::navigation::poiservice::POISearch, 19
 - cancelPoiProximityAlert, 20
 - cancelPoiSearch, 20
 - createPoiSearchHandle, 20
 - deletePoiSearchHandle, 20
 - getAvailableCategories, 20
 - getCategoriesDetails, 20
 - getCategoriesWithStandardCategoryId, 20
 - getChildrenCategories, 20
 - getParentCategories, 21
 - getPoiDetails, 21
 - getRootCategory, 21
 - getVersion, 21
 - requestResultList, 21
 - setAttributes, 21
 - setCategories, 21
 - setCenter, 21
 - setRouteHandle, 21
 - startPoiProximityAlert, 21
 - startPoiSearch, 22
 - validateCategories, 22
- org::genivi::navigation::poiservice::POISearch_client, 22
 - categoriesUpdated, 22
 - poiStatus, 22
 - resultListChanged, 22
- org::genivi::navigation::poiservice::POIServiceTypes, 23
 - ADDED, 29
 - AIRLINE_ACCESS, 28
 - AIRPORT, 25, 28
 - ALL_CATEGORIES, 25
 - AMUSEMENT_PARK, 28
 - ATTR_ADDED, 29
 - ATTR_MODIFIED, 29
 - ATTR_REMOVED, 29
 - ATTRIBUTE_CUSTOM, 26
 - ATM, 28
 - AttributeID, 24
 - AttributeType, 24
 - BANK_AND_FINANCIAL, 25
 - BANK, 28
 - BAR_OR_PUB, 27
 - BOOLEAN, 24
 - BUSINESS_AREA, 25
 - BUSINESS_FACILITY, 28
 - CAMPING, 27
 - CAR_DEALERSHIP, 27
 - CAR_DEALER, 25
 - CAR_RENTAL_AGENCY, 25
 - CAR_REPAIR_SHOP, 25
 - CAR_SHIPPING_TERMINAL, 27
 - CAR_WASH, 27
 - CARAVAN_SITE, 27
 - CINEMA, 27
 - CITY_CENTER, 28
 - CITY_HALL, 27
 - COACH_AND_LORRY_PARKING, 27
 - COFFEE_SHOP, 27
 - COMMUNITY_CENTER, 27
 - CONTROLLED_ACCESS_ENTRY_EXIT, 27
 - CONTROLLED_ACCESS_INTERSECTION, 27
 - CONTROLLED_ACCESS_SMART_IC, 27
 - COORDINATES_FORMAT, 26
 - COORDINATES, 24
 - COURT_HOUSE, 27
 - CURRENCY_EXCHANGE, 28
 - CUSTOMS, 28
 - CategoryIDSet, 24
 - ConfigurationChangedReason, 25
 - ContentAccessModuleID, 24
 - DENTIST, 27
 - DESTINATION_FLAG, 25
 - EDUCATION, 28
 - EMBASSY, 27
 - EMERGENCY_CALL_STATION, 28
 - EMERGENCY_MEDICAL_SERVICE, 28
 - ENTERTAINMENT, 25
 - EQUAL, 26
 - EVS_CHARGING_STATION, 27
 - EXHIBITION_CONFERENCE_CENTER, 28
 - FAST_FOOD, 27
 - FAVORITE_ADDRESSBOOK, 25
 - FAVORITE_HOME, 25
 - FAVORITE, 25
 - FERRY_TERMINAL, 25, 28
 - FINISHED, 26
 - FIRE_BRIGADE, 28
 - FIRST_AID_POST, 28
 - FLASH_RADAR, 25
 - FRONTIER_CROSSING, 28
 - FUEL_STATION, 25
 - GOING_OUT, 28
 - GOLF_COURSE, 28
 - GOVERNMENT_OFFICE, 27
 - HAMLET, 28
 - HARBOUR, 28
 - HISTORICAL_MONUMENT, 28

- HOSPITAL, [27](#)
- HOTEL_MOTEL, [25, 27](#)
- INSIDE_CORRIDOR, [26](#)
- INTEGER, [24](#)
- INVALID, [26](#)
- KINDERGARTEN, [28](#)
- KIOSK, [25](#)
- LANDMARK, [25](#)
- LESS_THAN, [26](#)
- LIBRARY, [27](#)
- LOCALES, [25](#)
- LOCALE, [26](#)
- MARINA, [28](#)
- MEDICAL, [25](#)
- MORE_THAN, [26](#)
- MOTOR_CYCLE_DEALERSHIP, [27](#)
- MOTORING_ORG_OFFICE, [27](#)
- MOTORWAY_EXIT, [25](#)
- MOUNTAIN_PASS_SUMMIT, [28](#)
- MUSEUM, [27](#)
- NATIONAL_PARK, [28](#)
- NOT_STANDARD_CATEGORY, [27](#)
- NOT_STARTED, [26](#)
- OFF_ROUTE, [26](#)
- ON_ROUTE, [26](#)
- OPEN_PARKING, [27](#)
- OperatorType, [25](#)
- PARK_AND_RIDE, [28](#)
- PARKING_GARAGE, [27](#)
- PARKING, [25](#)
- PETROL_STATION, [27](#)
- PHARMACY, [27](#)
- PHYSICIAN, [27](#)
- PLACE_OF_WORSHIP, [28](#)
- POI_ID, [24](#)
- POI_TRUCK, [25](#)
- POLICE_STATION, [27](#)
- POST_OFFICE, [27](#)
- PUBLIC_BUILDING, [25](#)
- PUBLIC_PHONE, [28](#)
- PUBLIC_RESTROOM, [28](#)
- PUBLIC_TRANSIT_STOP, [28](#)
- RAILWAY_STATION, [25, 28](#)
- RECREATION, [28](#)
- REMOVED, [29](#)
- RENT_A_CAR, [27](#)
- REST_AREA, [27](#)
- RESTAURANT, [25, 27](#)
- ROAD_ASSISTANCE, [27](#)
- ResourceID, [24](#)
- RouteStatus, [26](#)
- SANCTUARY, [25](#)
- SEARCHING, [26](#)
- SERVICE_AREA, [25](#)
- SHOPPING_CENTER, [27](#)
- SHOPPING, [25](#)
- SKI_RESORT, [28](#)
- SORT_BY_DISTANCE, [26](#)
- SORT_BY_TIME, [26](#)
- SORT_DEFAULT, [26](#)
- SPEED_CAMERA, [28](#)
- SPORTING, [25](#)
- SPORTS_CENTER, [28](#)
- STADIUM, [28](#)
- STORE, [28](#)
- STRING, [24](#)
- SWIMMING_POOL, [28](#)
- SearchStatusState, [26](#)
- Settings, [26](#)
- SortOption, [26](#)
- StandardCategory, [26](#)
- TAXI_STAND, [28](#)
- THEATRE, [27](#)
- TIME_FORMAT, [26](#)
- TOLL_LOCATION, [28](#)
- TOLLBOOTH, [25](#)
- TOURIST_ATTRACTION, [28](#)
- TOURIST_OFFICE, [28](#)
- TOURIST, [25](#)
- TRAVEL_AGENCY, [28](#)
- TRAVEL, [25](#)
- TRUCK_DEALERSHIP, [27](#)
- UNITS_OF_MEASUREMENT, [26](#)
- USER_CONTACT, [25](#)
- USER_IMPORT, [25](#)
- UpdateReason, [28](#)
- VEHICLE_REPAIR, [27](#)
- VETERINARIAN_SERVICE, [27](#)
- WATER_CLOSET, [25](#)
- ZOO, [28](#)
- org::genivi::navigation::poiservice::POIServiceTypes::↔
 - AttributeDetails, [2](#)
 - categoryId, [2](#)
 - id, [2](#)
 - mandatory, [2](#)
 - oper, [2](#)
 - type, [2](#)
 - value, [2](#)
- org::genivi::navigation::poiservice::POIServiceTypes::↔
 - AttributeValue, [3](#)
 - boolValue, [3](#)
 - intValue, [3](#)
 - stringValue, [3](#)
- org::genivi::navigation::poiservice::POIServiceTypes::↔
 - CAMCategory, [3](#)
 - attributeList, [3](#)
 - details, [3](#)
 - sortOptions, [3](#)
- org::genivi::navigation::poiservice::POIServiceTypes::↔
 - CAMCategoryUpdate, [3](#)
 - attributeList, [4](#)
 - id, [4](#)
 - sortOptions, [4](#)
- org::genivi::navigation::poiservice::POIServiceTypes::↔
 - Category, [4](#)
 - attributeList, [4](#)

- details, 4
 - sortOptions, 4
- org::genivi::navigation::poiservice::POIServiceTypes::↔
 - CategoryAndLevel, 4
 - topLevel, 4
 - uniqueId, 4
- org::genivi::navigation::poiservice::POIServiceTypes::↔
 - CategoryAndName, 5
 - name, 5
 - topLevel, 5
 - uniqueId, 5
- org::genivi::navigation::poiservice::POIServiceTypes::↔
 - CategoryAndRadius, 5
 - id, 5
 - radius, 5
- org::genivi::navigation::poiservice::POIServiceTypes::↔
 - CategoryAndReason, 5
 - reason, 6
 - unique_id, 6
- org::genivi::navigation::poiservice::POIServiceTypes::↔
 - CategoryAndStatus, 6
 - status, 6
 - uniqueId, 6
- org::genivi::navigation::poiservice::POIServiceTypes::↔
 - CategoryAttribute, 6
 - id, 6
 - name, 6
 - operators, 6
 - type, 6
- org::genivi::navigation::poiservice::POIServiceTypes::↔
 - CategoryDetails, 7
 - description, 7
 - icons, 7
 - media, 7
 - name, 7
 - parentsId, 7
 - standardCategoryId, 7
 - topLevel, 7
 - uniqueId, 7
- org::genivi::navigation::poiservice::POIServiceTypes::↔
 - CategorySortOption, 7
 - id, 7
 - name, 7
- org::genivi::navigation::poiservice::POIServiceTypes::↔
 - Details, 8
 - icons, 8
 - media, 8
 - name, 8
 - parentsId, 8
 - shortDesc, 8
- org::genivi::navigation::poiservice::POIServiceTypes::↔
 - Icon, 8
 - id, 8
 - url, 8
- org::genivi::navigation::poiservice::POIServiceTypes::↔
 - Media, 8
 - id, 9
 - url, 9
- org::genivi::navigation::poiservice::POIServiceTypes::↔
 - Operator, 9
 - name, 9
 - type, 9
 - value, 9
- org::genivi::navigation::poiservice::POIServiceTypes::↔
 - PoiAddedDetails, 9
 - attributeList, 9
 - location, 9
 - name, 9
- org::genivi::navigation::poiservice::POIServiceTypes::↔
 - PoiAttribute, 10
 - id, 10
 - type, 10
 - value, 10
- org::genivi::navigation::poiservice::POIServiceTypes::↔
 - PoiCAMDetails, 10
 - attributeList, 10
 - category, 10
 - distance, 10
 - location, 10
 - name, 10
 - sourceId, 10
- org::genivi::navigation::poiservice::POIServiceTypes::↔
 - PoiDetails, 19
 - id, 19
 - location, 19
 - name, 19
- org::genivi::navigation::poiservice::POIServiceTypes::↔
 - SearchResult, 29
 - attributeList, 29
 - distance, 29
 - id, 29
 - routeStatus, 29
- org::genivi::navigation::poiservice::POIServiceTypes::↔
 - SearchResultDetails, 29
 - attributeList, 30
 - categories, 30
 - details, 30
- PARK_AND_RIDE
 - org::genivi::navigation::poiservice::POIService↔
Types, 28
- PARKING_GARAGE
 - org::genivi::navigation::poiservice::POIService↔
Types, 27
- PARKING
 - org::genivi::navigation::poiservice::POIService↔
Types, 25
- PETROL_STATION
 - org::genivi::navigation::poiservice::POIService↔
Types, 27
- PHARMACY
 - org::genivi::navigation::poiservice::POIService↔
Types, 27
- PHYSICIAN
 - org::genivi::navigation::poiservice::POIService↔
Types, 27
- PLACE_OF_WORSHIP

- org::genivi::navigation::poiservice::POIService↔
Types, 28
- POI_ID
 - org::genivi::navigation::poiservice::POIService↔
Types, 24
- POI_TRUCK
 - org::genivi::navigation::poiservice::POIService↔
Types, 25
- POIAdded
 - org::genivi::navigation::poiservice::POIContent↔
AccessModule_client, 18
- POIConfiguration.fidl, 30
- POIContentAccess.fidl, 30
- POIContentAccessModule.fidl, 30
- POIRemoved
 - org::genivi::navigation::poiservice::POIContent↔
AccessModule_client, 18
- POISearch.fidl, 31
- POIServiceTypes.fidl, 31
- POLICE_STATION
 - org::genivi::navigation::poiservice::POIService↔
Types, 27
- POST_OFFICE
 - org::genivi::navigation::poiservice::POIService↔
Types, 27
- PUBLIC_BUILDING
 - org::genivi::navigation::poiservice::POIService↔
Types, 25
- PUBLIC_PHONE
 - org::genivi::navigation::poiservice::POIService↔
Types, 28
- PUBLIC_RESTROOM
 - org::genivi::navigation::poiservice::POIService↔
Types, 28
- PUBLIC_TRANSIT_STOP
 - org::genivi::navigation::poiservice::POIService↔
Types, 28
- parentsId
 - org::genivi::navigation::poiservice::POIService↔
Types::CategoryDetails, 7
 - org::genivi::navigation::poiservice::POIService↔
Types::Details, 8
- poiDetailsRequested
 - org::genivi::navigation::poiservice::POIContent↔
AccessModule, 17
- poiSearchCanceled
 - org::genivi::navigation::poiservice::POIContent↔
AccessModule, 17
- poiSearchStarted
 - org::genivi::navigation::poiservice::POIContent↔
AccessModule, 17
- poiStatus
 - org::genivi::navigation::poiservice::POISearch_↔
client, 22
- RAILWAY_STATION
 - org::genivi::navigation::poiservice::POIService↔
Types, 25, 28
- RECREATION
 - org::genivi::navigation::poiservice::POIService↔
Types, 28
- REMOVED
 - org::genivi::navigation::poiservice::POIService↔
Types, 29
- RENT_A_CAR
 - org::genivi::navigation::poiservice::POIService↔
Types, 27
- REST_AREA
 - org::genivi::navigation::poiservice::POIService↔
Types, 27
- RESTAURANT
 - org::genivi::navigation::poiservice::POIService↔
Types, 25, 27
- ROAD_ASSISTANCE
 - org::genivi::navigation::poiservice::POIService↔
Types, 27
- radius
 - org::genivi::navigation::poiservice::POIService↔
Types::CategoryAndRadius, 5
- reason
 - org::genivi::navigation::poiservice::POIService↔
Types::CategoryAndReason, 6
- registerContentAccessModule
 - org::genivi::navigation::poiservice::POIContent↔
Access, 15
- registerPoiCategories
 - org::genivi::navigation::poiservice::POIContent↔
Access, 15
- removeCategories
 - org::genivi::navigation::poiservice::POIContent↔
Access, 15
 - org::genivi::navigation::poiservice::POIContent↔
AccessModule, 17
- removePOIs
 - org::genivi::navigation::poiservice::POIContent↔
AccessModule, 17
- requestResultList
 - org::genivi::navigation::poiservice::POISearch, 21
- ResourceID
 - org::genivi::navigation::poiservice::POIService↔
Types, 24
- resultListChanged
 - org::genivi::navigation::poiservice::POISearch_↔
client, 22
- resultListRequested
 - org::genivi::navigation::poiservice::POIContent↔
AccessModule, 17
- RouteStatus
 - org::genivi::navigation::poiservice::POIService↔
Types, 26
- routeStatus
 - org::genivi::navigation::poiservice::POIService↔
Types::SearchResult, 29
- SANCTUARY
 - org::genivi::navigation::poiservice::POIService↔
Types, 25
- SEARCHING

- org::genivi::navigation::poiservice::POIService↔
Types, 26
- SECONDS
 - org::genivi::navigation::poiservice::POIConfiguration, 11
- SERVICE_AREA
 - org::genivi::navigation::poiservice::POIService↔
Types, 25
- SHOPPING_CENTER
 - org::genivi::navigation::poiservice::POIService↔
Types, 27
- SHOPPING
 - org::genivi::navigation::poiservice::POIService↔
Types, 25
- SKI_RESORT
 - org::genivi::navigation::poiservice::POIService↔
Types, 28
- SORT_BY_DISTANCE
 - org::genivi::navigation::poiservice::POIService↔
Types, 26
- SORT_BY_TIME
 - org::genivi::navigation::poiservice::POIService↔
Types, 26
- SORT_DEFAULT
 - org::genivi::navigation::poiservice::POIService↔
Types, 26
- SPEED_CAMERA
 - org::genivi::navigation::poiservice::POIService↔
Types, 28
- SPORTING
 - org::genivi::navigation::poiservice::POIService↔
Types, 25
- SPORTS_CENTER
 - org::genivi::navigation::poiservice::POIService↔
Types, 28
- STADIUM
 - org::genivi::navigation::poiservice::POIService↔
Types, 28
- STORE
 - org::genivi::navigation::poiservice::POIService↔
Types, 28
- STRING
 - org::genivi::navigation::poiservice::POIService↔
Types, 24
- SWIMMING_POOL
 - org::genivi::navigation::poiservice::POIService↔
Types, 28
- SearchStatusChanged
 - org::genivi::navigation::poiservice::POIContent↔
AccessModule_client, 19
- SearchStatusState
 - org::genivi::navigation::poiservice::POIService↔
Types, 26
- setAttributes
 - org::genivi::navigation::poiservice::POISearch, 21
- setCategories
 - org::genivi::navigation::poiservice::POISearch, 21
- setCenter
 - org::genivi::navigation::poiservice::POISearch, 21
- setCoordinatesFormat
 - org::genivi::navigation::poiservice::POIConfiguration, 13
- setLocale
 - org::genivi::navigation::poiservice::POIConfiguration, 13
- org::genivi::navigation::poiservice::POIContent↔
AccessModule, 18
- setRouteHandle
 - org::genivi::navigation::poiservice::POISearch, 21
- setTimeFormat
 - org::genivi::navigation::poiservice::POIConfiguration, 13
- setUnitsOfMeasurement
 - org::genivi::navigation::poiservice::POIConfiguration, 13
- Settings
 - org::genivi::navigation::poiservice::POIService↔
Types, 26
- shortDesc
 - org::genivi::navigation::poiservice::POIService↔
Types::Details, 8
- SortOption
 - org::genivi::navigation::poiservice::POIService↔
Types, 26
- sortOptions
 - org::genivi::navigation::poiservice::POIService↔
Types::CAMCategory, 3
 - org::genivi::navigation::poiservice::POIService↔
Types::CAMCategoryUpdate, 4
 - org::genivi::navigation::poiservice::POIService↔
Types::Category, 4
- sourceId
 - org::genivi::navigation::poiservice::POIService↔
Types::PoiCAMDetails, 10
- StandardCategory
 - org::genivi::navigation::poiservice::POIService↔
Types, 26
- standardCategoryId
 - org::genivi::navigation::poiservice::POIService↔
Types::CategoryDetails, 7
- startPoiProximityAlert
 - org::genivi::navigation::poiservice::POISearch, 21
- startPoiSearch
 - org::genivi::navigation::poiservice::POISearch, 22
- status
 - org::genivi::navigation::poiservice::POIService↔
Types::CategoryAndStatus, 6
- stringValue
 - org::genivi::navigation::poiservice::POIService↔
Types::AttributeValue, 3
- TAXI_STAND
 - org::genivi::navigation::poiservice::POIService↔
Types, 28
- THEATRE
 - org::genivi::navigation::poiservice::POIService↔
Types, 27

- TIME_FORMAT
 org::genivi::navigation::poiservice::POIService↔
 Types, 26
- TOLL_LOCATION
 org::genivi::navigation::poiservice::POIService↔
 Types, 28
- TOLLBOOTH
 org::genivi::navigation::poiservice::POIService↔
 Types, 25
- TOURIST_ATTRACTION
 org::genivi::navigation::poiservice::POIService↔
 Types, 28
- TOURIST_OFFICE
 org::genivi::navigation::poiservice::POIService↔
 Types, 28
- TOURIST
 org::genivi::navigation::poiservice::POIService↔
 Types, 25
- TRAVEL_AGENCY
 org::genivi::navigation::poiservice::POIService↔
 Types, 28
- TRAVEL
 org::genivi::navigation::poiservice::POIService↔
 Types, 25
- TRUCK_DEALERSHIP
 org::genivi::navigation::poiservice::POIService↔
 Types, 27
- TWELVEH
 org::genivi::navigation::poiservice::POIConfiguration,
 12
- TWENTYFOURH
 org::genivi::navigation::poiservice::POIConfiguration,
 12
- TimeFormat
 org::genivi::navigation::poiservice::POIConfiguration,
 11
- topLevel
 org::genivi::navigation::poiservice::POIService↔
 Types::CategoryAndLevel, 4
 org::genivi::navigation::poiservice::POIService↔
 Types::CategoryAndName, 5
 org::genivi::navigation::poiservice::POIService↔
 Types::CategoryDetails, 7
- type
 org::genivi::navigation::poiservice::POIService↔
 Types::AttributeDetails, 2
 org::genivi::navigation::poiservice::POIService↔
 Types::CategoryAttribute, 6
 org::genivi::navigation::poiservice::POIService↔
 Types::Operator, 9
 org::genivi::navigation::poiservice::POIService↔
 Types::PoiAttribute, 10
- UNITS_OF_MEASUREMENT
 org::genivi::navigation::poiservice::POIService↔
 Types, 26
- USER_CONTACT
 org::genivi::navigation::poiservice::POIService↔
 Types, 25
- USER_IMPORT
 org::genivi::navigation::poiservice::POIService↔
 Types, 25
- unRegisterContentAccessModule
 org::genivi::navigation::poiservice::POIContent↔
 Access, 15
- unique_id
 org::genivi::navigation::poiservice::POIService↔
 Types::CategoryAndReason, 6
- uniqueId
 org::genivi::navigation::poiservice::POIService↔
 Types::CategoryAndLevel, 4
 org::genivi::navigation::poiservice::POIService↔
 Types::CategoryAndName, 5
 org::genivi::navigation::poiservice::POIService↔
 Types::CategoryAndStatus, 6
 org::genivi::navigation::poiservice::POIService↔
 Types::CategoryDetails, 7
- Units
 org::genivi::navigation::poiservice::POIConfiguration,
 12
- UnitsOfMeasurementAttribute
 org::genivi::navigation::poiservice::POIConfiguration,
 12, 14
- UnitsOfMeasurementListValue
 org::genivi::navigation::poiservice::POIConfiguration,
 11
- UnitsOfMeasurementValue
 org::genivi::navigation::poiservice::POIConfiguration,
 12
- updateCategories
 org::genivi::navigation::poiservice::POIContent↔
 Access, 15
- UpdateReason
 org::genivi::navigation::poiservice::POIService↔
 Types, 28
- url
 org::genivi::navigation::poiservice::POIService↔
 Types::Icon, 8
 org::genivi::navigation::poiservice::POIService↔
 Types::Media, 9
- VEHICLE_REPAIR
 org::genivi::navigation::poiservice::POIService↔
 Types, 27
- VETERINARIAN_SERVICE
 org::genivi::navigation::poiservice::POIService↔
 Types, 27
- validateCategories
 org::genivi::navigation::poiservice::POISearch, 22
- value
 org::genivi::navigation::poiservice::POIService↔
 Types::AttributeDetails, 2
 org::genivi::navigation::poiservice::POIService↔
 Types::Operator, 9
 org::genivi::navigation::poiservice::POIService↔
 Types::PoiAttribute, 10
- WATER_CLOSET

org::genivi::navigation::poiservice::POIService↔
Types, [25](#)

YARD

org::genivi::navigation::poiservice::POIConfiguration,
[12](#)

ZOO

org::genivi::navigation::poiservice::POIService↔
Types, [28](#)