



1

2

GENIVI Alliance

3GENIVI Document CS00066

4POIService

5Component Specification

6Accepted Version 3.0.0

721-02-2018

8Sponsored by:
9GENIVI Alliance

10true

11Accepted

12**Abstract:**

13This document provides the Component Specification for the POIService

14**Keywords:**

15POI, Search, Navigation

2

1This work is licensed under a Creative Commons Attribution-ShareAlike 4.0 International
2License. Copyright © 2018, trueBMW Car IT GmbH, Continental Automotive GmbH, PCA Peugeot Citroën, XS
3Embedded GmbH, TomTom International B.V., Alpine Electronics R&D Europe GmbH, AISIN AW CO.LTD.

4

5All rights reserved.

6The information within this document is the property of the true and its use and disclosure are restricted. Elements of
7GENIVI Alliance specifications may be subject to third party intellectual property rights, including without limitation, pat-
8ent, copyright or trademark rights (and such third parties may or may not be members of GENIVI Alliance). GENIVI Alli-
9ance true not responsible and shall not be held responsible in any manner for identifying, failing to identify, or for securing
10proper access to or use of, any or all such third party intellectual property rights.true

11“”

12

13

14

15

16

17GENIVI and the GENIVI Logo are trademarks of GENIVI Alliance in the U.S. and/or other countries. Other company,
18brand and product names referred to in this document may be trademarks that are claimed as the property of their respective
19owners.

20trueThis work is licensed under a Creative Commons Attribution-ShareAlike 4.0 International License.

21<http://creativecommons.org/licenses/by-sa/4.0>

22

23

24The above notice and this paragraph must be included on all copies of this document that are made.

25

26

27

28

GENIVI Alliance
2400 Camino Ramon, Suite 375
San Ramon, CA 94583, USA

1. Revision History

The following table shows the revision history for this document.

Document Revision History

Version	Date	Author	Change
0.1	24 Oct 2012	Marco Residori (XS Embedded)	Created empty template
0.2	19 Dec 2012	Marco Residori (XS Embedded)	Added architecture diagram. Added sequence Diagrams. Updated APIs, Added Cedric Ranson's use case descriptions.
1.0	19 Dec 2012	Marco Residori (XS Embedded)	Added architecture diagram. Corrected typos.
1.1	3 Feb 2017	Philippe COLLIOT (PSA GROUPE)	Refine the document for Franca based API
1.2	21 Feb 2018	Philippe COLLIOT (Groupe PSA)	Align with new version of the API

2

1

Table of contents

2

31 Introduction.....5

4 1.1 System Overview.....5

5 1.2 Component Overview.....5

62 Terminology.....6

73 Architecture.....7

8 3.1 Interfaces.....7

9 3.2 Interaction with other Components.....8

104 API.....9

11 4.1 Git Repository.....9

12 4.2 Use Cases.....9

 4.2.1 POI Search.....9

 4.2.1.1 The HMI displays the list of POI categories.....9

 4.2.1.2 The user searches for a restaurants around his/her position..... 11

 4.2.1.3 The user is running out of fuel and therefore creates a proximity alert around his/her position to receive a sound alert in case a new fuel station is detected..... 13

 4.2.2 POI Content Access..... 14

 4.2.2.1 The user wants to get a list of car parks with free places around the current position sorted by price..... 14

 4.2.2.2 The user wants to display on the map the location of all his/her Facebook friends around the vehicle position (the profile picture is used to mark a friend’s position). .16

 4.2.2.3 The user wants to navigate to his/her doctor (the one listed in his/her phone contact book) if the office is open..... 17

 4.2.2.4 The user wants to watch a movie. The user requests a list of movies projected in nearby cinemas with description, cinema name and price, all sorted by start time..... 18

 4.2.2.5 The user creates a proximity alert along its route to receive a sound in case of dangerous area..... 19

13 4.3 Interfaces.....21

14

11 Introduction

2This document describes the API of the POIService component.

31.1 System Overview

4The GENIVI Software Platform is a platform consisting of standardized middleware, application layer interfaces and frame-
5works defined or adopted by the GENIVI Alliance.

61.2 Component Overview

7The POIService is a software component of the above mentioned GENIVI Software Platform that
8offers POI search to client applications.

12 Terminology

<i>Term</i>	<i>Description</i>
POI	Point of Interest
CAM	Content Access Module

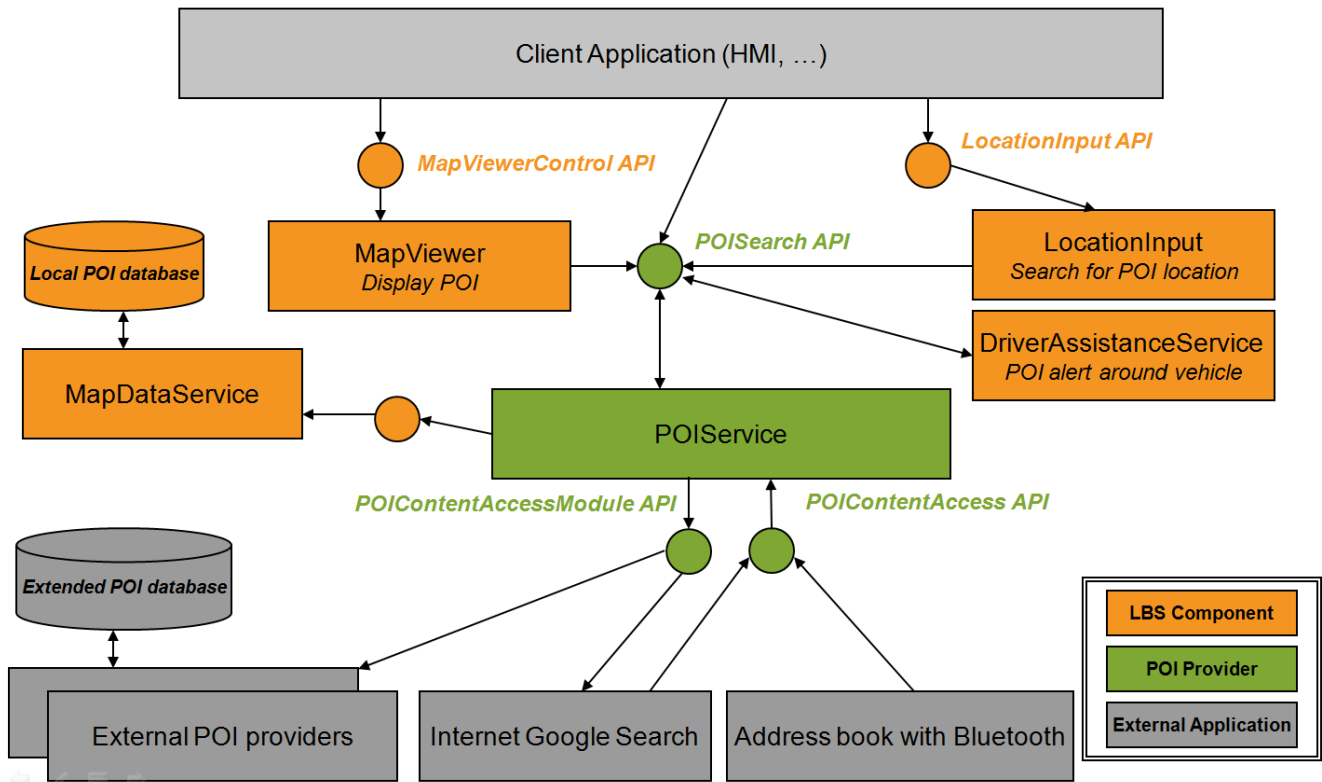
13 Architecture

23.1 Interfaces

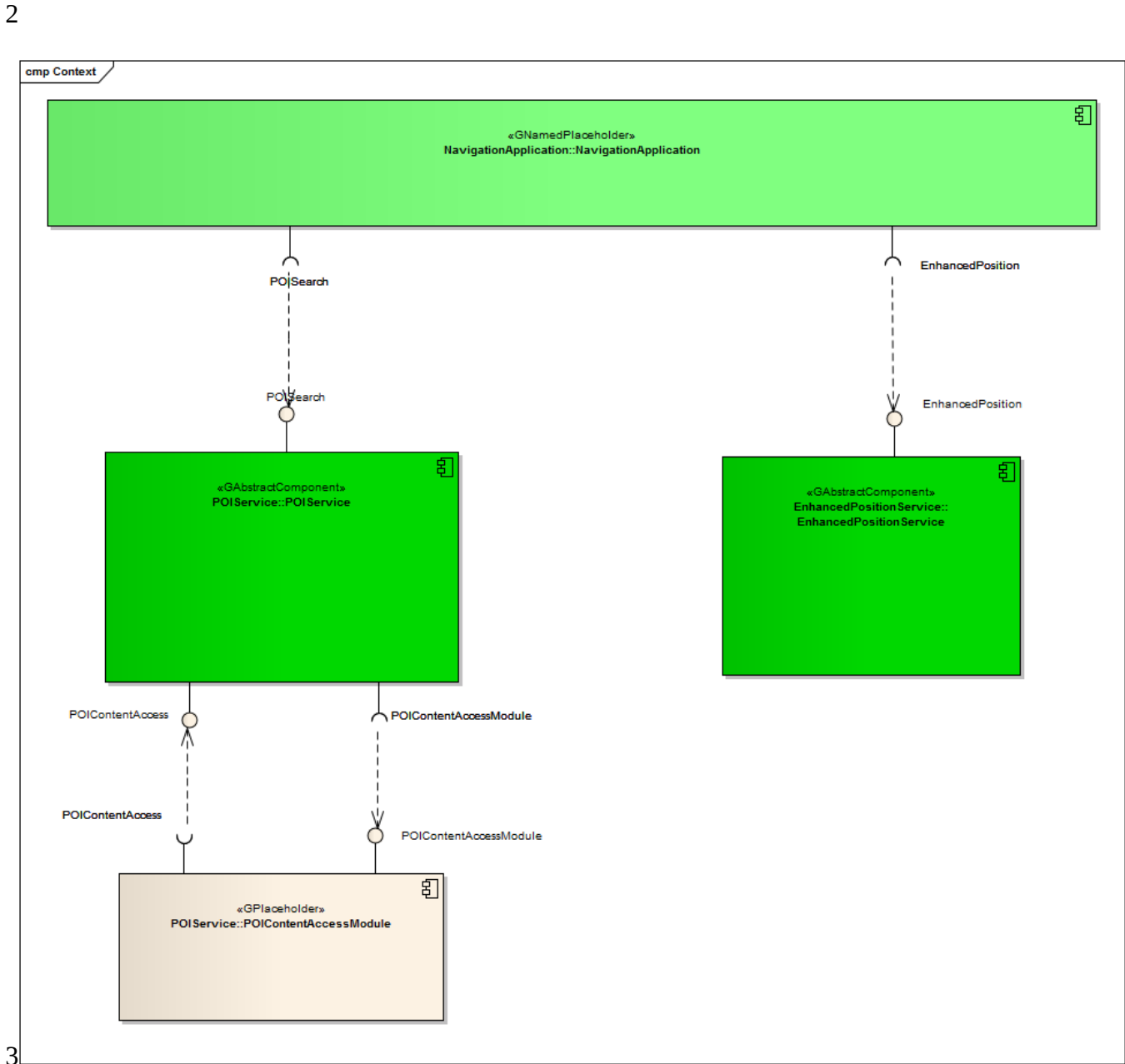
- POISearch

- POIContentAccess

- POIContentAccessModule



2
13.2 Interaction with other Components



14 API

24.1 *Git Repository*

3The POIService interfaces can be found in the GENIVI Git repository at:

4<https://github.com/GENIVI/navigation/tree/master/api/franca/navigation/poiservice>

54.2 *Use Cases*

64.2.1 *POI Search*

7

84.2.1.1 **The HMI displays the list of POI categories**

10**Description**

12The HMI retrieves the root category from the component (should be ALL_CATEGORIES).

13The HMI retrieves the children categories of the root category.

14For each child category, the HMI retrieves its children:

15If there are no children, the HMI retrieves the category details from the component and displays its name as a searchable category.

16It can also display its visual icon.

17For each child found, the HMI retrieves the children again and then displays the category name if there are no children.

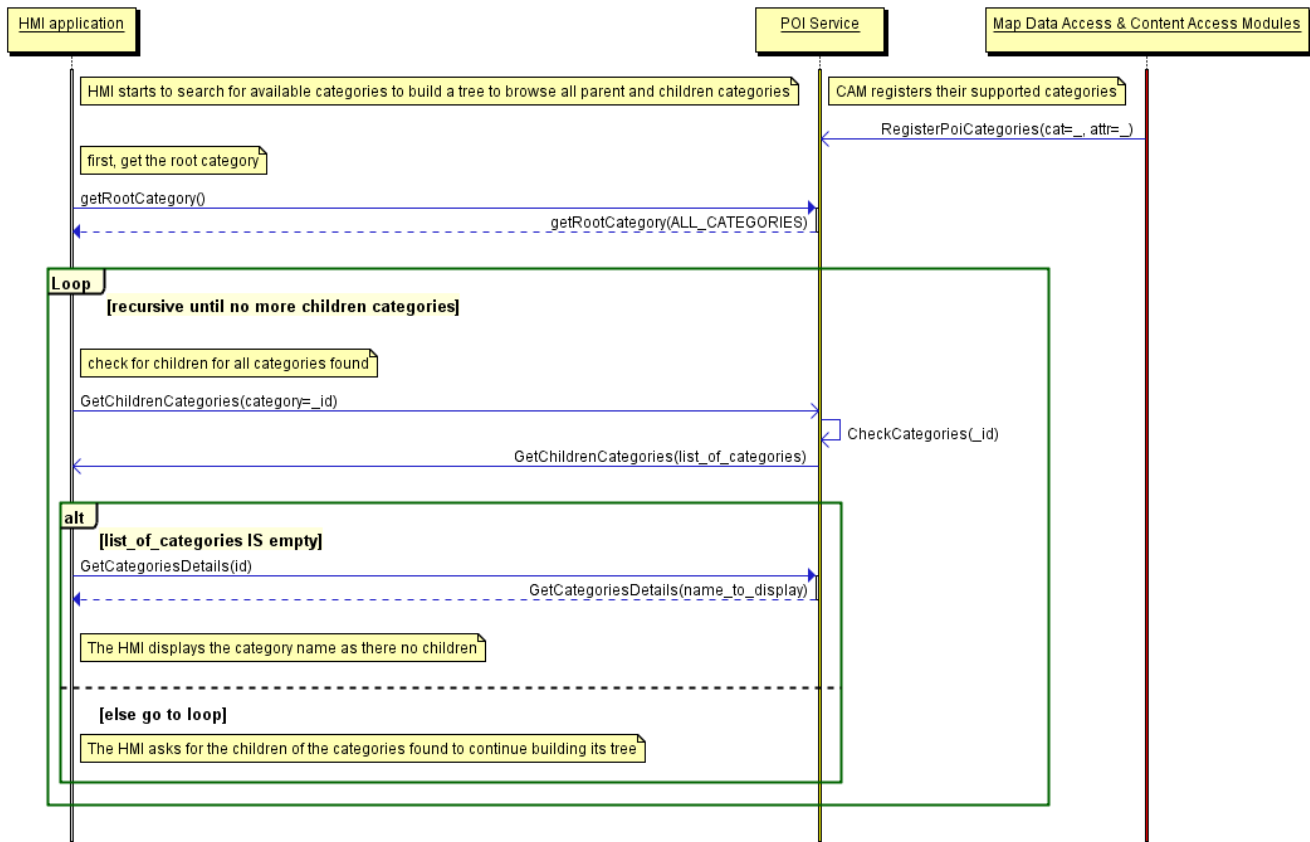
20**Error Management**

21Root category is not available.

22

24**Sequence diagram**

25



2

1

2.4.2.1.2 **The user searches for a restaurants around his/her position**

3

4**Description**

5

6The HMI retrieves the list of POI categories from the **search POI** API.

7The HMI retrieves the vehicle position from the **enhanced position** API.

8The HMI selects restaurant as a category and searches for POI around the vehicle position. It does not provide a search radius.

9The POIService component defines a default radius for the category *restaurant*.

10The POIService component searches for restaurant around the vehicle position within the local database.

11The POIService component provides the list of restaurants sorted by distance. It also provides basic details.

12The HMI browses the list and ask for detailed information for one of the POI.

13The POIService component gets detailed information from the local database.

14The HMI decides to drive to this restaurant.

15The POIService component provides the location of the restaurant.

16

17**Error Management**

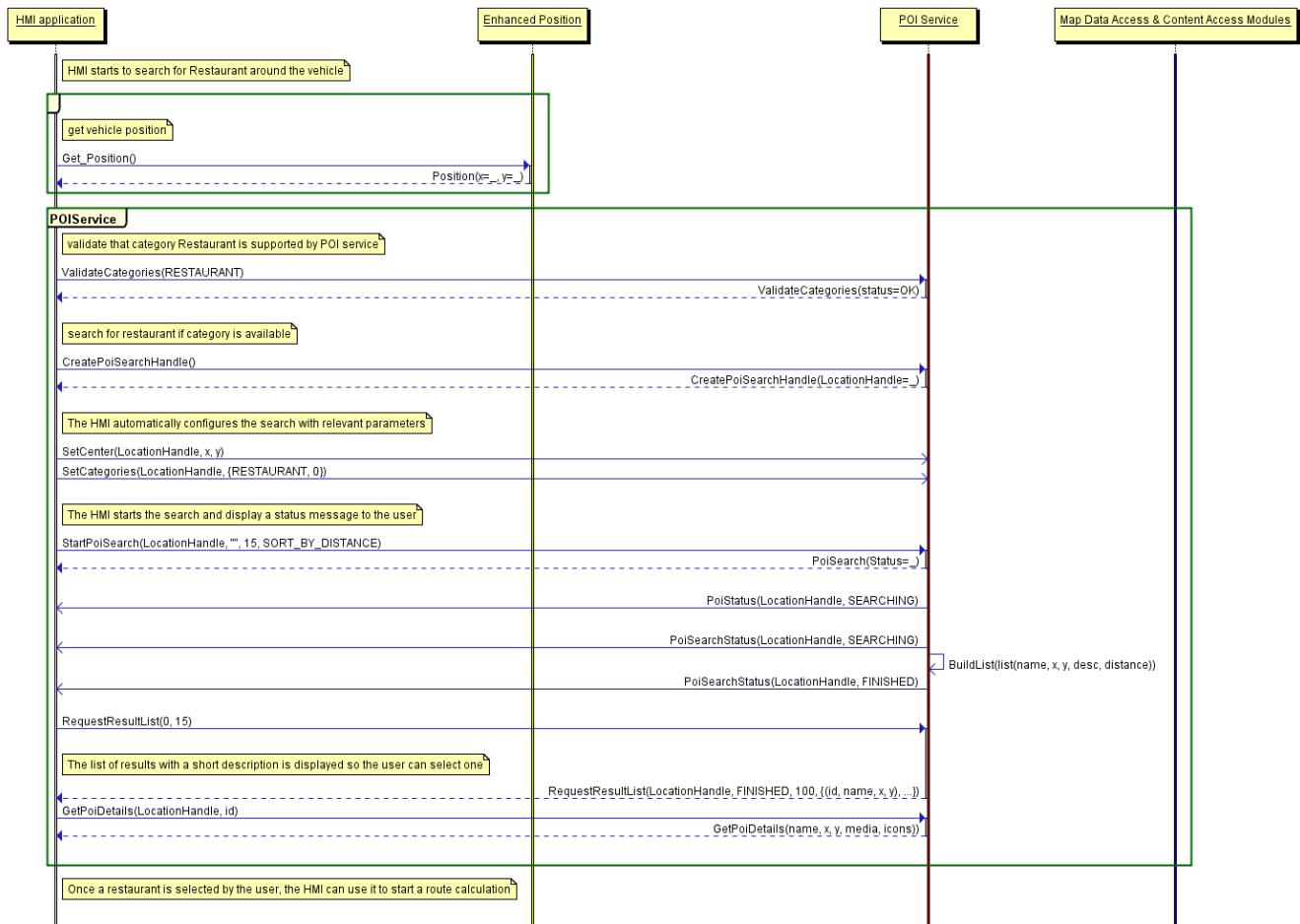
18If the local database access is down, the component returns an error.

20

21**Sequence diagram**

22

23



1.4.2.1.3

The user is running out of fuel and therefore creates a proximity alert around his/her position to receive a sound alert in case a new fuel station is detected

5 Preconditions

6 The fuel station is a category that is supported by the local database.

8 Description

9 The HMI configures a new POI proximity alert for fuel station around the vehicle.

10 The HMI retrieves the vehicle position and the vehicle speed from the **enhanced position** API.

11 The POIService component defines the search radius of 500 meters.

12 The POIService component gets the list of fuel stations around the current position from the local database using **map data access** API.

13 A new list of POI is sent to the HMI with all the fuel station that match the alert configuration.

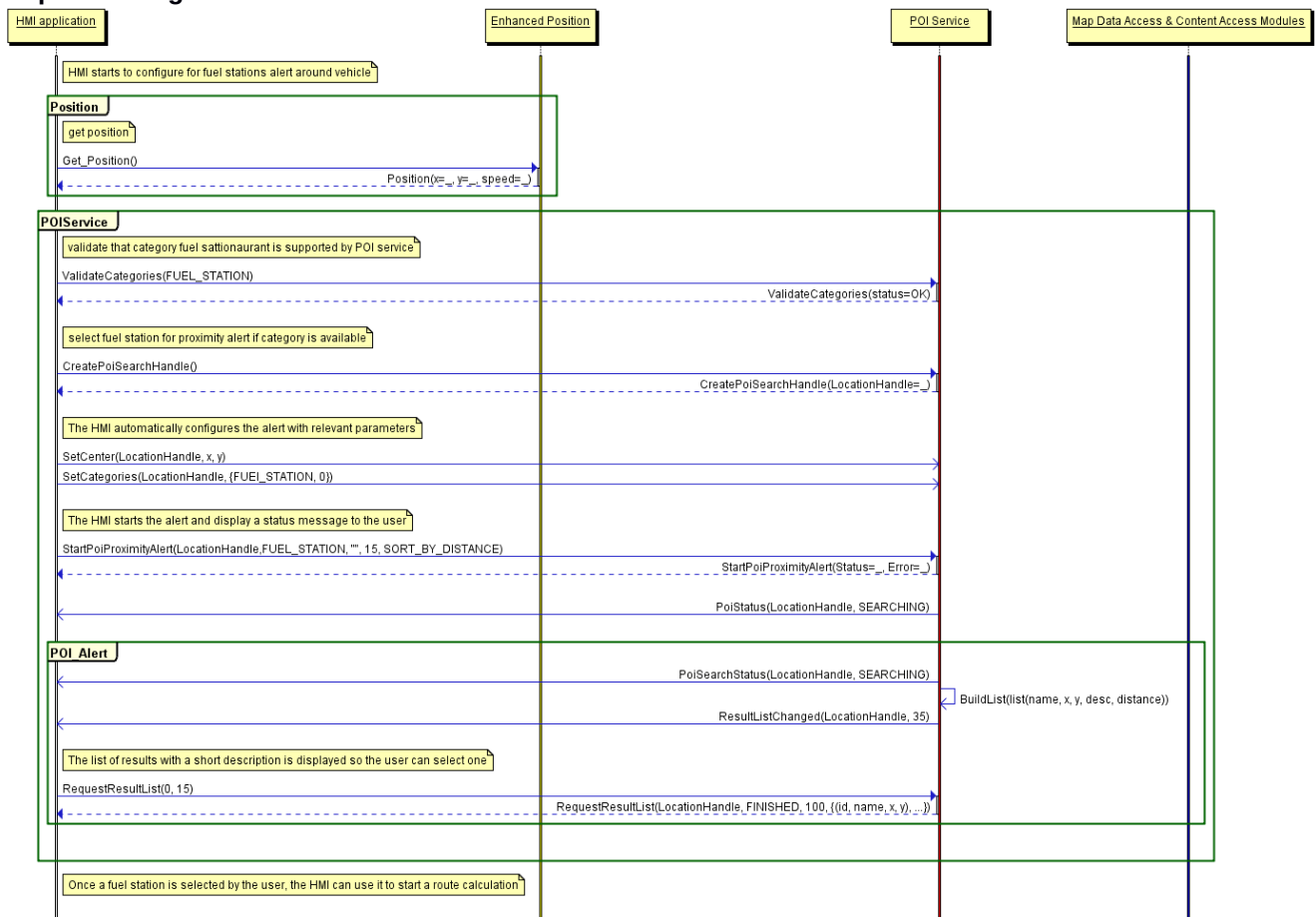
14 The HMI plays a sound when a new (non-empty) list of POI is received.

15 As soon as new fuel stations are available or current fuel stations are out the search radius, a new list is provided.

17 Error Management

18 If the local database access is down, the component returns an error.

21 Sequence diagram



14.2.2 POI Content Access

3_{4.2.2.1} **The user wants to get a list of car parks with free places around the current position sorted by price**

6**Preconditions**

7A plug-in was already installed in the POI Service component to access an identified online service that provides car park information (price and places left) from the name and coordinates of a car park.

10**Description**

11The HMI retrieves the vehicle position from the **enhanced position** API.

12The HMI retrieves the list of car parks with free places sorted by price around the position from the **search POI** API.

13The POIService component get the list of car parks around the current position from the local database using **map data access** API.

14For each car park name and location found, the POI Service uses **POI content access** API to get free places available and the park price from the plug-in (described below).

16The POIService component stores the result (all POI found with dynamic content) into the persistent storage to manage the 'connection-down' error. This content is deleted when it gets too old.

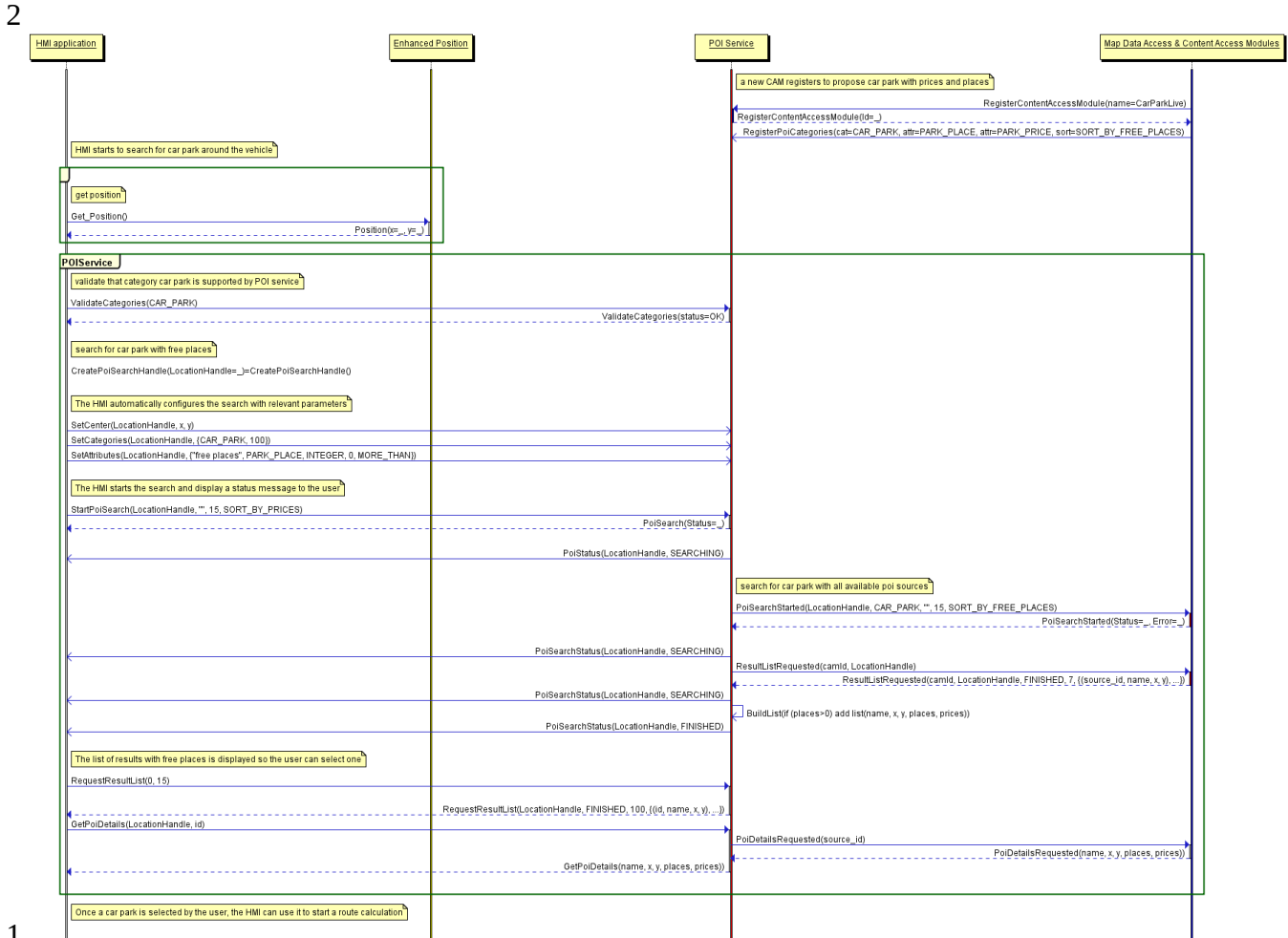
18The POIService component updates each car park attribute with available places and sorts the list by price.

20**Error Management**

21If the local database access is down, the component returns an error.

22If the network connection to the online provider is down, the content access module tries to retrieve latest content from its persistent storage (if any). If this content is too old (depends on CAM policy), it returns an error.

25**Sequence diagram**



1_{4.2.2.2} **The user wants to display on the map the location of all his/her Facebook**
2 **friends around the vehicle position (the profile picture is used to mark a**
3 **friend's position)**

5**Preconditions**

6A plug-in was already installed in the POI Service component to access Facebook services and extract the profile picture and the current address from a list of friends.

8This plug-in also registered a new POI category called **Facebook friends** and sub-category of predefined **User contact**.

9The MapViewer API provides a way to create a custom location on the map with coordinates, name and icons.

11**Description**

12The HMI retrieves the vehicle position from the **enhanced position** API.

13The HMI retrieves the list of Facebook friends from the **search POI** API around the vehicle position.

14POI Service components gets the list of Facebook friends (with photo, name and coordinates) around the current position from the Facebook plug-in **POI content access** API.

16The POI Service component stores the result into the persistent storage to manage the 'connection-down' error.

17This content is deleted when it gets too old.

18For each friend, the POI Service uses **MapViewer** API to update the map with icons.

20**Error Management**

21If the network connection to the online provider is down, the content access module tries to retrieve latest content from its persistent storage (if any). If this content is too old (1 hour), it returns an error.

1_{4.2.2.3} **The user wants to navigate to his/her doctor (the one listed in his/her phone
2 contact book) if the office is open**

4Preconditions

5A plug-in was already installed in the POI Service component to access a doctor's web site. The plug-in extracts the opening times and the
6doctor's office address.

7A plug-in was already installed in the POI Service component to access the user's smartphone. The plug-in extracts a contact list from a
8group of names (friend, family, doctor, ...).

9This plug-in created a new POI category called **My Phone Groups** with sub-categories like **friend** or **doctor**.

11Description

12The HMI retrieves the doctor's office coordinates and opening times from the user's phone POI group doctor with the **search POI** API.

13The POIService component gets the doctor's office opening time and coordinates from the smartphone contacts plug-in using the **POI con-
14tent access** API.

15The HMI validates that the opening times match current time and start a route calculation.

16The POIService component gets the doctor's office coordinates from previously stored data.

17The POIService uses **NavigationCore** API to start a route calculation from vehicle position to doctor's office.

19Error Management

20If the network connection to the online provider is down, the content access module returns an error.

2

1.4.2.2.4 **The user wants to watch a movie. The user requests a list of movies
 2 projected in nearby cinemas with description, cinema name and price, all
 3 sorted by start time**

4Preconditions

5A plug-in was already installed in the POI Service component to access an identified online service that provides cinema information (list of
 6movies, opening times, prices and movies information like review and trailer link) from the name and coordinates of a cinema.

8Description

9The HMI retrieves the vehicle position from the **enhanced position** API.

10The HMI retrieves the list of cinema with movies that starts in less than 1 hour around the current position from the **search POI** API. The list
 11is sorted by start time.

12The POIService component gets the list of cinemas around the current position from the local database using the **map data access** API.

13For each cinema name and location found, the POI Service uses **POI content access** API to get list of movies available with start time,
 14movie information and price from the plug-in (described below).

15The HMI display the list of movies sorted by start time (the sooner the first) with a quick description, a review, the price and the cinema
 16name.

17The rear seat HMI downloads a video from movie trailer link and displays it.

18Depending upon the selected film, the POIServicecomponent gets the cinema coordinates from previously stored data.

19The POIService uses **NavigationCore** API to start a route calculation from vehicle position to the cinema.

21Error Management

22If the local database access is down, the component returns an error

23If the network connection to the online provider is down, the content access module tries to retrieve latest content from its persistent storage

24(if any). If this content is too old (20 minutes), it returns an error.

25

2

1.4.2.2.5 **The user creates a proximity alert along its route to receive a sound in case of dangerous area**

3Preconditions

4A plug-in was already installed in the POI Service component to access an identified online service that provides dangerous area content (road conditions, weather, traffic jam, men at work) around a location.

6The dangerous area is a category that is supported by the local database.

7

8Description

9The HMI configures a new POI proximity alert for dangerous events in front of the vehicle.

10The HMI retrieves the vehicle position and speed from the **enhanced position** API.

11The POI component defines the search radius in front of vehicle position depending on the category and the vehicle speed.

12The POIService component gets the list of dangerous areas around the current position from the local database using the **map data access** API.

14The POIService component gets the list of dangerous events around the position from content access module according to its defined radius and criteria.

16The POIService component updates local events with dynamic contents if necessary.

17A new list of POI is sent to the HMI with all the events (from local and from CAM) that match the alert configuration.

18The HMI plays a sound when a new (non-empty) list of POI is received.

19

20Error Management

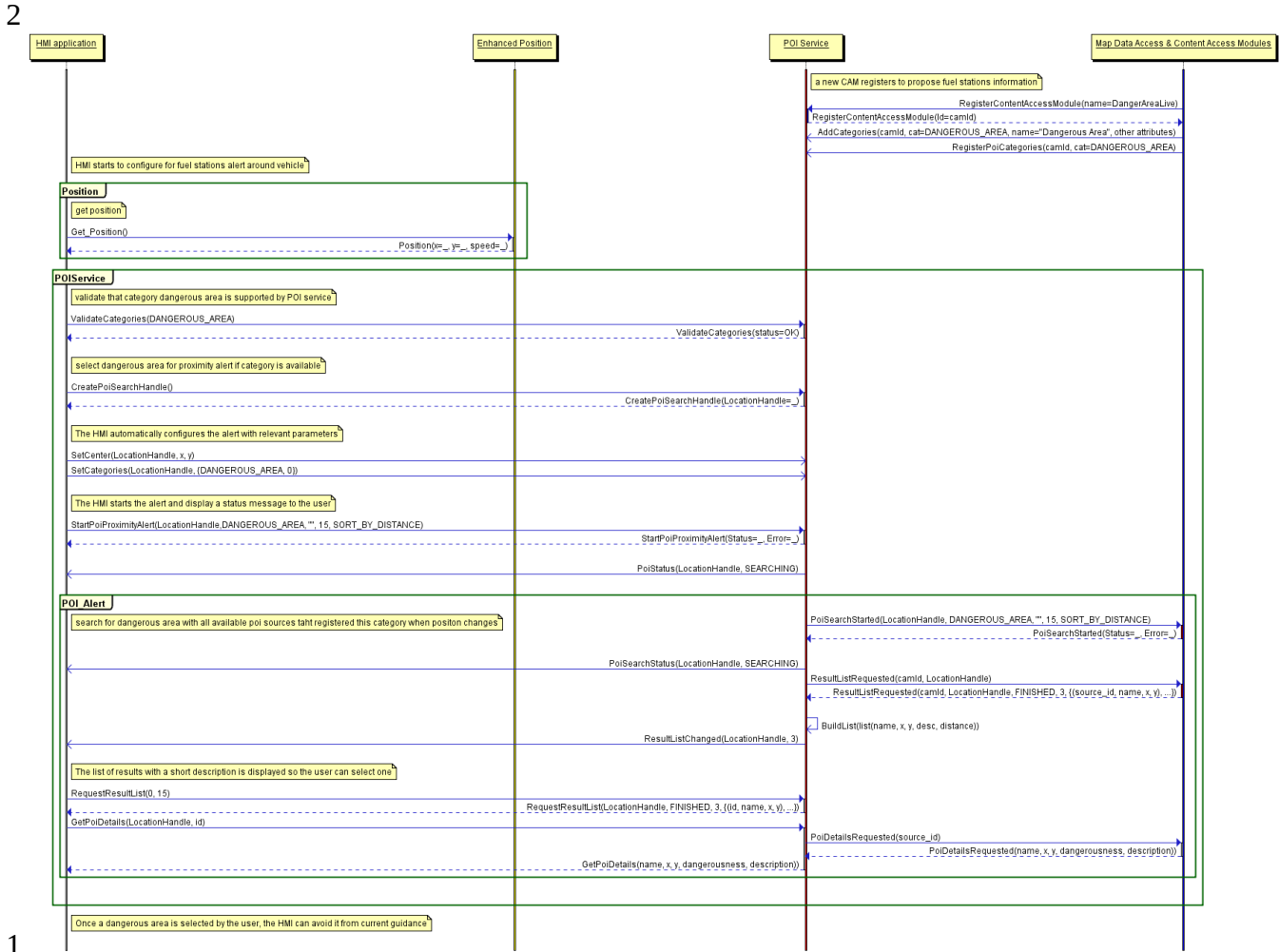
21If the local database access is down, the component returns an error.

22If the network connection to the online provider is down, the content access module tries to retrieve latest content from its persistent storage

23(if any). If this content is too old (more than 2 minutes), it returns an error.

25Sequence diagram

26



14.3 Interfaces

The following pages describe the interfaces of the POIService API.

POIService

Generated by Doxygen 1.8.13

Contents

1	Namespace Documentation	1
1.1	org Module Reference	1
1.2	org::genivi Module Reference	2
1.3	org::genivi::navigation Module Reference	2
1.4	org::genivi::navigation::poiservice Module Reference	2
2	Class Documentation	2
2.1	org::genivi::navigation::poiservice::POIServiceTypes::AttributeDetails Struct Reference	2
2.1.1	Member Data Documentation	2
2.2	org::genivi::navigation::poiservice::POIServiceTypes::AttributeValue Union Reference	3
2.2.1	Member Data Documentation	3
2.3	org::genivi::navigation::poiservice::POIServiceTypes::CAMCategory Struct Reference	4
2.3.1	Member Data Documentation	4
2.4	org::genivi::navigation::poiservice::POIServiceTypes::CAMCategoryUpdate Struct Reference	5
2.4.1	Member Data Documentation	5
2.5	org::genivi::navigation::poiservice::POIServiceTypes::Category Struct Reference	5
2.5.1	Member Data Documentation	5
2.6	org::genivi::navigation::poiservice::POIServiceTypes::CategoryAndLevel Struct Reference	6
2.6.1	Member Data Documentation	6
2.7	org::genivi::navigation::poiservice::POIServiceTypes::CategoryAndName Struct Reference	7
2.7.1	Member Data Documentation	7
2.8	org::genivi::navigation::poiservice::POIServiceTypes::CategoryAndRadius Struct Reference	7
2.8.1	Member Data Documentation	7
2.9	org::genivi::navigation::poiservice::POIServiceTypes::CategoryAndReason Struct Reference	8
2.9.1	Member Data Documentation	8
2.10	org::genivi::navigation::poiservice::POIServiceTypes::CategoryAndStatus Struct Reference	8
2.10.1	Member Data Documentation	8
2.11	org::genivi::navigation::poiservice::POIServiceTypes::CategoryAttribute Struct Reference	9
2.11.1	Member Data Documentation	9

2.12	org::genivi::navigation::poiservice::POIServiceTypes::CategoryDetails Struct Reference	10
2.12.1	Member Data Documentation	10
2.13	org::genivi::navigation::poiservice::POIServiceTypes::CategorySortOption Struct Reference	11
2.13.1	Member Data Documentation	11
2.14	org::genivi::navigation::poiservice::POIServiceTypes::Details Struct Reference	12
2.14.1	Member Data Documentation	12
2.15	org::genivi::navigation::poiservice::POIServiceTypes::Icon Union Reference	12
2.15.1	Member Data Documentation	13
2.16	org::genivi::navigation::poiservice::POIServiceTypes::Media Union Reference	13
2.16.1	Member Data Documentation	13
2.17	org::genivi::navigation::poiservice::POIServiceTypes::Operator Struct Reference	13
2.17.1	Member Data Documentation	14
2.18	org::genivi::navigation::poiservice::POIServiceTypes::PoiAddedDetails Struct Reference	14
2.18.1	Member Data Documentation	14
2.19	org::genivi::navigation::poiservice::POIServiceTypes::PoiAttribute Struct Reference	15
2.19.1	Member Data Documentation	15
2.20	org::genivi::navigation::poiservice::POIServiceTypes::PoiCAMDetails Struct Reference	15
2.20.1	Member Data Documentation	16
2.21	org::genivi::navigation::poiservice::POIConfiguration Interface Reference	16
2.21.1	Detailed Description	17
2.21.2	Member Typedef Documentation	17
2.21.3	Member Enumeration Documentation	17
2.21.4	Member Function Documentation	19
2.21.5	Member Data Documentation	20
2.22	org::genivi::navigation::poiservice::POIConfiguration_client Interface Reference	21
2.22.1	Member Function Documentation	21
2.23	org::genivi::navigation::poiservice::POIContentAccess Interface Reference	21
2.23.1	Detailed Description	22
2.23.2	Member Function Documentation	22
2.24	org::genivi::navigation::poiservice::POIContentAccessModule Interface Reference	23

2.24.1	Detailed Description	23
2.24.2	Member Function Documentation	23
2.25	org::genivi::navigation::poiservice::POIContentAccessModule_client Interface Reference	26
2.25.1	Member Function Documentation	26
2.26	org::genivi::navigation::poiservice::POIServiceTypes::PoiDetails Struct Reference	27
2.26.1	Member Data Documentation	28
2.27	org::genivi::navigation::poiservice::POISearch Interface Reference	28
2.27.1	Detailed Description	29
2.27.2	Member Function Documentation	29
2.28	org::genivi::navigation::poiservice::POISearch_client Interface Reference	32
2.28.1	Member Function Documentation	32
2.29	org::genivi::navigation::poiservice::POIServiceTypes Interface Reference	33
2.29.1	Member Typedef Documentation	34
2.29.2	Member Enumeration Documentation	35
2.30	org::genivi::navigation::poiservice::POIServiceTypes::SearchResult Struct Reference	40
2.30.1	Member Data Documentation	40
2.31	org::genivi::navigation::poiservice::POIServiceTypes::SearchResultDetails Struct Reference	41
2.31.1	Member Data Documentation	41
3	File Documentation	41
3.1	POIConfiguration.fidl File Reference	41
3.2	POIContentAccess.fidl File Reference	42
3.3	POIContentAccessModule.fidl File Reference	42
3.4	POISearch.fidl File Reference	42
3.5	POIServiceTypes.fidl File Reference	42
Index		45

1 Namespace Documentation

1.1 org Module Reference

Modules

- [genivi](#)

1.2 org::genivi Module Reference

Modules

- [navigation](#)

1.3 org::genivi::navigation Module Reference

Modules

- module [poiservice](#)

1.4 org::genivi::navigation::poiservice Module Reference

Classes

- interface [POIConfiguration](#)
- interface [POIConfiguration_client](#)
- interface [POIContentAccess](#)
- interface [POIContentAccessModule](#)
- interface [POIContentAccessModule_client](#)
- interface [POISearch](#)
- interface [POISearch_client](#)
- interface [POIServiceTypes](#)

2 Class Documentation

2.1 org::genivi::navigation::poiservice::POIServiceTypes::AttributeDetails Struct Reference

Public Attributes

- [AttributeID](#) id
- [CategoryID](#) categoryId
- [AttributeType](#) type
- [AttributeValue](#) value
- [OperatorType](#) oper
- Boolean [mandatory](#)

2.1.1 Member Data Documentation

2.1.1.1 categoryId

`CategoryID org::genivi::navigation::poiservice::POIServiceTypes::AttributeDetails::categoryId`

2.1.1.2 id

[AttributeID](#) org::genivi::navigation::poiservice::POIServiceTypes::AttributeDetails::id

2.1.1.3 mandatory

Boolean org::genivi::navigation::poiservice::POIServiceTypes::AttributeDetails::mandatory

2.1.1.4 oper

[OperatorType](#) org::genivi::navigation::poiservice::POIServiceTypes::AttributeDetails::oper

2.1.1.5 type

[AttributeType](#) org::genivi::navigation::poiservice::POIServiceTypes::AttributeDetails::type

2.1.1.6 value

[AttributeValue](#) org::genivi::navigation::poiservice::POIServiceTypes::AttributeDetails::value

The documentation for this struct was generated from the following file:

- [POIServiceTypes.fidl](#)

2.2 org::genivi::navigation::poiservice::POIServiceTypes::AttributeValue Union Reference

Public Attributes

- Int32 [intValue](#)
- String [stringValue](#)
- Boolean [boolValue](#)

2.2.1 Member Data Documentation

2.2.1.1 boolValue

Boolean org::genivi::navigation::poiservice::POIServiceTypes::AttributeValue::boolValue

2.2.1.2 intValue

```
Int32 org::genivi::navigation::poiservice::POIServiceTypes::AttributeValue::intValue
```

2.2.1.3 stringValue

```
String org::genivi::navigation::poiservice::POIServiceTypes::AttributeValue::stringValue
```

The documentation for this union was generated from the following file:

- [POIServiceTypes.fidl](#)

2.3 org::genivi::navigation::poiservice::POIServiceTypes::CAMCategory Struct Reference

Public Attributes

- [Details details](#)
- [CategoryAttribute \[\] attributeList](#)
- [CategorySortOption \[\] sortOptions](#)

2.3.1 Member Data Documentation

2.3.1.1 attributeList

```
CategoryAttribute [ ] org::genivi::navigation::poiservice::POIServiceTypes::CAMCategory←  
::attributeList
```

2.3.1.2 details

```
Details org::genivi::navigation::poiservice::POIServiceTypes::CAMCategory::details
```

2.3.1.3 sortOptions

```
CategorySortOption [ ] org::genivi::navigation::poiservice::POIServiceTypes::CAMCategory←  
::sortOptions
```

The documentation for this struct was generated from the following file:

- [POIServiceTypes.fidl](#)

2.4 org::genivi::navigation::poiservice::POIServiceTypes::CAMCategoryUpdate Struct Reference

Public Attributes

- [CategoryID](#) `id`
- [CategoryAttribute](#) [] `attributeList`
- [CategorySortOption](#) [] `sortOptions`

2.4.1 Member Data Documentation

2.4.1.1 attributeList

[CategoryAttribute](#) [] org::genivi::navigation::poiservice::POIServiceTypes::CAMCategoryUpdate::attributeList

2.4.1.2 id

[CategoryID](#) org::genivi::navigation::poiservice::POIServiceTypes::CAMCategoryUpdate::id

2.4.1.3 sortOptions

[CategorySortOption](#) [] org::genivi::navigation::poiservice::POIServiceTypes::CAMCategoryUpdate::sortOptions

The documentation for this struct was generated from the following file:

- [POIServiceTypes.fidl](#)

2.5 org::genivi::navigation::poiservice::POIServiceTypes::Category Struct Reference

Public Attributes

- [CategoryDetails](#) `details`
- [CategoryAttribute](#) [] `attributeList`
- [CategorySortOption](#) [] `sortOptions`

2.5.1 Member Data Documentation

2.5.1.1 attributeList

`CategoryAttribute` [] `org::genivi::navigation::poiservice::POIServiceTypes::Category::attribute↔
List`

2.5.1.2 details

`CategoryDetails` `org::genivi::navigation::poiservice::POIServiceTypes::Category::details`

2.5.1.3 sortOptions

`CategorySortOption` [] `org::genivi::navigation::poiservice::POIServiceTypes::Category::sort↔
Options`

The documentation for this struct was generated from the following file:

- [POIServiceTypes.fidl](#)

2.6 org::genivi::navigation::poiservice::POIServiceTypes::CategoryAndLevel Struct Reference

Public Attributes

- CategoryID [uniqueId](#)
- Boolean [topLevel](#)

2.6.1 Member Data Documentation

2.6.1.1 topLevel

Boolean `org::genivi::navigation::poiservice::POIServiceTypes::CategoryAndLevel::topLevel`

2.6.1.2 uniqueId

CategoryID `org::genivi::navigation::poiservice::POIServiceTypes::CategoryAndLevel::uniqueId`

The documentation for this struct was generated from the following file:

- [POIServiceTypes.fidl](#)

2.7 org::genivi::navigation::poiservice::POIServiceTypes::CategoryAndName Struct Reference

Public Attributes

- CategoryID [uniqueId](#)
- String [name](#)
- Boolean [topLevel](#)

2.7.1 Member Data Documentation

2.7.1.1 name

String org::genivi::navigation::poiservice::POIServiceTypes::CategoryAndName::name

2.7.1.2 topLevel

Boolean org::genivi::navigation::poiservice::POIServiceTypes::CategoryAndName::topLevel

2.7.1.3 uniqueId

CategoryID org::genivi::navigation::poiservice::POIServiceTypes::CategoryAndName::uniqueId

The documentation for this struct was generated from the following file:

- [POIServiceTypes.fidl](#)

2.8 org::genivi::navigation::poiservice::POIServiceTypes::CategoryAndRadius Struct Reference

Public Attributes

- CategoryID [id](#)
- UInt32 [radius](#)

2.8.1 Member Data Documentation

2.8.1.1 id

CategoryID org::genivi::navigation::poiservice::POIServiceTypes::CategoryAndRadius::id

2.8.1.2 radius

`UInt32 org::genivi::navigation::poiservice::POIServiceTypes::CategoryAndRadius::radius`

The documentation for this struct was generated from the following file:

- [POIServiceTypes.fidl](#)

2.9 org::genivi::navigation::poiservice::POIServiceTypes::CategoryAndReason Struct Reference

Public Attributes

- CategoryID [unique_id](#)
- [UpdateReason](#) [reason](#)

2.9.1 Member Data Documentation

2.9.1.1 reason

`UpdateReason org::genivi::navigation::poiservice::POIServiceTypes::CategoryAndReason::reason`

2.9.1.2 unique_id

`CategoryID org::genivi::navigation::poiservice::POIServiceTypes::CategoryAndReason::unique_id`

The documentation for this struct was generated from the following file:

- [POIServiceTypes.fidl](#)

2.10 org::genivi::navigation::poiservice::POIServiceTypes::CategoryAndStatus Struct Reference

Public Attributes

- CategoryID [uniqueid](#)
- Boolean [status](#)

2.10.1 Member Data Documentation

2.10.1.1 status

`Boolean org::genivi::navigation::poiservice::POIServiceTypes::CategoryAndStatus::status`

2.10.1.2 uniqueId

CategoryID org::genivi::navigation::poiservice::POIServiceTypes::CategoryAndStatus::uniqueId

The documentation for this struct was generated from the following file:

- [POIServiceTypes.fidl](#)

2.11 org::genivi::navigation::poiservice::POIServiceTypes::CategoryAttribute Struct Reference

Public Attributes

- [AttributeID](#) id
- [String](#) name
- [AttributeType](#) type
- [Operator](#) [] operators

2.11.1 Member Data Documentation

2.11.1.1 id

[AttributeID](#) org::genivi::navigation::poiservice::POIServiceTypes::CategoryAttribute::id

2.11.1.2 name

[String](#) org::genivi::navigation::poiservice::POIServiceTypes::CategoryAttribute::name

2.11.1.3 operators

[Operator](#) [] org::genivi::navigation::poiservice::POIServiceTypes::CategoryAttribute::operators

2.11.1.4 type

[AttributeType](#) org::genivi::navigation::poiservice::POIServiceTypes::CategoryAttribute::type

The documentation for this struct was generated from the following file:

- [POIServiceTypes.fidl](#)

2.12 org::genivi::navigation::poiservice::POIServiceTypes::CategoryDetails Struct Reference

Public Attributes

- CategoryID [uniqueId](#)
- [StandardCategory](#) [standardCategoryId](#)
- CategoryID [] [parentsId](#)
- [Icon](#) [icons](#)
- String [name](#)
- Boolean [topLevel](#)
- String [description](#)
- [Media](#) [media](#)

2.12.1 Member Data Documentation

2.12.1.1 description

String org::genivi::navigation::poiservice::POIServiceTypes::CategoryDetails::description

2.12.1.2 icons

[Icon](#) org::genivi::navigation::poiservice::POIServiceTypes::CategoryDetails::icons

2.12.1.3 media

[Media](#) org::genivi::navigation::poiservice::POIServiceTypes::CategoryDetails::media

2.12.1.4 name

String org::genivi::navigation::poiservice::POIServiceTypes::CategoryDetails::name

2.12.1.5 parentsId

CategoryID [] org::genivi::navigation::poiservice::POIServiceTypes::CategoryDetails::parents↔
Id

2.12.1.6 standardCategoryId

`StandardCategory` org::genivi::navigation::poiservice::POIServiceTypes::CategoryDetails::standardCategoryId

2.12.1.7 topLevel

`Boolean` org::genivi::navigation::poiservice::POIServiceTypes::CategoryDetails::topLevel

2.12.1.8 uniqueId

`CategoryID` org::genivi::navigation::poiservice::POIServiceTypes::CategoryDetails::uniqueId

The documentation for this struct was generated from the following file:

- [POIServiceTypes.fidl](#)

2.13 org::genivi::navigation::poiservice::POIServiceTypes::CategorySortOption Struct Reference

Public Attributes

- `CategoryID` [id](#)
- `String` [name](#)

2.13.1 Member Data Documentation

2.13.1.1 id

`CategoryID` org::genivi::navigation::poiservice::POIServiceTypes::CategorySortOption::id

2.13.1.2 name

`String` org::genivi::navigation::poiservice::POIServiceTypes::CategorySortOption::name

The documentation for this struct was generated from the following file:

- [POIServiceTypes.fidl](#)

2.14 org::genivi::navigation::poiservice::POIServiceTypes::Details Struct Reference

Public Attributes

- CategoryID [] [parentsId](#)
- [Icon](#) [icons](#)
- String [name](#)
- String [shortDesc](#)
- [Media](#) [media](#)

2.14.1 Member Data Documentation

2.14.1.1 icons

[Icon](#) org::genivi::navigation::poiservice::POIServiceTypes::Details::icons

2.14.1.2 media

[Media](#) org::genivi::navigation::poiservice::POIServiceTypes::Details::media

2.14.1.3 name

String org::genivi::navigation::poiservice::POIServiceTypes::Details::name

2.14.1.4 parentsId

CategoryID [] org::genivi::navigation::poiservice::POIServiceTypes::Details::parentsId

2.14.1.5 shortDesc

String org::genivi::navigation::poiservice::POIServiceTypes::Details::shortDesc

The documentation for this struct was generated from the following file:

- [POIServiceTypes.fidl](#)

2.15 org::genivi::navigation::poiservice::POIServiceTypes::Icon Union Reference

Public Attributes

- [ResourceID](#) [] [id](#)
- String [url](#)

2.15.1 Member Data Documentation

2.15.1.1 id

[ResourceID](#) [] org::genivi::navigation::poiservice::POIServiceTypes::Icon::id

2.15.1.2 url

String org::genivi::navigation::poiservice::POIServiceTypes::Icon::url

The documentation for this union was generated from the following file:

- [POIServiceTypes.fidl](#)

2.16 org::genivi::navigation::poiservice::POIServiceTypes::Media Union Reference

Public Attributes

- [ResourceID](#) [] id
- String url

2.16.1 Member Data Documentation

2.16.1.1 id

[ResourceID](#) [] org::genivi::navigation::poiservice::POIServiceTypes::Media::id

2.16.1.2 url

String org::genivi::navigation::poiservice::POIServiceTypes::Media::url

The documentation for this union was generated from the following file:

- [POIServiceTypes.fidl](#)

2.17 org::genivi::navigation::poiservice::POIServiceTypes::Operator Struct Reference

Public Attributes

- [OperatorType](#) type
- String name
- [AttributeValue](#) value

2.17.1 Member Data Documentation

2.17.1.1 name

String org::genivi::navigation::poiservice::POIServiceTypes::Operator::name

2.17.1.2 type

[OperatorType](#) org::genivi::navigation::poiservice::POIServiceTypes::Operator::type

2.17.1.3 value

[AttributeValue](#) org::genivi::navigation::poiservice::POIServiceTypes::Operator::value

The documentation for this struct was generated from the following file:

- [POIServiceTypes.fidl](#)

2.18 org::genivi::navigation::poiservice::POIServiceTypes::PoiAddedDetails Struct Reference

Public Attributes

- String [name](#)
- Coordinate3D [location](#)
- [PoiAttribute](#) [] [attributeList](#)

2.18.1 Member Data Documentation

2.18.1.1 attributeList

[PoiAttribute](#) [] org::genivi::navigation::poiservice::POIServiceTypes::PoiAddedDetails::attribute←
List

2.18.1.2 location

Coordinate3D org::genivi::navigation::poiservice::POIServiceTypes::PoiAddedDetails::location

2.18.1.3 name

`String org::genivi::navigation::poiservice::POIServiceTypes::PoiAddedDetails::name`

The documentation for this struct was generated from the following file:

- [POIServiceTypes.fidl](#)

2.19 org::genivi::navigation::poiservice::POIServiceTypes::PoiAttribute Struct Reference

Public Attributes

- [AttributeID](#) id
- [AttributeType](#) type
- [AttributeValue](#) value

2.19.1 Member Data Documentation

2.19.1.1 id

`AttributeID org::genivi::navigation::poiservice::POIServiceTypes::PoiAttribute::id`

2.19.1.2 type

`AttributeType org::genivi::navigation::poiservice::POIServiceTypes::PoiAttribute::type`

2.19.1.3 value

`AttributeValue org::genivi::navigation::poiservice::POIServiceTypes::PoiAttribute::value`

The documentation for this struct was generated from the following file:

- [POIServiceTypes.fidl](#)

2.20 org::genivi::navigation::poiservice::POIServiceTypes::PoiCAMDetails Struct Reference

Public Attributes

- [POI_ID](#) sourceId
- [String](#) name
- [CategoryID](#) category
- [Coordinate3D](#) location
- [UInt16](#) distance
- [PoiAttribute](#) [] attributeList

2.20.1 Member Data Documentation

2.20.1.1 attributeList

`PoiAttribute [] org::genivi::navigation::poiservice::POIServiceTypes::PoiCAMDetails::attributeList`

2.20.1.2 category

`CategoryID org::genivi::navigation::poiservice::POIServiceTypes::PoiCAMDetails::category`

2.20.1.3 distance

`UInt16 org::genivi::navigation::poiservice::POIServiceTypes::PoiCAMDetails::distance`

2.20.1.4 location

`Coordinate3D org::genivi::navigation::poiservice::POIServiceTypes::PoiCAMDetails::location`

2.20.1.5 name

`String org::genivi::navigation::poiservice::POIServiceTypes::PoiCAMDetails::name`

2.20.1.6 sourceId

`POI_ID org::genivi::navigation::poiservice::POIServiceTypes::PoiCAMDetails::sourceId`

The documentation for this struct was generated from the following file:

- [POIServiceTypes.fidl](#)

2.21 org::genivi::navigation::poiservice::POIConfiguration Interface Reference

Public Types

- enum `UnitsOfMeasurementAttribute` { `INVALID` = 0, `LENGTH` = 49 }
- enum `UnitsOfMeasurementValue` { `METER` = 50, `MILE` = 51, `KM` = 52, `YARD` = 53, `FOOT` = 54 }
- enum `Units` { `METER` = 50, `MILE` = 51, `KM` = 52, `YARD` = 53, `FOOT` = 54 }
- enum `TimeFormat` { `INVALID` = 0, `TWELVEH` = 1, `TWENTYFOURH` = 2 }
- enum `CoordinatesFormat` { `INVALID` = 0, `DEGREES` = 1, `MINUTES` = 2, `SECONDS` = 3 }
- typedef `UnitsOfMeasurementValue [] UnitsOfMeasurementListValue`

Public Member Functions

- void [getVersion](#) (out Version version)
- void [setLocale](#) (in String languageCode, in String countryCode, in String scriptCode)
- void [getLocale](#) (out String languageCode, out String countryCode, out String scriptCode)
- void [getSupportedLocales](#) (out Locale localeList)
- void [setTimeFormat](#) (in [TimeFormat](#) format)
- void [getTimeFormat](#) (out [TimeFormat](#) format)
- void [getSupportedTimeFormats](#) (out [TimeFormat](#) timeFormatList)
- void [setCoordinatesFormat](#) (in [CoordinatesFormat](#) coordinatesFormat)
- void [getCoordinatesFormat](#) (out [CoordinatesFormat](#) coordinatesFormat)
- void [getSupportedCoordinatesFormat](#) (out [CoordinatesFormat](#) coordinatesFormatList)
- void [setUnitsOfMeasurement](#) (in UnitsOfMeasurement unitsOfMeasurementList)
- void [getUnitsOfMeasurement](#) (out UnitsOfMeasurement unitsOfMeasurementList)
- void [getSupportedUnitsOfMeasurement](#) (out UnitsOfMeasurementList unitsOfMeasurementList)

Public Attributes

- map_UnitsOfMeasurement [UnitsOfMeasurementAttribute](#) =>[UnitsOfMeasurementValue](#)
- map_UnitsOfMeasurementList [UnitsOfMeasurementAttribute](#) =>[UnitsOfMeasurementListValue](#)

2.21.1 Detailed Description

#comment : This interface offers methods that implement the POI configuration functionality of a navigation system.

2.21.2 Member Typedef Documentation

2.21.2.1 UnitsOfMeasurementListValue

```
typedef UnitsOfMeasurementValue [ ] org::genivi::navigation::poiservice::POIConfiguration::UnitsOfMeasurementListValue
```

2.21.3 Member Enumeration Documentation

2.21.3.1 CoordinatesFormat

```
enum org::genivi::navigation::poiservice::POIConfiguration::CoordinatesFormat
```

Enumerator

INVALID	
DEGREES	
MINUTES	
SECONDS	

2.21.3.2 TimeFormat

```
enum org::genivi::navigation::poiservice::POIConfiguration::TimeFormat
```

Enumerator

INVALID	
TWELVEH	
TWENTYFOURH	

2.21.3.3 Units

```
enum org::genivi::navigation::poiservice::POIConfiguration::Units
```

Enumerator

METER	
MILE	
KM	
YARD	
FOOT	

2.21.3.4 UnitsOfMeasurementAttribute

```
enum org::genivi::navigation::poiservice::POIConfiguration::UnitsOfMeasurementAttribute
```

Enumerator

INVALID	
LENGTH	

2.21.3.5 UnitsOfMeasurementValue

```
enum org::genivi::navigation::poiservice::POIConfiguration::UnitsOfMeasurementValue
```

Enumerator

METER	
MILE	
KM	
YARD	
FOOT	

2.21.4 Member Function Documentation

2.21.4.1 getCoordinatesFormat()

```
void org::genivi::navigation::poiservice::POIConfiguration::getCoordinatesFormat (
    out CoordinatesFormat coordinatesFormat )
```

#comment : Get the coordinates format .

2.21.4.2 getLocale()

```
void org::genivi::navigation::poiservice::POIConfiguration::getLocale (
    out String languageCode,
    out String countryCode,
    out String scriptCode )
```

#comment : Get the current language set .

2.21.4.3 getSupportedCoordinatesFormat()

```
void org::genivi::navigation::poiservice::POIConfiguration::getSupportedCoordinatesFormat (
    out CoordinatesFormat coordinatesFormatList )
```

#comment : Get the supported set of coordinates format .

2.21.4.4 getSupportedLocales()

```
void org::genivi::navigation::poiservice::POIConfiguration::getSupportedLocales (
    out Locale localeList )
```

#comment : Get the supported set of locales .

2.21.4.5 getSupportedTimeFormats()

```
void org::genivi::navigation::poiservice::POIConfiguration::getSupportedTimeFormats (
    out TimeFormat timeFormatList )
```

#comment : Get the supported set of time format .

2.21.4.6 getSupportedUnitsOfMeasurement()

```
void org::genivi::navigation::poiservice::POIConfiguration::getSupportedUnitsOfMeasurement (
    out UnitsOfMeasurementList unitsOfMeasurementList )
```

#comment : Get the supported set of units of measurement .

2.21.4.7 getTimeFormat()

```
void org::genivi::navigation::poiservice::POIConfiguration::getTimeFormat (
    out TimeFormat format )
```

#comment : Get the current time format .

2.21.4.8 getUnitsOfMeasurement()

```
void org::genivi::navigation::poiservice::POIConfiguration::getUnitsOfMeasurement (
    out UnitsOfMeasurement unitsOfMeasurementList )
```

#comment : Get the units of measurement .

2.21.4.9 getVersion()

```
void org::genivi::navigation::poiservice::POIConfiguration::getVersion (
    out Version version )
```

#comment : This method returns the API version .

2.21.4.10 setCoordinatesFormat()

```
void org::genivi::navigation::poiservice::POIConfiguration::setCoordinatesFormat (
    in CoordinatesFormat coordinatesFormat )
```

#comment : Set the coordinates format.

2.21.4.11 setLocale()

```
void org::genivi::navigation::poiservice::POIConfiguration::setLocale (
    in String languageCode,
    in String countryCode,
    in String scriptCode )
```

#comment : Set the current language set. If the language is not supported, the default details will be returned in the native language.

2.21.4.12 setTimeFormat()

```
void org::genivi::navigation::poiservice::POIConfiguration::setTimeFormat (
    in TimeFormat format )
```

#comment : Set the time format.

2.21.4.13 setUnitsOfMeasurement()

```
void org::genivi::navigation::poiservice::POIConfiguration::setUnitsOfMeasurement (
    in UnitsOfMeasurement unitsOfMeasurementList )
```

#comment : Set the units of measurement .

2.21.5 Member Data Documentation

2.21.5.1 UnitsOfMeasurementAttribute [1/2]

```
map_UnitsOfMeasurement org::genivi::navigation::poiservice::POIConfiguration::UnitsOfMeasurement↔  
Attribute =>UnitsOfMeasurementValue
```

2.21.5.2 UnitsOfMeasurementAttribute [2/2]

```
map_UnitsOfMeasurementList org::genivi::navigation::poiservice::POIConfiguration::UnitsOf↔  
MeasurementAttribute =>UnitsOfMeasurementListValue
```

The documentation for this interface was generated from the following file:

- [POIConfiguration.fidl](#)

2.22 org::genivi::navigation::poiservice::POIConfiguration_client Interface Reference

Public Member Functions

- void [configurationChanged](#) (in Settings changedSettings)

2.22.1 Member Function Documentation

2.22.1.1 configurationChanged()

```
void org::genivi::navigation::poiservice::POIConfiguration_client::configurationChanged (  
    in Settings changedSettings )
```

broadcast #comment : ConfigurationChanged = This signal is sent to the clients when one or more configuration settings changes

The documentation for this interface was generated from the following file:

- [POIConfiguration.fidl](#)

2.23 org::genivi::navigation::poiservice::POIContentAccess Interface Reference

Public Member Functions

- void [registerContentAccessModule](#) (in String moduleName, out ContentAccessModuleID camId)
- void [unRegisterContentAccessModule](#) (in ContentAccessModuleID camId)
- void [registerPoiCategories](#) (in ContentAccessModuleID camId, in CategoryID poiCategories)
- void [updateCategories](#) (in ContentAccessModuleID camId, in CAMCategoryUpdate poiCategories)
- void [addCategories](#) (in ContentAccessModuleID camId, in CAMCategory poiCategories, out CategoryID poiCategoriesId)
- void [removeCategories](#) (in ContentAccessModuleID camId, in CategoryID poiCategories)

2.23.1 Detailed Description

#comment : This interface offers a set of common methods for Content Access Modules (CAM). The CAM provide and update POI and categories information from remote sources to the POIService modules.

2.23.2 Member Function Documentation

2.23.2.1 addCategories()

```
void org::genivi::navigation::poiservice::POIContentAccess::addCategories (
    in ContentAccessModuleID camId,
    in CAMCategory poiCategories,
    out CategoryID poiCategoriesId )
```

#comment : Add new categories to the POI service component. The CAM provides for each categories the name, the parent categories, the top level attribute, the list of attributes, the icons,

2.23.2.2 registerContentAccessModule()

```
void org::genivi::navigation::poiservice::POIContentAccess::registerContentAccessModule (
    in String moduleName,
    out ContentAccessModuleID camId )
```

#comment : Register to the POI provider module When the CAM registers, it provides a name and then get a unique id. This id must be used everytime the CAM communicates with the POI service component. After the registration is done, the CAM can start to update POI categories and POI attributes as well as registers POI categories to search for.

2.23.2.3 registerPoiCategories()

```
void org::genivi::navigation::poiservice::POIContentAccess::registerPoiCategories (
    in ContentAccessModuleID camId,
    in CategoryID poiCategories )
```

#comment : Register to the POI provider module the categories you can search for POI. The categories could be predefined one or customized ones. In order to register a customized category, you might need to create it before and add it to the POI service component.

2.23.2.4 removeCategories()

```
void org::genivi::navigation::poiservice::POIContentAccess::removeCategories (
    in ContentAccessModuleID camId,
    in CategoryID poiCategories )
```

#comment : Remove categories from the POI service component. It could be a predefined or a customed one. Depending on the local database write policy, the CAM might only not be able to remove some categories.

2.23.2.5 unRegisterContentAccessModule()

```
void org::genivi::navigation::poiservice::POIContentAccess::unRegisterContentAccessModule (
    in ContentAccessModuleID camId )
```

#comment : Remove CAM from POI provider module.

2.23.2.6 updateCategories()

```
void org::genivi::navigation::poiservice::POIContentAccess::updateCategories (
    in ContentAccessModuleID camId,
    in CAMCategoryUpdate poiCategories )
```

#comment : Update categories in the POI service component. It could be a predefined or a customed one. The CAM provides for each categories the list of attributes (mandatories like name or optional) it wants to update. Depending on the local database write policy, the CAM might only be able to update customized attributes for a category and not the predefined ones so some update could be rejected.

The documentation for this interface was generated from the following file:

- [POIContentAccess.fidl](#)

2.24 org::genivi::navigation::poiservice::POIContentAccessModule Interface Reference

Public Member Functions

- void [getVersion](#) (out Version version)
- void [setLocale](#) (in String languageCode, in String countryCode, in String scriptCode)
- void [getLocale](#) (out String languageCode, out String countryCode, out String scriptCode)
- void [getSupportedLocales](#) (out Locale localeList)
- void [getAvailableCategories](#) (out CategoryAndName categories)
- void [getRootCategory](#) (out CategoryID category)
- void [getChildrenCategories](#) (in CategoryID category, out CategoryAndLevel categories)
- void [getParentCategories](#) (in CategoryID category, out CategoryAndLevel categories)
- void [createCategory](#) (in CAMCategory category, out CategoryID unique_id)
- void [removeCategories](#) (in CategoryID categories)
- void [addPOIs](#) (in CategoryID unique_id, in PoiAddedDetails poiList)
- void [removePOIs](#) (in POI_ID ids)
- void [poiSearchStarted](#) (in Handle poiSearchHandle, in UInt16 maxSize, in Coordinate3D location, in CategoryAndRadius poiCategories, in AttributeDetails poiAttributes, in String inputString, in SortOption sort↔ Option)
- void [poiSearchCanceled](#) (in Handle poiSearchHandle)
- void [resultListRequested](#) (in ContentAccessModuleID camId, in Handle poiSearchHandle, in AttributeID attributeList, out SearchStatusState statusValue, out UInt16 resultListSize, out PoiCAMDetails resultList)
- void [poiDetailsRequested](#) (in POI_ID source_id, out SearchResultDetails results)

2.24.1 Detailed Description

#comment : This interface offers methods that implement the POI search functionality of a navigation system.

2.24.2 Member Function Documentation

2.24.2.1 addPOIs()

```
void org::genivi::navigation::poiservice::POIContentAccessModule::addPOIs (
    in CategoryID unique_id,
    in PoiAddedDetails poiList )
```

#comment : Adds a list of POIs to a category. Because of required time to add it to the database, a signal is emitted when the update is done, that gives the id of the elements added

2.24.2.2 createCategory()

```
void org::genivi::navigation::poiservice::POIContentAccessModule::createCategory (
    in CAMCategory category,
    out CategoryID unique_id )
```

#comment : Creates a category by name and return an unique id.

2.24.2.3 getAvailableCategories()

```
void org::genivi::navigation::poiservice::POIContentAccessModule::getAvailableCategories (
    out CategoryAndName categories )
```

#comment : This method retrieves the list of POI categories available (pre-defined and custom).

2.24.2.4 getChildrenCategories()

```
void org::genivi::navigation::poiservice::POIContentAccessModule::getChildrenCategories (
    in CategoryID category,
    out CategoryAndLevel categories )
```

#comment : Get the children categories id and type (top level) from the a parent unique id.

2.24.2.5 getLocale()

```
void org::genivi::navigation::poiservice::POIContentAccessModule::getLocale (
    out String languageCode,
    out String countryCode,
    out String scriptCode )
```

#comment : Get the current language set for the search by poi provider module.

2.24.2.6 getParentCategories()

```
void org::genivi::navigation::poiservice::POIContentAccessModule::getParentCategories (
    in CategoryID category,
    out CategoryAndLevel categories )
```

#comment : Get the parent categories id and type (top level) from the a unique id.

2.24.2.7 getRootCategory()

```
void org::genivi::navigation::poiservice::POIContentAccessModule::getRootCategory (
    out CategoryID category )
```

#comment : Get the root category id. That would be ALL_CATEGORIES.

2.24.2.8 getSupportedLocales()

```
void org::genivi::navigation::poiservice::POIContentAccessModule::getSupportedLocales (
    out Locale localeList )
```

#comment : Get the supported set of locales for the search by poi provider module.

2.24.2.9 getVersion()

```
void org::genivi::navigation::poiservice::POIContentAccessModule::getVersion (
    out Version version )
```

#comment : This method returns the API version implemented by the content access module.

2.24.2.10 poiDetailsRequested()

```
void org::genivi::navigation::poiservice::POIContentAccessModule::poiDetailsRequested (
    in POI_ID source_id,
    out SearchResultDetails results )
```

#comment : This method retrieves the details associated to one or more POI. It contains the name, the parent categories, the list of attributes, the icons,

2.24.2.11 poiSearchCanceled()

```
void org::genivi::navigation::poiservice::POIContentAccessModule::poiSearchCanceled (
    in Handle poiSearchHandle )
```

#comment : This method cancels the search for the current id.

2.24.2.12 poiSearchStarted()

```
void org::genivi::navigation::poiservice::POIContentAccessModule::poiSearchStarted (
    in Handle poiSearchHandle,
    in UInt16 maxSize,
    in Coordinate3D location,
    in CategoryAndRadius poiCategories,
    in AttributeDetails poiAttributes,
    in String inputString,
    in SortOption sortOption )
```

#comment : This method is sent by the POI service component to inform all the CAM that a new POI search was started. It provides all the relevant search parameters. Of course the CAM will only be aware of the search if it registers one of the search categories.

2.24.2.13 removeCategories()

```
void org::genivi::navigation::poiservice::POIContentAccessModule::removeCategories (
    in CategoryID categories )
```

#comment : Removes a list of categories. Because of required time to remove it from the database, a signal is emitted when the deletion is done.

2.24.2.14 removePOIs()

```
void org::genivi::navigation::poiservice::POIContentAccessModule::removePOIs (
    in POI_ID ids )
```

#comment : Removes a list of POIs to a category. Because of required time to remove it from the database, a signal is emitted when the update is done.

2.24.2.15 resultListRequested()

```
void org::genivi::navigation::poiservice::POIContentAccessModule::resultListRequested (
    in ContentAccessModuleID camId,
    in Handle poiSearchHandle,
    in AttributeID attributeList,
    out SearchStatusState statusValue,
    out UInt16 resultListSize,
    out PoiCAMDetails resultList )
```

#comment : This method provides the poi results list found by the CAM. As the POI unique id is managed by the POI component, the CAM only provides the POI name, the category and coordinates as well as all the relevant detailed information.

2.24.2.16 setLocale()

```
void org::genivi::navigation::poiservice::POIContentAccessModule::setLocale (
    in String languageCode,
    in String countryCode,
    in String scriptCode )
```

#comment : Set the current language set for the search by poi provider module. The language defines the poi and categories name and details language. If the language is not supported, the default details will be returned in the native language.

The documentation for this interface was generated from the following file:

- [POIContentAccessModule.fidl](#)

2.25 org::genivi::navigation::poiservice::POIContentAccessModule_client Interface Reference

Public Member Functions

- void [configurationChanged](#) (in Settings changedSettings)
- void [categoriesRemoved](#) (in CategoryID categories)
- void [poiAdded](#) (in POI_ID pois)
- void [poiRemoved](#) (in POI_ID pois)
- void [searchStatusChanged](#) (in Handle poiSearchHandle, in SearchStatusState statusValue, in POI_ID pois)

2.25.1 Member Function Documentation

2.25.1.1 categoriesRemoved()

```
void org::genivi::navigation::poiservice::POIContentAccessModule_client::categoriesRemoved (
    in CategoryID categories )
```

broadcast #comment : categoriesRemoved = This signal is emitted when a list of categories and associated content has been removed from the database.

2.25.1.2 configurationChanged()

```
void org::genivi::navigation::poiservice::POIContentAccessModule_client::configurationChanged (
    in Settings changedSettings )
```

broadcast #comment : configurationChanged = This signal is sent to the clients when one or more configuration settings changes.

2.25.1.3 poiAdded()

```
void org::genivi::navigation::poiservice::POIContentAccessModule_client::poiAdded (
    in POI_ID pois )
```

broadcast #comment : poiAdded = This signal is emitted when a list of POIs and associated content has been added to the database. It returns the ids.

2.25.1.4 poiRemoved()

```
void org::genivi::navigation::poiservice::POIContentAccessModule_client::poiRemoved (
    in POI_ID pois )
```

broadcast #comment : poiRemoved = This signal is emitted when a list of POIs and associated content has been removed from the database.

2.25.1.5 searchStatusChanged()

```
void org::genivi::navigation::poiservice::POIContentAccessModule_client::searchStatusChanged (
    in Handle poiSearchHandle,
    in SearchStatusState statusValue,
    in POI_ID pois )
```

broadcast #comment : SearchStatusChanged = This signal updates the search or proximity alert status of the specified handle.

The documentation for this interface was generated from the following file:

- [POIContentAccessModule.fidl](#)

2.26 org::genivi::navigation::poiservice::POIServiceTypes::PoiDetails Struct Reference

Public Attributes

- [POI_ID id](#)
- [String name](#)
- [Coordinate3D location](#)

2.26.1 Member Data Documentation

2.26.1.1 id

`POI_ID` `org::genivi::navigation::poiservice::POIServiceTypes::PoiDetails::id`

2.26.1.2 location

`Coordinate3D` `org::genivi::navigation::poiservice::POIServiceTypes::PoiDetails::location`

2.26.1.3 name

`String` `org::genivi::navigation::poiservice::POIServiceTypes::PoiDetails::name`

The documentation for this struct was generated from the following file:

- [POIServiceTypes.fidl](#)

2.27 org::genivi::navigation::poiservice::POISearch Interface Reference

Public Member Functions

- void [getVersion](#) (out Version version)
- void [validateCategories](#) (in CategoryID categories, out CategoryAndStatus results)
- void [getAvailableCategories](#) (out CategoryAndName categories)
- void [getRootCategory](#) (out CategoryID category)
- void [getChildrenCategories](#) (in CategoryID category, out CategoryAndLevel categories)
- void [getParentCategories](#) (in CategoryID category, out CategoryAndLevel categories)
- void [getCategoriesWithStandardCategoryId](#) (in StandardCategory standardCategoryId, out CategoryID categories)
- void [getCategoriesDetails](#) (in CategoryID categories, out Category results)
- void [createPoiSearchHandle](#) (out Handle poiSearchHandle)
- void [deletePoiSearchHandle](#) (in Handle poiSearchHandle)
- void [setCenter](#) (in Handle poiSearchHandle, in Coordinate3D location)
- void [setRouteHandle](#) (in Handle poiSearchHandle, in Handle sessionHandle, in Handle routeHandle, in UInt32 startSearchOffset, in UInt32 endSearchOffset)
- void [setCategories](#) (in Handle poiSearchHandle, in CategoryAndRadius poiCategories)
- void [setAttributes](#) (in Handle poiSearchHandle, in AttributeDetails poiAttributes)
- void [startPoiSearch](#) (in Handle poiSearchHandle, in String inputString, in SortOption sortOption)
- void [cancelPoiSearch](#) (in Handle poiSearchHandle)
- void [startPoiProximityAlert](#) (in Handle poiSearchHandle, in String inputString, in SortOption sortOption)
- void [cancelPoiProximityAlert](#) (in Handle poiSearchHandle)
- void [requestResultList](#) (in Handle poiSearchHandle, in UInt16 offset, in UInt16 maxWindowSize, in AttributeID attributeList, out SearchStatusState statusValue, out UInt16 resultListSize, out SearchResult resultListWindow)
- void [getPoiDetails](#) (in POI_ID id, out SearchResultDetails results)

2.27.1 Detailed Description

#comment : This interface offers methods that implement the POI search functionality of a navigation system.

2.27.2 Member Function Documentation

2.27.2.1 cancelPoiProximityAlert()

```
void org::genivi::navigation::poiservice::POISearch::cancelPoiProximityAlert (
    in Handle poiSearchHandle )
```

#comment : This method cancels the search for the current session.

2.27.2.2 cancelPoiSearch()

```
void org::genivi::navigation::poiservice::POISearch::cancelPoiSearch (
    in Handle poiSearchHandle )
```

#comment : This method cancels the search for the current session.

2.27.2.3 createPoiSearchHandle()

```
void org::genivi::navigation::poiservice::POISearch::createPoiSearchHandle (
    out Handle poiSearchHandle )
```

#comment : This method creates a new search input and retrieves a handle .

2.27.2.4 deletePoiSearchHandle()

```
void org::genivi::navigation::poiservice::POISearch::deletePoiSearchHandle (
    in Handle poiSearchHandle )
```

#comment : This method deletes a search input and its associated resources.

2.27.2.5 getAvailableCategories()

```
void org::genivi::navigation::poiservice::POISearch::getAvailableCategories (
    out CategoryAndName categories )
```

#comment : This method retrieves the list of POI categories available (pre-defined and custom).

2.27.2.6 getCategoriesDetails()

```
void org::genivi::navigation::poiservice::POISearch::getCategoriesDetails (
    in CategoryID categories,
    out Category results )
```

#comment : This method retrieves the details associated to one or more POI categories. It contains the name, the parent categories, the top level attribute, the list of attributes, the icons,

2.27.2.7 `getCategoriesWithStandardCategoryId()`

```
void org::genivi::navigation::poiservice::POISearch::getCategoriesWithStandardCategoryId (
    in StandardCategory standardCategoryId,
    out CategoryID categories )
```

#comment : Get the categories that are marked with the given standard category.

2.27.2.8 `getChildrenCategories()`

```
void org::genivi::navigation::poiservice::POISearch::getChildrenCategories (
    in CategoryID category,
    out CategoryAndLevel categories )
```

#comment : Get the children categories id and type (top level) from the a parent unique id.

2.27.2.9 `getParentCategories()`

```
void org::genivi::navigation::poiservice::POISearch::getParentCategories (
    in CategoryID category,
    out CategoryAndLevel categories )
```

#comment : Get the parent categories id and type (top level) from the a unique id.

2.27.2.10 `getPoiDetails()`

```
void org::genivi::navigation::poiservice::POISearch::getPoiDetails (
    in POI_ID id,
    out SearchResultDetails results )
```

#comment : This method retrieves the details associated to one or more POI. It contains the name, the parent categories, the list of attributes, the icons,

2.27.2.11 `getRootCategory()`

```
void org::genivi::navigation::poiservice::POISearch::getRootCategory (
    out CategoryID category )
```

#comment : Get the root category id. That would be ALL_CATEGORIES.

2.27.2.12 `getVersion()`

```
void org::genivi::navigation::poiservice::POISearch::getVersion (
    out Version version )
```

#comment : This method returns the API version implemented by the content access module.

2.27.2.13 `requestResultList()`

```
void org::genivi::navigation::poiservice::POISearch::requestResultList (
    in Handle poiSearchHandle,
    in UInt16 offset,
    in UInt16 maxWindowSize,
    in AttributeID attributeList,
    out SearchStatusState statusValue,
    out UInt16 resultListSize,
    out SearchResult resultListWindow )
```

#comment : This method gets the poi result list (e.g. after a Search/Scroll call) .

2.27.2.14 setAttributes()

```
void org::genivi::navigation::poiservice::POISearch::setAttributes (
    in Handle poiSearchHandle,
    in AttributeDetails poiAttributes )
```

#comment : This method set POI attributes (optional) for the current search input and the corresponding result-lists for the current session An attribute is attached to a category.

2.27.2.15 setCategories()

```
void org::genivi::navigation::poiservice::POISearch::setCategories (
    in Handle poiSearchHandle,
    in CategoryAndRadius poiCategories )
```

#comment : This method sets the POI categories for the current search input and the corresponding result-lists for the current session .

2.27.2.16 setCenter()

```
void org::genivi::navigation::poiservice::POISearch::setCenter (
    in Handle poiSearchHandle,
    in Coordinate3D location )
```

#comment : This method sets the location to start the search around. If a route handle was defined before, it will be replaced by this location.

2.27.2.17 setRouteHandle()

```
void org::genivi::navigation::poiservice::POISearch::setRouteHandle (
    in Handle poiSearchHandle,
    in Handle sessionHandle,
    in Handle routeHandle,
    in UInt32 startSearchOffset,
    in UInt32 endSearchOffset )
```

#comment : This method allows to start a POI search along a guided route. The route handle must be valid or the POI search will failed. If a search location was defined before, it will be replaced by the route.

2.27.2.18 startPoiProximityAlert()

```
void org::genivi::navigation::poiservice::POISearch::startPoiProximityAlert (
    in Handle poiSearchHandle,
    in String inputString,
    in SortOption sortOption )
```

#comment : This method starts to check for POI around vehicle according to the criteria defined with the unique handle. By default, it will search for POI around vehicle position with default radius defined for each categories. If a route handle was defined, it will search along the route with default categorie's radius.

2.27.2.19 startPoiSearch()

```
void org::genivi::navigation::poiservice::POISearch::startPoiSearch (
    in Handle poiSearchHandle,
    in String inputString,
    in SortOption sortOption )
```

#comment : This method sends the search input for the search handle. The search will start with the either the location or the route handle. If no position or route handle were configured, the search will use the vehicle position as center location.

2.27.2.20 validateCategories()

```
void org::genivi::navigation::poiservice::POISearch::validateCategories (
    in CategoryID categories,
    out CategoryAndStatus results )
```

#comment : This method allows the application to validate that POI categories are supported by the POI component and the Content access modules.

The documentation for this interface was generated from the following file:

- [POISearch.fidl](#)

2.28 org::genivi::navigation::poiservice::POISearch_client Interface Reference

Public Member Functions

- void [categoriesUpdated](#) (in CategoryAndReason poiCategories)
- void [poiStatus](#) (in Handle poiSearchHandle, in SearchStatusState statusValue)
- void [resultListChanged](#) (in Handle poiSearchHandle, in UInt16 resultListSize)

2.28.1 Member Function Documentation

2.28.1.1 categoriesUpdated()

```
void org::genivi::navigation::poiservice::POISearch_client::categoriesUpdated (
    in CategoryAndReason poiCategories )
```

broadcast #comment : This signal indicates that one or more POI categories were added, updated or removed.

2.28.1.2 poiStatus()

```
void org::genivi::navigation::poiservice::POISearch_client::poiStatus (
    in Handle poiSearchHandle,
    in SearchStatusState statusValue )
```

broadcast #comment : This signal updates the search or proximity alert status of the specified handle.

2.28.1.3 resultListChanged()

```
void org::genivi::navigation::poiservice::POISearch_client::resultListChanged (
    in Handle poiSearchHandle,
    in UInt16 resultListSize )
```

broadcast #comment : This signal updates in the poi results list.

The documentation for this interface was generated from the following file:

- [POISearch.fidl](#)

2.29 org::genivi::navigation::poiservice::POIServiceTypes Interface Reference

Classes

- struct [AttributeDetails](#)
- union [AttributeValue](#)
- struct [CAMCategory](#)
- struct [CAMCategoryUpdate](#)
- struct [Category](#)
- struct [CategoryAndLevel](#)
- struct [CategoryAndName](#)
- struct [CategoryAndRadius](#)
- struct [CategoryAndReason](#)
- struct [CategoryAndStatus](#)
- struct [CategoryAttribute](#)
- struct [CategoryDetails](#)
- struct [CategorySortOption](#)
- struct [Details](#)
- union [Icon](#)
- union [Media](#)
- struct [Operator](#)
- struct [PoiAddedDetails](#)
- struct [PoiAttribute](#)
- struct [PoiCAMDetails](#)
- struct [PoiDetails](#)
- struct [SearchResult](#)
- struct [SearchResultDetails](#)

Public Types

- enum [CategoryIDSet](#) : BasicEnum {
[AIRPORT](#) = 1, [SPORTING](#) = 2, [FERRY_TERMINAL](#) = 3, [ENTERTAINMENT](#) = 4,
[HOTEL_MOTEL](#) = 5, [RESTAURANT](#) = 6, [PARKING](#) = 7, [FUEL_STATION](#) = 8,
[SERVICE_AREA](#) = 9, [CAR_REPAIR_SHOP](#) = 10, [CAR_DEALER](#) = 11, [CAR_RENTAL_AGENCY](#) = 12,
[MEDICAL](#) = 13, [SHOPPING](#) = 14, [BUSINESS_AREA](#) = 15, [LANDMARK](#) = 16,
[FLASH_RADAR](#) = 17, [POI_TRUCK](#) = 18, [SANCTUARY](#) = 19, [TOLLBOOTH](#) = 20,
[KIOSK](#) = 21, [WATER_CLOSET](#) = 22, [BANK_AND_FINANCIAL](#) = 23, [TRAVEL](#) = 24,
[TOURIST](#) = 25, [PUBLIC_BUILDING](#) = 26, [RAILWAY_STATION](#) = 27, [DESTINATION_FLAG](#) = 204,
[FAVORITE](#) = 205, [FAVORITE_HOME](#) = 206, [FAVORITE_ADDRESSBOOK](#) = 207, [USER_IMPORT](#) = 208,
[USER_CONTACT](#) = 209, [MOTORWAY_EXIT](#) = 210, [ALL_CATEGORIES](#) = 65535 }

- enum `StandardCategory` {
 - `NOT_STANDARD_CATEGORY`, `VEHICLE_REPAIR` = 1, `PETROL_STATION` = 2, `EVS_CHARGING_STATION` = 3,
 - `CONTROLLED_ACCESS_INTERSECTION` = 4, `CONTROLLED_ACCESS_ENTRY_EXIT` = 5, `CONTROLLED_ACCESS_SMART_IC` = 6, `RENT_A_CAR` = 7,
 - `CAR_WASH` = 8, `CAR_DEALERSHIP` = 9, `MOTOR_CYCLE_DEALERSHIP` = 10, `TRUCK_DEALERSHIP` = 11,
 - `PARKING_GARAGE` = 12, `OPEN_PARKING` = 13, `REST_AREA` = 14, `ROAD_ASSISTANCE` = 15,
 - `CAMPING` = 16, `CARAVAN_SITE` = 17, `COACH_AND_LORRY_PARKING` = 18, `MOTORING_ORG_OFFICE` = 19,
 - `CAR_SHIPPING_TERMINAL` = 20, `HOTEL_MOTEL` = 5, `RESTAURANT` = 6, `FAST_FOOD` = 23,
 - `COFFEE_SHOP` = 24, `BAR_OR_PUB` = 25, `CINEMA` = 26, `MUSEUM` = 27,
 - `THEATRE` = 28, `LIBRARY` = 29, `HOSPITAL` = 30, `PHYSICIAN` = 31,
 - `DENTIST` = 32, `PHARMACY` = 33, `VETERINARIAN_SERVICE` = 34, `POLICE_STATION` = 35,
 - `POST_OFFICE` = 36, `CITY_HALL` = 37, `EMBASSY` = 38, `COURT_HOUSE` = 39,
 - `GOVERNMENT_OFFICE` = 40, `COMMUNITY_CENTER` = 41, `SHOPPING_CENTER` = 42, `STORE` = 43,
 - `BANK` = 44, `ATM` = 45, `CURRENCY_EXCHANGE` = 46, `TOURIST_OFFICE` = 47,
 - `TRAVEL_AGENCY` = 48, `TOURIST_ATTRACTION` = 49, `HISTORICAL_MONUMENT` = 50, `NATIONAL_PARK` = 51,
 - `CITY_CENTER` = 52, `HAMLET` = 53, `ZOO` = 54, `AMUSEMENT_PARK` = 55,
 - `GOING_OUT` = 56, `STADIUM` = 57, `SPORTS_CENTER` = 58, `RECREATION` = 59,
 - `SKI_RESORT` = 60, `SWIMMING_POOL` = 61, `GOLF_COURSE` = 62, `FERRY_TERMINAL` = 3,
 - `MARINA` = 64, `HARBOUR` = 65, `BUSINESS_FACILITY` = 66, `EXHIBITION_CONFERENCE_CENTER` = 67,
 - `RAILWAY_STATION` = 27, `PUBLIC_TRANSIT_STOP` = 69, `PARK_AND_RIDE` = 70, `AIRPORT` = 1,
 - `AIRLINE_ACCESS` = 72, `TAXI_STAND` = 73, `EMERGENCY_CALL_STATION` = 74, `EMERGENCY_MEDICAL_SERVICE` = 75,
 - `FIRST_AID_POST` = 76, `FIRE_BRIGADE` = 77, `PLACE_OF_WORSHIP` = 78, `EDUCATION` = 79,
 - `CUSTOMS` = 80, `FRONTIER_CROSSING` = 81, `TOLL_LOCATION` = 82, `PUBLIC_RESTROOM` = 83,
 - `PUBLIC_PHONE` = 84, `KINDERGARTEN` = 85, `MOUNTAIN_PASS_SUMMIT` = 86, `SPEED_CAMERA` = 87
- enum `AttributeType` { `STRING` = 500, `INTEGER` = 501, `COORDINATES` = 502, `BOOLEAN` = 503 }
- enum `SearchStatusState` : `BasicEnum` { `NOT_STARTED` = 510, `SEARCHING` = 511, `FINISHED` = 512 }
- enum `OperatorType` : `BasicEnum` { `MORE_THAN` = 520, `LESS_THAN` = 521, `EQUAL` = 522 }
- enum `SortOption` { `SORT_DEFAULT` = 560, `SORT_BY_DISTANCE` = 561, `SORT_BY_TIME` = 562, `ATTRIBUTE_CUSTOM` = 563 }
- enum `RouteStatus` { `OFF_ROUTE` = 600, `ON_ROUTE` = 601, `INSIDE_CORRIDOR` = 602 }
- enum `UpdateReason` {
 - `ADDED` = 700, `REMOVED` = 701, `ATTR_ADDED` = 702, `ATTR_MODIFIED` = 703,
 - `ATTR_REMOVED` = 704 }
- enum `ConfigurationChangedReason` { `LOCALES` }
- enum `Settings` {
 - `INVALID` = 0, `UNITS_OF_MEASUREMENT` = 48, `LOCALE` = 37, `TIME_FORMAT` = 3,
 - `COORDINATES_FORMAT` = 6 }
- typedef `UInt64` `POI_ID`
- typedef `UInt32` `ResourceID`
- typedef `UInt32` `AttributeID`
- typedef `UInt8` `ContentAccessModuleID`

2.29.1 Member Typedef Documentation

2.29.1.1 AttributeID

```
typedef UInt32 org::genivi::navigation::poiservice::POIServiceTypes::AttributeID
```

2.29.1.2 ContentAccessModuleID

```
typedef UInt8 org::genivi::navigation::poiservice::POIServiceTypes::ContentAccessModuleID
```

2.29.1.3 POI_ID

```
typedef UInt64 org::genivi::navigation::poiservice::POIServiceTypes::POI_ID
```

2.29.1.4 ResourceID

```
typedef UInt32 org::genivi::navigation::poiservice::POIServiceTypes::ResourceID
```

2.29.2 Member Enumeration Documentation

2.29.2.1 AttributeType

```
enum org::genivi::navigation::poiservice::POIServiceTypes::AttributeType
```

Enumerator

STRING	
INTEGER	
COORDINATES	
BOOLEAN	

2.29.2.2 CategoryIDSet

```
enum org::genivi::navigation::poiservice::POIServiceTypes::CategoryIDSet : BasicEnum
```

Enumerator

AIRPORT	
SPORTING	
FERRY_TERMINAL	
ENTERTAINMENT	
HOTEL_MOTEL	
RESTAURANT	
PARKING	
FUEL_STATION	
SERVICE_AREA	
CAR_REPAIR_SHOP	
CAR_DEALER	

Enumerator

CAR_RENTAL_AGENCY	
MEDICAL	
SHOPPING	
BUSINESS_AREA	
LANDMARK	
FLASH_RADAR	
POI_TRUCK	
SANCTUARY	
TOLLBOOTH	
KIOSK	
WATER_CLOSET	
BANK_AND_FINANCIAL	
TRAVEL	
TOURIST	
PUBLIC_BUILDING	
RAILWAY_STATION	
DESTINATION_FLAG	
FAVORITE	
FAVORITE_HOME	
FAVORITE_ADDRESSBOOK	
USER_IMPORT	
USER_CONTACT	
MOTORWAY_EXIT	
ALL_CATEGORIES	

2.29.2.3 ConfigurationChangedReason

```
enum org::genivi::navigation::poiservice::POIServiceTypes::ConfigurationChangedReason
```

Enumerator

LOCALES	
---------	--

2.29.2.4 OperatorType

```
enum org::genivi::navigation::poiservice::POIServiceTypes::OperatorType : BasicEnum
```

Enumerator

MORE_THAN	
LESS_THAN	
EQUAL	

2.29.2.5 RouteStatus

enum `org::genivi::navigation::poiservice::POIServiceTypes::RouteStatus`

Enumerator

OFF_ROUTE	
ON_ROUTE	
INSIDE_CORRIDOR	

2.29.2.6 SearchStatusState

enum `org::genivi::navigation::poiservice::POIServiceTypes::SearchStatusState` : BasicEnum

Enumerator

NOT_STARTED	
SEARCHING	
FINISHED	

2.29.2.7 Settings

enum `org::genivi::navigation::poiservice::POIServiceTypes::Settings`

Enumerator

INVALID	
UNITS_OF_MEASUREMENT	
LOCALE	
TIME_FORMAT	
COORDINATES_FORMAT	

2.29.2.8 SortOption

enum `org::genivi::navigation::poiservice::POIServiceTypes::SortOption`

Enumerator

SORT_DEFAULT	
SORT_BY_DISTANCE	
SORT_BY_TIME	
ATTRIBUTE_CUSTOM	

2.29.2.9 StandardCategory

```
enum org::genivi::navigation::poiservice::POIServiceTypes::StandardCategory
```

Enumerator

NOT_STANDARD_CATEGORY	
VEHICLE_REPAIR	
PETROL_STATION	
EVS_CHARGING_STATION	
CONTROLLED_ACCESS_INTERSECTION	
CONTROLLED_ACCESS_ENTRY_EXIT	
CONTROLLED_ACCESS_SMART_IC	
RENT_A_CAR	
CAR_WASH	
CAR_DEALERSHIP	
MOTOR_CYCLE_DEALERSHIP	
TRUCK_DEALERSHIP	
PARKING_GARAGE	
OPEN_PARKING	
REST_AREA	
ROAD_ASSISTANCE	
CAMPING	
CARAVAN_SITE	
COACH_AND_LORRY_PARKING	
MOTORING_ORG_OFFICE	
CAR_SHIPPING_TERMINAL	
HOTEL_MOTEL	
RESTAURANT	
FAST_FOOD	
COFFEE_SHOP	
BAR_OR_PUB	
CINEMA	
MUSEUM	
THEATRE	
LIBRARY	
HOSPITAL	
PHYSICIAN	
DENTIST	
PHARMACY	
VETERINARIAN_SERVICE	
POLICE_STATION	
POST_OFFICE	
CITY_HALL	
EMBASSY	
COURT_HOUSE	
GOVERNMENT_OFFICE	
COMMUNITY_CENTER	
SHOPPING_CENTER	
STORE	

Enumerator

BANK	
ATM	
CURRENCY_EXCHANGE	
TOURIST_OFFICE	
TRAVEL_AGENCY	
TOURIST_ATTRACTION	
HISTORICAL_MONUMENT	
NATIONAL_PARK	
CITY_CENTER	
HAMLET	
ZOO	
AMUSEMENT_PARK	
GOING_OUT	
STADIUM	
SPORTS_CENTER	
RECREATION	
SKI_RESORT	
SWIMMING_POOL	
GOLF_COURSE	
FERRY_TERMINAL	
MARINA	
HARBOUR	
BUSINESS_FACILITY	
EXHIBITION_CONFERENCE_CENTER	
RAILWAY_STATION	
PUBLIC_TRANSIT_STOP	
PARK_AND_RIDE	
AIRPORT	
AIRLINE_ACCESS	
TAXI_STAND	
EMERGENCY_CALL_STATION	
EMERGENCY_MEDICAL_SERVICE	
FIRST_AID_POST	
FIRE_BRIGADE	
PLACE_OF_WORSHIP	
EDUCATION	
CUSTOMS	
FRONTIER_CROSSING	
TOLL_LOCATION	
PUBLIC_RESTROOM	
PUBLIC_PHONE	
KINDERGARTEN	
MOUNTAIN_PASS_SUMMIT	
SPEED_CAMERA	

2.29.2.10 UpdateReason

```
enum org::genivi::navigation::poiservice::POIServiceTypes::UpdateReason
```

Enumerator

ADDED	
REMOVED	
ATTR_ADDED	
ATTR_MODIFIED	
ATTR_REMOVED	

The documentation for this interface was generated from the following file:

- [POIServiceTypes.fidl](#)

2.30 org::genivi::navigation::poiservice::POIServiceTypes::SearchResult Struct Reference

Public Attributes

- [POI_ID](#) id
- [UInt32](#) distance
- [RouteStatus](#) routeStatus
- [PoiAttribute](#) [] attributeList

2.30.1 Member Data Documentation

2.30.1.1 attributeList

[PoiAttribute](#) [] org::genivi::navigation::poiservice::POIServiceTypes::SearchResult::attribute↔
List

2.30.1.2 distance

[UInt32](#) org::genivi::navigation::poiservice::POIServiceTypes::SearchResult::distance

2.30.1.3 id

[POI_ID](#) org::genivi::navigation::poiservice::POIServiceTypes::SearchResult::id

2.30.1.4 routeStatus

[RouteStatus](#) org::genivi::navigation::poiservice::POIServiceTypes::SearchResult::routeStatus

The documentation for this struct was generated from the following file:

- [POIServiceTypes.fidl](#)

2.31 org::genivi::navigation::poiservice::POIServiceTypes::SearchResultDetails Struct Reference

Public Attributes

- [PoiDetails details](#)
- CategoryID [] [categories](#)
- PoiAttribute [] [attributeList](#)

2.31.1 Member Data Documentation

2.31.1.1 attributeList

[PoiAttribute](#) [] org::genivi::navigation::poiservice::POIServiceTypes::SearchResultDetails↔
::attributeList

2.31.1.2 categories

CategoryID [] org::genivi::navigation::poiservice::POIServiceTypes::SearchResultDetails↔
::categories

2.31.1.3 details

[PoiDetails](#) org::genivi::navigation::poiservice::POIServiceTypes::SearchResultDetails::details

The documentation for this struct was generated from the following file:

- [POIServiceTypes.fidl](#)

3 File Documentation

3.1 POIConfiguration.fidl File Reference

Classes

- interface [org::genivi::navigation::poiservice::POIConfiguration](#)
- interface [org::genivi::navigation::poiservice::POIConfiguration_client](#)

Modules

- module [org::genivi::navigation::poiservice](#)

3.2 POIContentAccess.fidl File Reference

Classes

- interface [org::genivi::navigation::poiservice::POIContentAccess](#)

Modules

- module [org::genivi::navigation::poiservice](#)

3.3 POIContentAccessModule.fidl File Reference

Classes

- interface [org::genivi::navigation::poiservice::POIContentAccessModule](#)
- interface [org::genivi::navigation::poiservice::POIContentAccessModule_client](#)

Modules

- module [org::genivi::navigation::poiservice](#)

3.4 POISearch.fidl File Reference

Classes

- interface [org::genivi::navigation::poiservice::POISearch](#)
- interface [org::genivi::navigation::poiservice::POISearch_client](#)

Modules

- module [org::genivi::navigation::poiservice](#)

3.5 POIServiceTypes.fidl File Reference

Classes

- interface [org::genivi::navigation::poiservice::POIServiceTypes](#)
- union [org::genivi::navigation::poiservice::POIServiceTypes::Icon](#)
- union [org::genivi::navigation::poiservice::POIServiceTypes::Media](#)
- union [org::genivi::navigation::poiservice::POIServiceTypes::AttributeValue](#)
- struct [org::genivi::navigation::poiservice::POIServiceTypes::Details](#)
- struct [org::genivi::navigation::poiservice::POIServiceTypes::Operator](#)
- struct [org::genivi::navigation::poiservice::POIServiceTypes::CategoryAttribute](#)
- struct [org::genivi::navigation::poiservice::POIServiceTypes::CategorySortOption](#)
- struct [org::genivi::navigation::poiservice::POIServiceTypes::CAMCategory](#)
- struct [org::genivi::navigation::poiservice::POIServiceTypes::CAMCategoryUpdate](#)
- struct [org::genivi::navigation::poiservice::POIServiceTypes::PoiAttribute](#)
- struct [org::genivi::navigation::poiservice::POIServiceTypes::CategoryAndRadius](#)

- struct [org::genivi::navigation::poiservice::POIServiceTypes::PoiDetails](#)
- struct [org::genivi::navigation::poiservice::POIServiceTypes::SearchResultDetails](#)
- struct [org::genivi::navigation::poiservice::POIServiceTypes::SearchResult](#)
- struct [org::genivi::navigation::poiservice::POIServiceTypes::PoiCAMDetails](#)
- struct [org::genivi::navigation::poiservice::POIServiceTypes::AttributeDetails](#)
- struct [org::genivi::navigation::poiservice::POIServiceTypes::CategoryDetails](#)
- struct [org::genivi::navigation::poiservice::POIServiceTypes::Category](#)
- struct [org::genivi::navigation::poiservice::POIServiceTypes::CategoryAndLevel](#)
- struct [org::genivi::navigation::poiservice::POIServiceTypes::CategoryAndName](#)
- struct [org::genivi::navigation::poiservice::POIServiceTypes::CategoryAndReason](#)
- struct [org::genivi::navigation::poiservice::POIServiceTypes::CategoryAndStatus](#)
- struct [org::genivi::navigation::poiservice::POIServiceTypes::PoiAddedDetails](#)

Modules

- module [org::genivi::navigation::poiservice](#)

Index

- addCategories
 - org::genivi::navigation::poiservice::POIContent↔
Access, [22](#)
- addPOIs
 - org::genivi::navigation::poiservice::POIContent↔
AccessModule, [23](#)
- AttributeID
 - org::genivi::navigation::poiservice::POIService↔
Types, [34](#)
- attributeList
 - org::genivi::navigation::poiservice::POIService↔
Types::CAMCategory, [4](#)
 - org::genivi::navigation::poiservice::POIService↔
Types::CAMCategoryUpdate, [5](#)
 - org::genivi::navigation::poiservice::POIService↔
Types::Category, [5](#)
 - org::genivi::navigation::poiservice::POIService↔
Types::PoiAddedDetails, [14](#)
 - org::genivi::navigation::poiservice::POIService↔
Types::PoiCAMDetails, [16](#)
 - org::genivi::navigation::poiservice::POIService↔
Types::SearchResult, [40](#)
 - org::genivi::navigation::poiservice::POIService↔
Types::SearchResultDetails, [41](#)
- AttributeType
 - org::genivi::navigation::poiservice::POIService↔
Types, [35](#)
- boolValue
 - org::genivi::navigation::poiservice::POIService↔
Types::AttributeValue, [3](#)
- cancelPoiProximityAlert
 - org::genivi::navigation::poiservice::POISearch, [29](#)
- cancelPoiSearch
 - org::genivi::navigation::poiservice::POISearch, [29](#)
- categories
 - org::genivi::navigation::poiservice::POIService↔
Types::SearchResultDetails, [41](#)
- categoriesRemoved
 - org::genivi::navigation::poiservice::POIContent↔
AccessModule_client, [26](#)
- categoriesUpdated
 - org::genivi::navigation::poiservice::POISearch↔
client, [32](#)
- category
 - org::genivi::navigation::poiservice::POIService↔
Types::PoiCAMDetails, [16](#)
- CategoryIDSet
 - org::genivi::navigation::poiservice::POIService↔
Types, [35](#)
- categoryId
 - org::genivi::navigation::poiservice::POIService↔
Types::AttributeDetails, [2](#)
- configurationChanged
 - org::genivi::navigation::poiservice::POIConfiguration↔
_client, [21](#)
 - org::genivi::navigation::poiservice::POIContent↔
AccessModule_client, [27](#)
- ConfigurationChangedReason
 - org::genivi::navigation::poiservice::POIService↔
Types, [36](#)
- ContentAccessModuleID
 - org::genivi::navigation::poiservice::POIService↔
Types, [34](#)
- CoordinatesFormat
 - org::genivi::navigation::poiservice::POIConfiguration,
[17](#)
- createCategory
 - org::genivi::navigation::poiservice::POIContent↔
AccessModule, [24](#)
- createPoiSearchHandle
 - org::genivi::navigation::poiservice::POISearch, [29](#)
- deletePoiSearchHandle
 - org::genivi::navigation::poiservice::POISearch, [29](#)
- description
 - org::genivi::navigation::poiservice::POIService↔
Types::CategoryDetails, [10](#)
- details
 - org::genivi::navigation::poiservice::POIService↔
Types::CAMCategory, [4](#)
 - org::genivi::navigation::poiservice::POIService↔
Types::Category, [6](#)
 - org::genivi::navigation::poiservice::POIService↔
Types::SearchResultDetails, [41](#)
- distance
 - org::genivi::navigation::poiservice::POIService↔
Types::PoiCAMDetails, [16](#)
 - org::genivi::navigation::poiservice::POIService↔
Types::SearchResult, [40](#)
- getAvailableCategories
 - org::genivi::navigation::poiservice::POIContent↔
AccessModule, [24](#)
 - org::genivi::navigation::poiservice::POISearch, [29](#)
- getCategoriesDetails
 - org::genivi::navigation::poiservice::POISearch, [29](#)
- getCategoriesWithStandardCategoryId
 - org::genivi::navigation::poiservice::POISearch, [29](#)
- getChildrenCategories
 - org::genivi::navigation::poiservice::POIContent↔
AccessModule, [24](#)
 - org::genivi::navigation::poiservice::POISearch, [30](#)
- getCoordinatesFormat
 - org::genivi::navigation::poiservice::POIConfiguration,
[19](#)
- getLocale
 - org::genivi::navigation::poiservice::POIConfiguration,
[19](#)

- org::genivi::navigation::poiservice::POIContent↔
AccessModule, 24
- getParentCategories
 - org::genivi::navigation::poiservice::POIContent↔
AccessModule, 24
 - org::genivi::navigation::poiservice::POISearch, 30
- getPoiDetails
 - org::genivi::navigation::poiservice::POISearch, 30
- getRootCategory
 - org::genivi::navigation::poiservice::POIContent↔
AccessModule, 24
 - org::genivi::navigation::poiservice::POISearch, 30
- getSupportedCoordinatesFormat
 - org::genivi::navigation::poiservice::POIConfiguration,
19
- getSupportedLocales
 - org::genivi::navigation::poiservice::POIConfiguration,
19
 - org::genivi::navigation::poiservice::POIContent↔
AccessModule, 24
- getSupportedTimeFormats
 - org::genivi::navigation::poiservice::POIConfiguration,
19
- getSupportedUnitsOfMeasurement
 - org::genivi::navigation::poiservice::POIConfiguration,
19
- getTimeFormat
 - org::genivi::navigation::poiservice::POIConfiguration,
19
- getUnitsOfMeasurement
 - org::genivi::navigation::poiservice::POIConfiguration,
19
- getVersion
 - org::genivi::navigation::poiservice::POIConfiguration,
20
 - org::genivi::navigation::poiservice::POIContent↔
AccessModule, 25
 - org::genivi::navigation::poiservice::POISearch, 30
- icons
 - org::genivi::navigation::poiservice::POIService↔
Types::CategoryDetails, 10
 - org::genivi::navigation::poiservice::POIService↔
Types::Details, 12
- id
 - org::genivi::navigation::poiservice::POIService↔
Types::AttributeDetails, 2
 - org::genivi::navigation::poiservice::POIService↔
Types::CAMCategoryUpdate, 5
 - org::genivi::navigation::poiservice::POIService↔
Types::CategoryAndRadius, 7
 - org::genivi::navigation::poiservice::POIService↔
Types::CategoryAttribute, 9
 - org::genivi::navigation::poiservice::POIService↔
Types::CategorySortOption, 11
 - org::genivi::navigation::poiservice::POIService↔
Types::Icon, 13
 - org::genivi::navigation::poiservice::POIService↔
Types::Media, 13
 - org::genivi::navigation::poiservice::POIService↔
Types::PoiAttribute, 15
 - org::genivi::navigation::poiservice::POIService↔
Types::PoiDetails, 28
 - org::genivi::navigation::poiservice::POIService↔
Types::SearchResult, 40
 - intValue
 - org::genivi::navigation::poiservice::POIService↔
Types::AttributeValue, 3
 - location
 - org::genivi::navigation::poiservice::POIService↔
Types::PoiAddedDetails, 14
 - org::genivi::navigation::poiservice::POIService↔
Types::PoiCAMDetails, 16
 - org::genivi::navigation::poiservice::POIService↔
Types::PoiDetails, 28
 - mandatory
 - org::genivi::navigation::poiservice::POIService↔
Types::AttributeDetails, 3
 - media
 - org::genivi::navigation::poiservice::POIService↔
Types::CategoryDetails, 10
 - org::genivi::navigation::poiservice::POIService↔
Types::Details, 12
 - name
 - org::genivi::navigation::poiservice::POIService↔
Types::CategoryAndName, 7
 - org::genivi::navigation::poiservice::POIService↔
Types::CategoryAttribute, 9
 - org::genivi::navigation::poiservice::POIService↔
Types::CategoryDetails, 10
 - org::genivi::navigation::poiservice::POIService↔
Types::CategorySortOption, 11
 - org::genivi::navigation::poiservice::POIService↔
Types::Details, 12
 - org::genivi::navigation::poiservice::POIService↔
Types::Operator, 14
 - org::genivi::navigation::poiservice::POIService↔
Types::PoiAddedDetails, 14
 - org::genivi::navigation::poiservice::POIService↔
Types::PoiCAMDetails, 16
 - org::genivi::navigation::poiservice::POIService↔
Types::PoiDetails, 28
 - oper
 - org::genivi::navigation::poiservice::POIService↔
Types::AttributeDetails, 3
 - OperatorType
 - org::genivi::navigation::poiservice::POIService↔
Types, 36
 - operators
 - org::genivi::navigation::poiservice::POIService↔
Types::CategoryAttribute, 9
 - org, 1
 - org::genivi, 2
 - org::genivi::navigation, 2

- org::genivi::navigation::poiservice, 2
- org::genivi::navigation::poiservice::POIConfiguration, 16
 - CoordinatesFormat, 17
 - getCoordinatesFormat, 19
 - getLocale, 19
 - getSupportedCoordinatesFormat, 19
 - getSupportedLocales, 19
 - getSupportedTimeFormats, 19
 - getSupportedUnitsOfMeasurement, 19
 - getTimeFormat, 19
 - getUnitsOfMeasurement, 19
 - getVersion, 20
 - setCoordinatesFormat, 20
 - setLocale, 20
 - setTimeFormat, 20
 - setUnitsOfMeasurement, 20
 - TimeFormat, 18
 - Units, 18
 - UnitsOfMeasurementAttribute, 18, 20, 21
 - UnitsOfMeasurementListValue, 17
 - UnitsOfMeasurementValue, 18
- org::genivi::navigation::poiservice::POIConfiguration_↔
 - client, 21
 - configurationChanged, 21
- org::genivi::navigation::poiservice::POIContentAccess, 21
 - addCategories, 22
 - registerContentAccessModule, 22
 - registerPoiCategories, 22
 - removeCategories, 22
 - unRegisterContentAccessModule, 22
 - updateCategories, 22
- org::genivi::navigation::poiservice::POIContent↔
 - AccessModule, 23
 - addPOIs, 23
 - createCategory, 24
 - getAvailableCategories, 24
 - getChildrenCategories, 24
 - getLocale, 24
 - getParentCategories, 24
 - getRootCategory, 24
 - getSupportedLocales, 24
 - getVersion, 25
 - poiDetailsRequested, 25
 - poiSearchCanceled, 25
 - poiSearchStarted, 25
 - removeCategories, 25
 - removePOIs, 25
 - resultListRequested, 26
 - setLocale, 26
- org::genivi::navigation::poiservice::POIContent↔
 - AccessModule_client, 26
 - categoriesRemoved, 26
 - configurationChanged, 27
 - poiAdded, 27
 - poiRemoved, 27
 - searchStatusChanged, 27
- org::genivi::navigation::poiservice::POISearch, 28
 - cancelPoiProximityAlert, 29
 - cancelPoiSearch, 29
 - createPoiSearchHandle, 29
 - deletePoiSearchHandle, 29
 - getAvailableCategories, 29
 - getCategoriesDetails, 29
 - getCategoriesWithStandardCategoryId, 29
 - getChildrenCategories, 30
 - getParentCategories, 30
 - getPoiDetails, 30
 - getRootCategory, 30
 - getVersion, 30
 - requestResultList, 30
 - setAttributes, 30
 - setCategories, 31
 - setCenter, 31
 - setRouteHandle, 31
 - startPoiProximityAlert, 31
 - startPoiSearch, 31
 - validateCategories, 32
- org::genivi::navigation::poiservice::POISearch_client, 32
 - categoriesUpdated, 32
 - poiStatus, 32
 - resultListChanged, 32
- org::genivi::navigation::poiservice::POIServiceTypes, 33
 - AttributeID, 34
 - AttributeType, 35
 - CategoryIDSet, 35
 - ConfigurationChangedReason, 36
 - ContentAccessModuleID, 34
 - OperatorType, 36
 - POI_ID, 35
 - ResourceID, 35
 - RouteStatus, 36
 - SearchStatusState, 37
 - Settings, 37
 - SortOption, 37
 - StandardCategory, 38
 - UpdateReason, 39
- org::genivi::navigation::poiservice::POIServiceTypes::↔
 - AttributeDetails, 2
 - categoryId, 2
 - id, 2
 - mandatory, 3
 - oper, 3
 - type, 3
 - value, 3
- org::genivi::navigation::poiservice::POIServiceTypes::↔
 - AttributeValue, 3
 - boolValue, 3
 - intValue, 3
 - stringValue, 4
- org::genivi::navigation::poiservice::POIServiceTypes::↔
 - CAMCategory, 4
 - attributeList, 4
 - details, 4
 - sortOptions, 4

- org::genivi::navigation::poiservice::POIServiceTypes::↔
 - CAMCategoryUpdate, 5
 - attributeList, 5
 - id, 5
 - sortOptions, 5
- org::genivi::navigation::poiservice::POIServiceTypes::↔
 - Category, 5
 - attributeList, 5
 - details, 6
 - sortOptions, 6
- org::genivi::navigation::poiservice::POIServiceTypes::↔
 - CategoryAndLevel, 6
 - topLevel, 6
 - uniqueId, 6
- org::genivi::navigation::poiservice::POIServiceTypes::↔
 - CategoryAndName, 7
 - name, 7
 - topLevel, 7
 - uniqueId, 7
- org::genivi::navigation::poiservice::POIServiceTypes::↔
 - CategoryAndRadius, 7
 - id, 7
 - radius, 7
- org::genivi::navigation::poiservice::POIServiceTypes::↔
 - CategoryAndReason, 8
 - reason, 8
 - unique_id, 8
- org::genivi::navigation::poiservice::POIServiceTypes::↔
 - CategoryAndStatus, 8
 - status, 8
 - uniqueId, 8
- org::genivi::navigation::poiservice::POIServiceTypes::↔
 - CategoryAttribute, 9
 - id, 9
 - name, 9
 - operators, 9
 - type, 9
- org::genivi::navigation::poiservice::POIServiceTypes::↔
 - CategoryDetails, 10
 - description, 10
 - icons, 10
 - media, 10
 - name, 10
 - parentsId, 10
 - standardCategoryId, 10
 - topLevel, 11
 - uniqueId, 11
- org::genivi::navigation::poiservice::POIServiceTypes::↔
 - CategorySortOption, 11
 - id, 11
 - name, 11
- org::genivi::navigation::poiservice::POIServiceTypes::↔
 - Details, 12
 - icons, 12
 - media, 12
 - name, 12
 - parentsId, 12
 - shortDesc, 12
- org::genivi::navigation::poiservice::POIServiceTypes::↔
 - Icon, 12
 - id, 13
 - url, 13
- org::genivi::navigation::poiservice::POIServiceTypes::↔
 - Media, 13
 - id, 13
 - url, 13
- org::genivi::navigation::poiservice::POIServiceTypes::↔
 - Operator, 13
 - name, 14
 - type, 14
 - value, 14
- org::genivi::navigation::poiservice::POIServiceTypes::↔
 - PoiAddedDetails, 14
 - attributeList, 14
 - location, 14
 - name, 14
- org::genivi::navigation::poiservice::POIServiceTypes::↔
 - PoiAttribute, 15
 - id, 15
 - type, 15
 - value, 15
- org::genivi::navigation::poiservice::POIServiceTypes::↔
 - PoiCAMDetails, 15
 - attributeList, 16
 - category, 16
 - distance, 16
 - location, 16
 - name, 16
 - sourceId, 16
- org::genivi::navigation::poiservice::POIServiceTypes::↔
 - PoiDetails, 27
 - id, 28
 - location, 28
 - name, 28
- org::genivi::navigation::poiservice::POIServiceTypes::↔
 - SearchResult, 40
 - attributeList, 40
 - distance, 40
 - id, 40
 - routeStatus, 40
- org::genivi::navigation::poiservice::POIServiceTypes::↔
 - SearchResultDetails, 41
 - attributeList, 41
 - categories, 41
 - details, 41
- POI_ID
 - org::genivi::navigation::poiservice::POIService↔
 - Types, 35
 - POIConfiguration.fidl, 41
 - POIContentAccess.fidl, 42
 - POIContentAccessModule.fidl, 42
 - POISearch.fidl, 42
 - POIServiceTypes.fidl, 42
 - parentsId
 - org::genivi::navigation::poiservice::POIService↔
 - Types::CategoryDetails, 10

- org::genivi::navigation::poiservice::POIService↔
Types::Details, 12
- poiAdded
 - org::genivi::navigation::poiservice::POIContent↔
AccessModule_client, 27
- poiDetailsRequested
 - org::genivi::navigation::poiservice::POIContent↔
AccessModule, 25
- poiRemoved
 - org::genivi::navigation::poiservice::POIContent↔
AccessModule_client, 27
- poiSearchCanceled
 - org::genivi::navigation::poiservice::POIContent↔
AccessModule, 25
- poiSearchStarted
 - org::genivi::navigation::poiservice::POIContent↔
AccessModule, 25
- poiStatus
 - org::genivi::navigation::poiservice::POISearch_↔
client, 32
- radius
 - org::genivi::navigation::poiservice::POIService↔
Types::CategoryAndRadius, 7
- reason
 - org::genivi::navigation::poiservice::POIService↔
Types::CategoryAndReason, 8
- registerContentAccessModule
 - org::genivi::navigation::poiservice::POIContent↔
Access, 22
- registerPoiCategories
 - org::genivi::navigation::poiservice::POIContent↔
Access, 22
- removeCategories
 - org::genivi::navigation::poiservice::POIContent↔
Access, 22
 - org::genivi::navigation::poiservice::POIContent↔
AccessModule, 25
- removePOIs
 - org::genivi::navigation::poiservice::POIContent↔
AccessModule, 25
- requestResultList
 - org::genivi::navigation::poiservice::POISearch, 30
- ResourceID
 - org::genivi::navigation::poiservice::POIService↔
Types, 35
- resultListChanged
 - org::genivi::navigation::poiservice::POISearch_↔
client, 32
- resultListRequested
 - org::genivi::navigation::poiservice::POIContent↔
AccessModule, 26
- RouteStatus
 - org::genivi::navigation::poiservice::POIService↔
Types, 36
- routeStatus
 - org::genivi::navigation::poiservice::POIService↔
Types::SearchResult, 40
- searchStatusChanged
 - org::genivi::navigation::poiservice::POIContent↔
AccessModule_client, 27
- SearchStatusState
 - org::genivi::navigation::poiservice::POIService↔
Types, 37
- setAttributes
 - org::genivi::navigation::poiservice::POISearch, 30
- setCategories
 - org::genivi::navigation::poiservice::POISearch, 31
- setCenter
 - org::genivi::navigation::poiservice::POISearch, 31
- setCoordinatesFormat
 - org::genivi::navigation::poiservice::POIConfiguration,
20
- setLocale
 - org::genivi::navigation::poiservice::POIConfiguration,
20
 - org::genivi::navigation::poiservice::POIContent↔
AccessModule, 26
- setRouteHandle
 - org::genivi::navigation::poiservice::POISearch, 31
- setTimeFormat
 - org::genivi::navigation::poiservice::POIConfiguration,
20
- setUnitsOfMeasurement
 - org::genivi::navigation::poiservice::POIConfiguration,
20
- Settings
 - org::genivi::navigation::poiservice::POIService↔
Types, 37
- shortDesc
 - org::genivi::navigation::poiservice::POIService↔
Types::Details, 12
- SortOption
 - org::genivi::navigation::poiservice::POIService↔
Types, 37
- sortOptions
 - org::genivi::navigation::poiservice::POIService↔
Types::CAMCategory, 4
 - org::genivi::navigation::poiservice::POIService↔
Types::CAMCategoryUpdate, 5
 - org::genivi::navigation::poiservice::POIService↔
Types::Category, 6
- sourceId
 - org::genivi::navigation::poiservice::POIService↔
Types::PoiCAMDetails, 16
- StandardCategory
 - org::genivi::navigation::poiservice::POIService↔
Types, 38
- standardCategoryId
 - org::genivi::navigation::poiservice::POIService↔
Types::CategoryDetails, 10
- startPoiProximityAlert
 - org::genivi::navigation::poiservice::POISearch, 31
- startPoiSearch
 - org::genivi::navigation::poiservice::POISearch, 31
- status

- org::genivi::navigation::poiservice::POIService↔
Types::CategoryAndStatus, 8
- stringValue
 - org::genivi::navigation::poiservice::POIService↔
Types::AttributeValue, 4
- TimeFormat
 - org::genivi::navigation::poiservice::POIConfiguration,
18
- topLevel
 - org::genivi::navigation::poiservice::POIService↔
Types::CategoryAndLevel, 6
 - org::genivi::navigation::poiservice::POIService↔
Types::CategoryAndName, 7
 - org::genivi::navigation::poiservice::POIService↔
Types::CategoryDetails, 11
- type
 - org::genivi::navigation::poiservice::POIService↔
Types::AttributeDetails, 3
 - org::genivi::navigation::poiservice::POIService↔
Types::CategoryAttribute, 9
 - org::genivi::navigation::poiservice::POIService↔
Types::Operator, 14
 - org::genivi::navigation::poiservice::POIService↔
Types::PoiAttribute, 15
- unRegisterContentAccessModule
 - org::genivi::navigation::poiservice::POIContent↔
Access, 22
- unique_id
 - org::genivi::navigation::poiservice::POIService↔
Types::CategoryAndReason, 8
- uniqueId
 - org::genivi::navigation::poiservice::POIService↔
Types::CategoryAndLevel, 6
 - org::genivi::navigation::poiservice::POIService↔
Types::CategoryAndName, 7
 - org::genivi::navigation::poiservice::POIService↔
Types::CategoryAndStatus, 8
 - org::genivi::navigation::poiservice::POIService↔
Types::CategoryDetails, 11
- Units
 - org::genivi::navigation::poiservice::POIConfiguration,
18
- UnitsOfMeasurementAttribute
 - org::genivi::navigation::poiservice::POIConfiguration,
18, 20, 21
- UnitsOfMeasurementListValue
 - org::genivi::navigation::poiservice::POIConfiguration,
17
- UnitsOfMeasurementValue
 - org::genivi::navigation::poiservice::POIConfiguration,
18
- updateCategories
 - org::genivi::navigation::poiservice::POIContent↔
Access, 22
- UpdateReason
 - org::genivi::navigation::poiservice::POIService↔
Types, 39
- url
 - org::genivi::navigation::poiservice::POIService↔
Types::Icon, 13
 - org::genivi::navigation::poiservice::POIService↔
Types::Media, 13
- validateCategories
 - org::genivi::navigation::poiservice::POISearch, 32
- value
 - org::genivi::navigation::poiservice::POIService↔
Types::AttributeDetails, 3
 - org::genivi::navigation::poiservice::POIService↔
Types::Operator, 14
 - org::genivi::navigation::poiservice::POIService↔
Types::PoiAttribute, 15